



Chipsmall Limited consists of a professional team with an average of over 10 year of expertise in the distribution of electronic components. Based in Hongkong, we have already established firm and mutual-benefit business relationships with customers from,Europe,America and south Asia,supplying obsolete and hard-to-find components to meet their specific needs.

With the principle of “Quality Parts,Customers Priority,Honest Operation,and Considerate Service”,our business mainly focus on the distribution of electronic components. Line cards we deal with include Microchip,ALPS,ROHM,Xilinx,Pulse,ON,Everlight and Freescale. Main products comprise IC,Modules,Potentiometer,IC Socket,Relay,Connector.Our parts cover such applications as commercial,industrial, and automotives areas.

We are looking forward to setting up business relationship with you and hope to provide you with the best service and solution. Let us make a better world for our industry!



Contact us

Tel: +86-755-8981 8866 Fax: +86-755-8427 6832

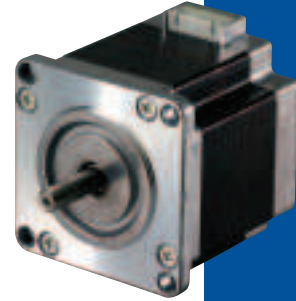
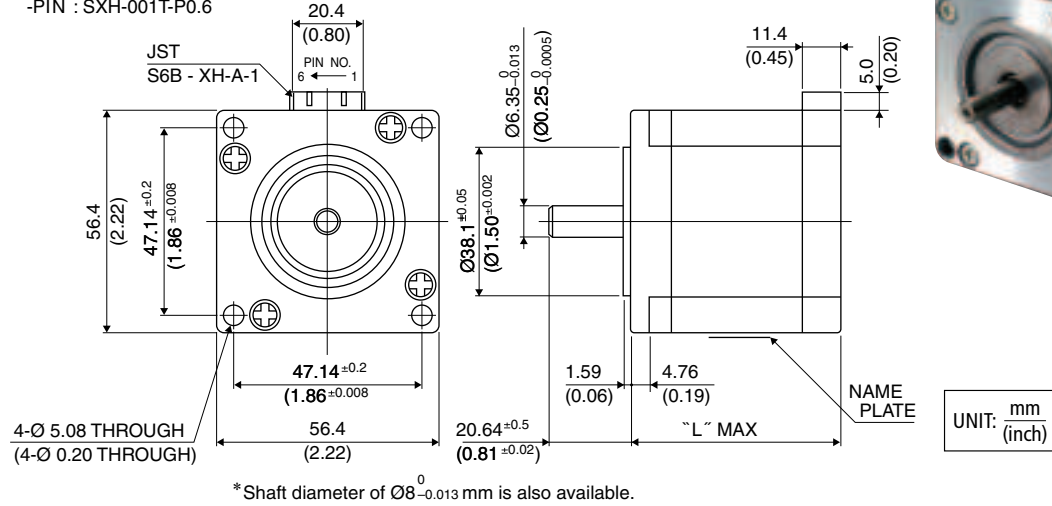
Email & Skype: info@chipsmall.com Web: www.chipsmall.com

Address: A1208, Overseas Decoration Building, #122 Zhenhua RD., Futian, Shenzhen, China



Outline

- LEAD WIRE SIDE
- HSG: XHP-6
- PIN : SXH-001T-P0.6



Hybrid

	"L"
23KY-K2**	42 (1.65)
23KY-K0**	54 (2.13)
23KY-K7**	76 (2.99)

PIN NO. vs. PHASE

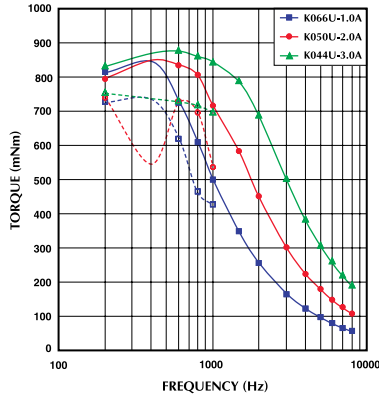
PHASE	A	A COM	\bar{A}	B	B COM	\bar{B}
PIN NO.	1	2	3	4	5	6

Specifications

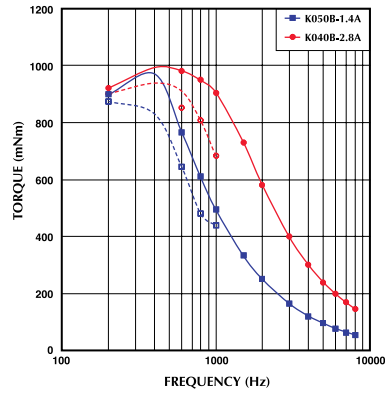
Model	Step Angle	Drive Sequence	Rated Current	Resistance	Holding Torque	Inductance	Rotor Inertia	Detent Torque	Mass
	(deg)		(A)	(Ohms)	(mNm)	(mH)	(g·cm ²)	(mNm)	(g)
23KY-K066U	0.9	UNI-POLAR	1.0	7.00	890	19.0	300	43	680
23KY-K050U	0.9	UNI-POLAR	2.0	1.80	890	5.6	200	43	680
23KY-K044U	0.9	UNI-POLAR	3.0	0.90	890	2.4	300	43	680
23KY-K267U	0.9	UNI-POLAR	1.0	6.30	470	10.0	120	22	470
23KY-K251U	0.9	UNI-POLAR	1.8	1.60	470	3.2	120	22	470
23KY-K244U	0.9	UNI-POLAR	3.0	0.70	470	1.1	120	22	470
23KY-K762U	0.9	UNI-POLAR	1.0	8.60	1250	23.0	360	50	1050
23KY-K748U	0.9	UNI-POLAR	2.0	2.30	1250	6.5	360	50	1050
23KY-K743U	0.9	UNI-POLAR	3.0	1.10	1250	2.9	360	50	1050
23KY-K050B	0.9	BI-POLAR	1.4	3.60	1050	20.0	300	43	680
23KY-K040B	0.9	BI-POLAR	2.8	0.90	1050	3.8	300	43	680
23KY-K251B	0.9	BI-POLAR	1.4	3.00	580	11.0	120	22	470
23KY-K241B	0.9	BI-POLAR	2.8	0.80	580	2.4	120	22	470
23KY-K748B	0.9	BI-POLAR	1.4	4.50	1580	24.0	480	50	1050
23KY-K740B	0.9	BI-POLAR	2.8	1.35	1580	5.7	480	50	1050

Torque/Speed Characteristics

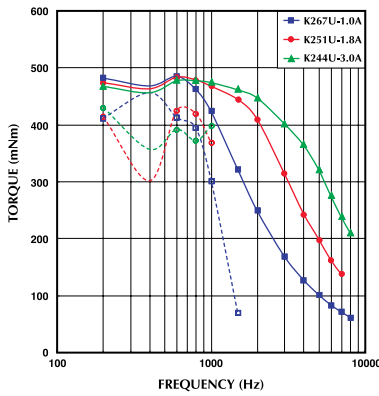
Model No: 23KY-K0xxU
Driver: Chopper Dual
Supply Voltage: 24.0 (Volt)



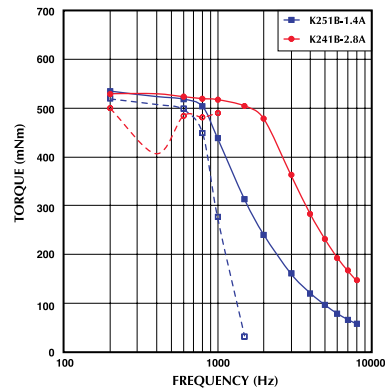
Model No: 23KY-K0xxB
Driver: Chopper Dual
Supply Voltage: 24.0 (Volt)



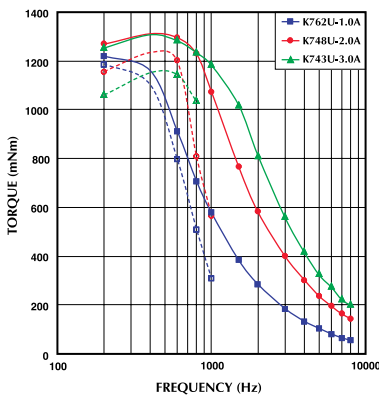
Model No: 23KY-K2xxU
Driver: Chopper Dual
Supply Voltage: 24.0 (Volt)



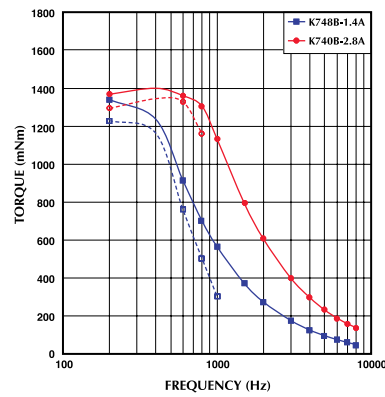
Model No: 23KY-K2xxB
Driver: Chopper Dual
Supply Voltage: 24.0 (Volt)



Model No: 23KY-K7xxU
Driver: Chopper Dual
Supply Voltage: 24.0 (Volt)



Model No: 23KY-K7xxB
Driver: Chopper Dual
Supply Voltage: 24.0 (Volt)



— : PULL OUT
- - - : PULL IN