



Chipsmall Limited consists of a professional team with an average of over 10 year of expertise in the distribution of electronic components. Based in Hongkong, we have already established firm and mutual-benefit business relationships with customers from,Europe,America and south Asia,supplying obsolete and hard-to-find components to meet their specific needs.

With the principle of “Quality Parts,Customers Priority,Honest Operation,and Considerate Service”,our business mainly focus on the distribution of electronic components. Line cards we deal with include Microchip,ALPS,ROHM,Xilinx,Pulse,ON,Everlight and Freescale. Main products comprise IC,Modules,Potentiometer,IC Socket,Relay,Connector.Our parts cover such applications as commercial,industrial, and automotives areas.

We are looking forward to setting up business relationship with you and hope to provide you with the best service and solution. Let us make a better world for our industry!



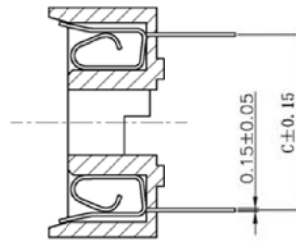
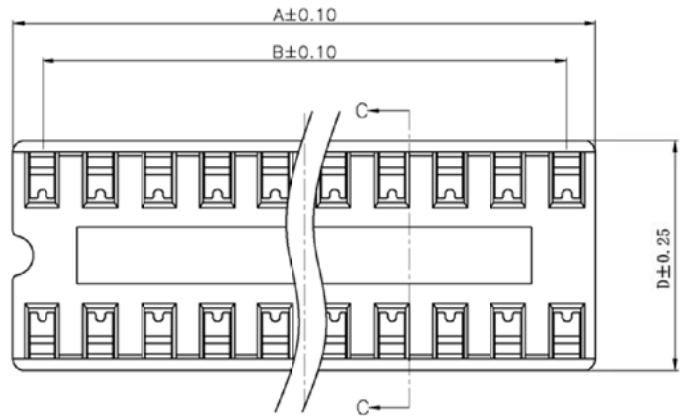
## Contact us

Tel: +86-755-8981 8866 Fax: +86-755-8427 6832

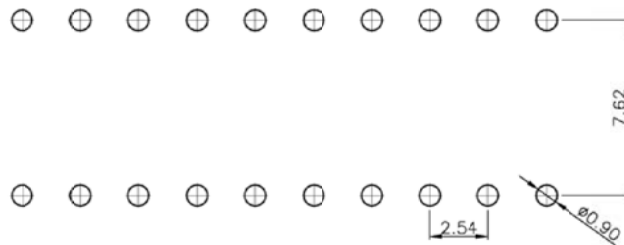
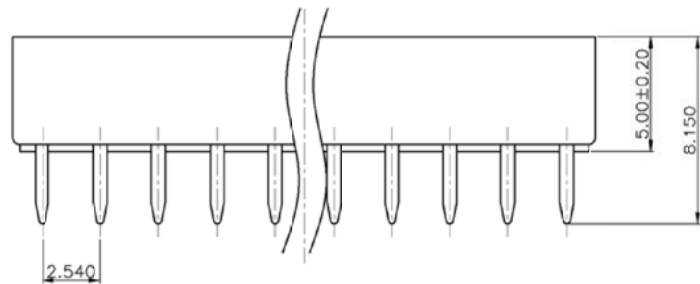
Email & Skype: info@chipsmall.com Web: www.chipsmall.com

Address: A1208, Overseas Decoration Building, #122 Zhenhua RD., Futian, Shenzhen, China





SECTION: C-C



PCB LAYOUT

NOTES:  
 MATERIAL:  
 CONTACTS:PHOSPHOR BRONZE  
 INSULATOR:PBT+30% GLASS UL 94V-0  
 ELECTRICAL:  
 CONTACT CURRENT RATNG:1A  
 DIELECTRIC WITHSTANDING VOLTAGE: 1000V AC  
 CONTACT RESISTANCE: 20milliohms max  
 INSULATION RESISTANCE: 1000 MEGOHMS  
 CAPACITANCE:0.5PICO-FARAD MAXIMUM  
 TEMPERATURE RANGE:-40°C+105°C  
 MECHANICAL:  
 ENGAGING FORCE:340g/A CONTACT MAX.  
 SEPARATING FORCE:20g/A CONTACT MIN.  
 DURABILITY:50 CYCLES  
 NO.OF CONTACT:6-48  
 FINISH:  
 CONTACT PLATING:TIN PLATED 60.03U"-88.35U"

PIN NO.	DIM A	DIM B	DIM C	DIM D
24	30.48	27.94	15.24	17.78
28	35.56	33.02	15.24	17.78
32	40.64	38.1	15.24	17.78
40	50.8	48.26	15.24	17.78
48	60.69	58.42	15.24	17.78

2011/06/21	XIE		NEW DWG		AC
DATE	DR.BY	ECN.NO.	DESCRIPTION	MARK	VER.
-TOLERANCES- UNLESS OTHERWISE SPECIFIED			<b>CnC Tech,LLC</b> <b>Industrial Cable and Connector Technology</b>		
				TITLE: IC SOCKET PH:2.54 FULL GOLD PLATED	
X.X	±0.30	X.X*	±3.00*	APPD:	PRODUCT NO: 241-XX-1-06
X.XX	±0.25	X.XX*	±1.00*	CHECK:	DATE SCALE UNIT TYPE PAGE
X.XXX	±0.100	X.XXX*	±0.500*	DRAW:	2011/06/21 1:1 mm Z 1/1