



Chipsmall Limited consists of a professional team with an average of over 10 year of expertise in the distribution of electronic components. Based in Hongkong, we have already established firm and mutual-benefit business relationships with customers from,Europe,America and south Asia,supplying obsolete and hard-to-find components to meet their specific needs.

With the principle of “Quality Parts,Customers Priority,Honest Operation,and Considerate Service”,our business mainly focus on the distribution of electronic components. Line cards we deal with include Microchip,ALPS,ROHM,Xilinx,Pulse,ON,Everlight and Freescale. Main products comprise IC,Modules,Potentiometer,IC Socket,Relay,Connector.Our parts cover such applications as commercial,industrial, and automotives areas.

We are looking forward to setting up business relationship with you and hope to provide you with the best service and solution. Let us make a better world for our industry!



## Contact us

Tel: +86-755-8981 8866 Fax: +86-755-8427 6832

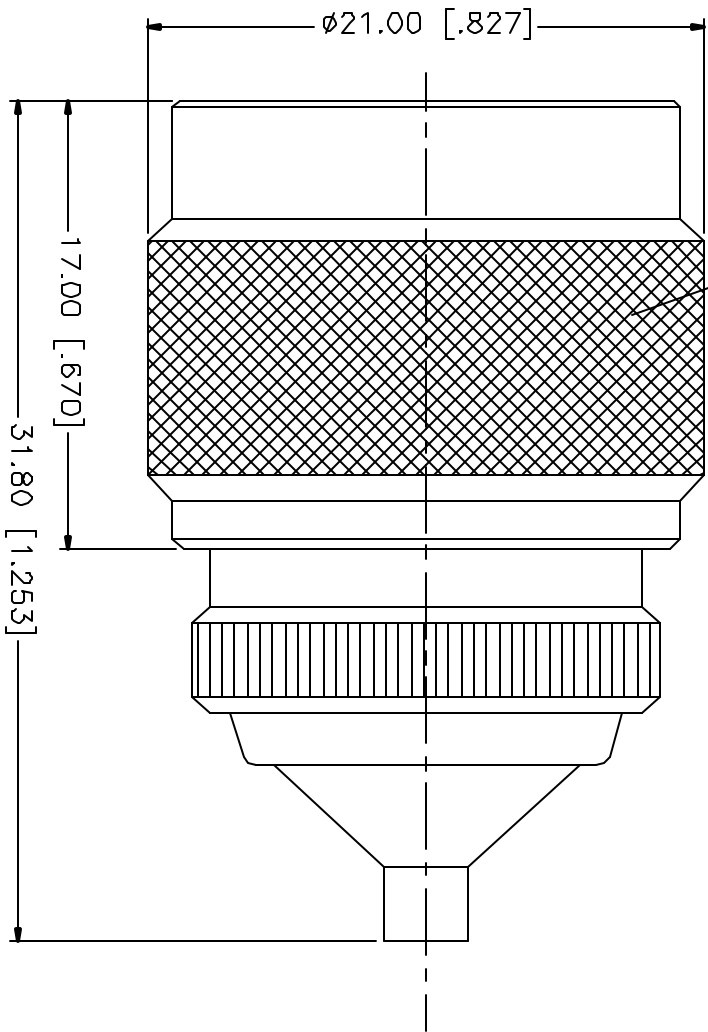
Email & Skype: info@chipsmall.com Web: www.chipsmall.com

Address: A1208, Overseas Decoration Building, #122 Zhenhua RD., Futian, Shenzhen, China

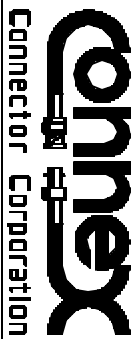


REV.	DATE	DESCRIPTION
NC	10/31/01	INITIAL RELEASE

5/8-24UNEF-2B (INTERNAL)



DESCRIPTION	MATERIAL	FINISH	UNLESS OTHERWISE SPECIFIED DIMENSIONS ARE IN MILLIMETERS FOR CUSTOMER REFERENCE ONLY	APPROVALS	DATE	TITLE	SIZE	FROM NO.	DWG. NO.	REV.		
1 BODY	BRASS	NICKEL	DIMENSIONS IN [ ] ARE IN INCHES	DRAWN	10/31/01	N PLUG TO MCX JACK ADAPTOR	A	99001	242170	NC		
2 INSULATOR	TEFLON	NATURAL	FOR CUSTOMER REFERENCE ONLY	CHECKED								
3 CONTACT PIN	BER. COPPER	GOLD	UNLESS OTHERWISE SPECIFIED TOLERANCES FOR MILLIMETERS ARE:	ISSUED								
4 GASKET	SILICONE	RED	0.5-6 = ± 0.2									
5			6-30 = ± 0.4									
6			30-120 = ± 0.6									
7			120-315 = ± 1									
8			315-1000 = ± 1.6									
			1000-2000 = ± 2.4									
DO NOT SCALE DRAWING							SCALE	NA	PART NO.	242170	SHEET	1 OF 1



Connector Corporation