



Chipsmall Limited consists of a professional team with an average of over 10 year of expertise in the distribution of electronic components. Based in Hongkong, we have already established firm and mutual-benefit business relationships with customers from,Europe,America and south Asia,supplying obsolete and hard-to-find components to meet their specific needs.

With the principle of “Quality Parts,Customers Priority,Honest Operation,and Considerate Service”,our business mainly focus on the distribution of electronic components. Line cards we deal with include Microchip,ALPS,ROHM,Xilinx,Pulse,ON,Everlight and Freescale. Main products comprise IC,Modules,Potentiometer,IC Socket,Relay,Connector.Our parts cover such applications as commercial,industrial, and automotives areas.

We are looking forward to setting up business relationship with you and hope to provide you with the best service and solution. Let us make a better world for our industry!



Contact us

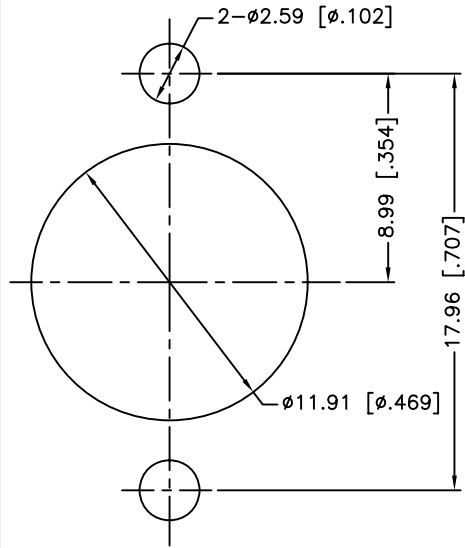
Tel: +86-755-8981 8866 Fax: +86-755-8427 6832

Email & Skype: info@chipsmall.com Web: www.chipsmall.com

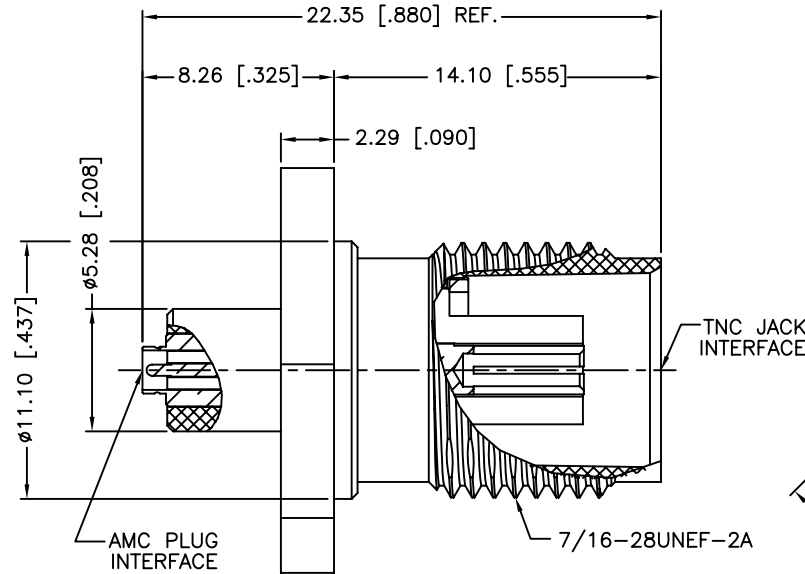
Address: A1208, Overseas Decoration Building, #122 Zhenhua RD., Futian, Shenzhen, China



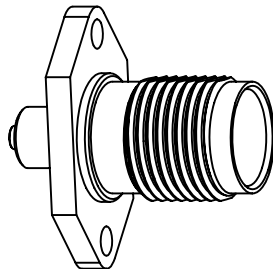
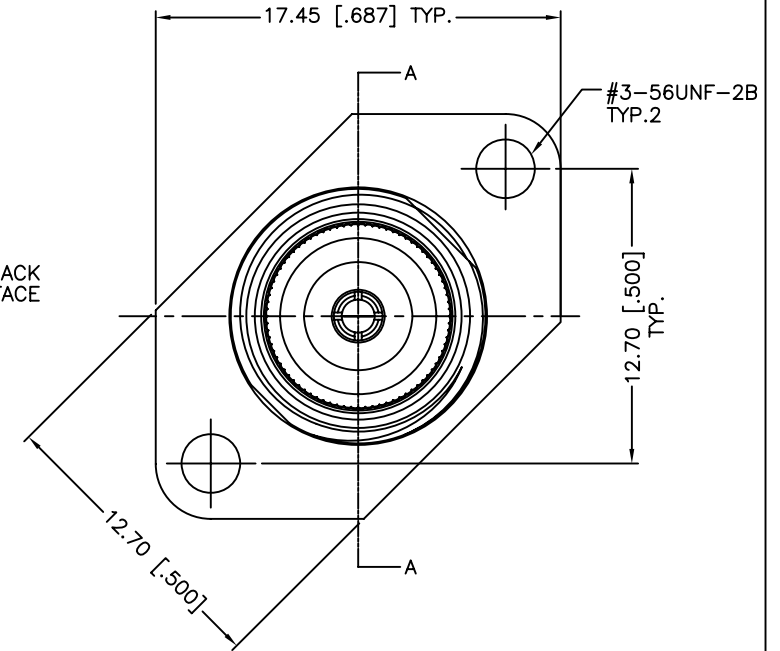
REV.	DATE	ECR NO.	DESCRIPTION
NC	04/01/11	XXXXXX	INITIAL RELEASE
A	05/11/11	2173	CHANGE THE BODY TO DIE-CAST PART



RECOMMENDED MOUNTING HOLE



SECTION A-A



- FREQUENCY RANGE: DC - 6 GHz
- VSWR(RETURN LOSS): 1.20(-20.8db)DC TO 3.0 GHz
1.30(-17.9db)3.0 TO 6.0 GHz
- DURABILITY: TNC, 500 CYCLES MIN.
AMC, 30 CYCLES MIN.
- TEMPERATURE RANGE: 40°C TO 90°C

QTY	DESCRIPTION	MATERIAL	FINISH
1	CONTACT PIN	PHOSPHOR BRONZE	GOLD
1	RETAINING RING	BRASS	NICKEL
1	INSULATOR	PTFE	NATURAL
1	BODY	ZINC DIECAST	NICKEL

UNLESS OTHERWISE SPECIFIED DIMENSIONS ARE IN MILLIMETERS. DIMENSIONS IN [] ARE IN INCHES AND FOR CUSTOMER REFERENCE ONLY.

UNLESS OTHERWISE SPECIFIED TOLERANCES FOR MILLIMETERS ARE:
0.5 - 8mm ± 0.20mm
8 - 30mm ± 0.40mm
30 - 120mm ± 0.50mm

UNLESS OTHERWISE SPECIFIED TOLERANCES FOR INCHES ARE:
.020 - .315 = ± 0.007"
.315 - 1.180 = ± 0.015"
1.180 - 4.724 = ± 0.020"

DO NOT SCALE DRAWING

APPROVALS	DATE
DRAWN M.ZHANG	05/11/11
CHECKED	
ISSUED	
SHEET 1 OF 1	
CAD FILE	C:/CONNEX/242251.DWG

Amphenol Connex			
PART DESCRIPTION AMC PLUG TO TNC JACK PANEL ADAPTER (FOR 50 OHM)			
PART NO. 242251			
DWG. NO.	242251.DWG	REV.	A
SIZE	A	SCALE	NA