



Chipsmall Limited consists of a professional team with an average of over 10 year of expertise in the distribution of electronic components. Based in Hongkong, we have already established firm and mutual-benefit business relationships with customers from,Europe,America and south Asia,supplying obsolete and hard-to-find components to meet their specific needs.

With the principle of “Quality Parts,Customers Priority,Honest Operation,and Considerate Service”,our business mainly focus on the distribution of electronic components. Line cards we deal with include Microchip,ALPS,ROHM,Xilinx,Pulse,ON,Everlight and Freescale. Main products comprise IC,Modules,Potentiometer,IC Socket,Relay,Connector.Our parts cover such applications as commercial,industrial, and automotives areas.

We are looking forward to setting up business relationship with you and hope to provide you with the best service and solution. Let us make a better world for our industry!



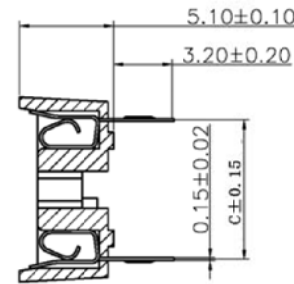
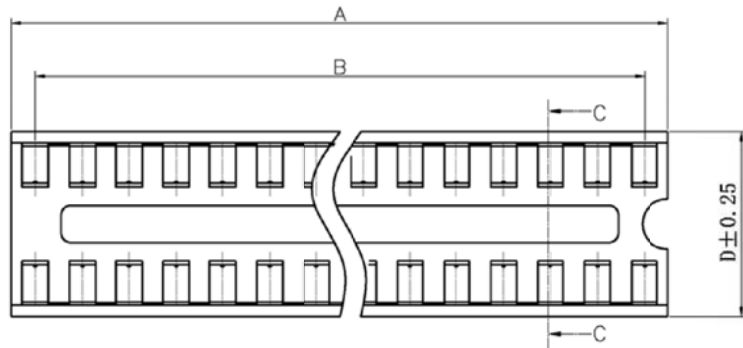
Contact us

Tel: +86-755-8981 8866 Fax: +86-755-8427 6832

Email & Skype: info@chipsmall.com Web: www.chipsmall.com

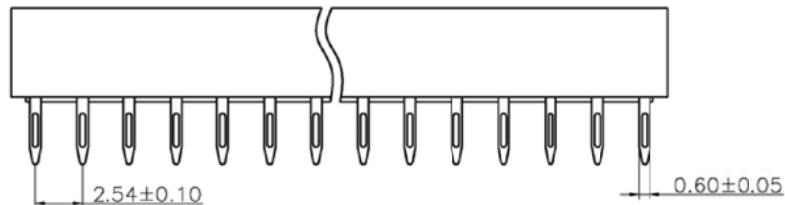
Address: A1208, Overseas Decoration Building, #122 Zhenhua RD., Futian, Shenzhen, China



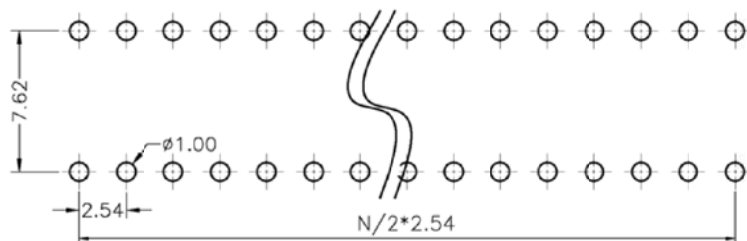


SECTION C-C

NOTE:
 MATERIAL
 INSULATION MATERIAL: PBT+GF.
 CONTACT MATERIAL: PHOSPHOR BRONZE
 CONTACT PLATED: Tin 100u" Min.
 MAIN SPECIFICATIONS
 CONTACT CURRENT RATING: 1A
 WITHSTANDING VOLTAGE: AC 1000V 5s.
 INSULATION RESISTANCE: 1000MΩ 500V DC.
 OPERATING TEMPERATURE: -55°C ~ 105°C.



PIN NO.	DIM A	DIM B	DIM C	DIM D
24	30.48	27.94	15.24	17.78
28	35.56	33.02	15.24	17.78
32	40.64	38.1	15.24	17.78
40	50.8	48.26	15.24	17.78
48	60.69	58.42	15.24	17.78



RECOMMENDED P.C.B LAYOUT

10/05/07	ING		NEW DWG		A0
DATE	DR.BY	ECN.NO.	DESCRIPTION	MARK	VER.
-TOLERANCES- UNLESS OTHERWISE SPECIFIED			CnC Tech, LLC Industrial Cable and Connector Technology		
				TITLE: IC SOCKET PH:2.54mm DIP180 TIN PLATED	
X.X	±0.30	X.X*	±5.0°	APPD:	PRODUCT NO: 243-XX-1-06
X.XX	±0.20	X.XX*	±3.0°	CHECK:	DATE SCALE UNIT TYPE PAGE
X.XXX	±0.10	X.XXX*	±1.0°	DRAW:	2010.05.07 1:1 mm Z 1/1