



Chipsmall Limited consists of a professional team with an average of over 10 year of expertise in the distribution of electronic components. Based in Hongkong, we have already established firm and mutual-benefit business relationships with customers from,Europe,America and south Asia,supplying obsolete and hard-to-find components to meet their specific needs.

With the principle of “Quality Parts,Customers Priority,Honest Operation,and Considerate Service”,our business mainly focus on the distribution of electronic components. Line cards we deal with include Microchip,ALPS,ROHM,Xilinx,Pulse,ON,Everlight and Freescale. Main products comprise IC,Modules,Potentiometer,IC Socket,Relay,Connector.Our parts cover such applications as commercial,industrial, and automotives areas.

We are looking forward to setting up business relationship with you and hope to provide you with the best service and solution. Let us make a better world for our industry!



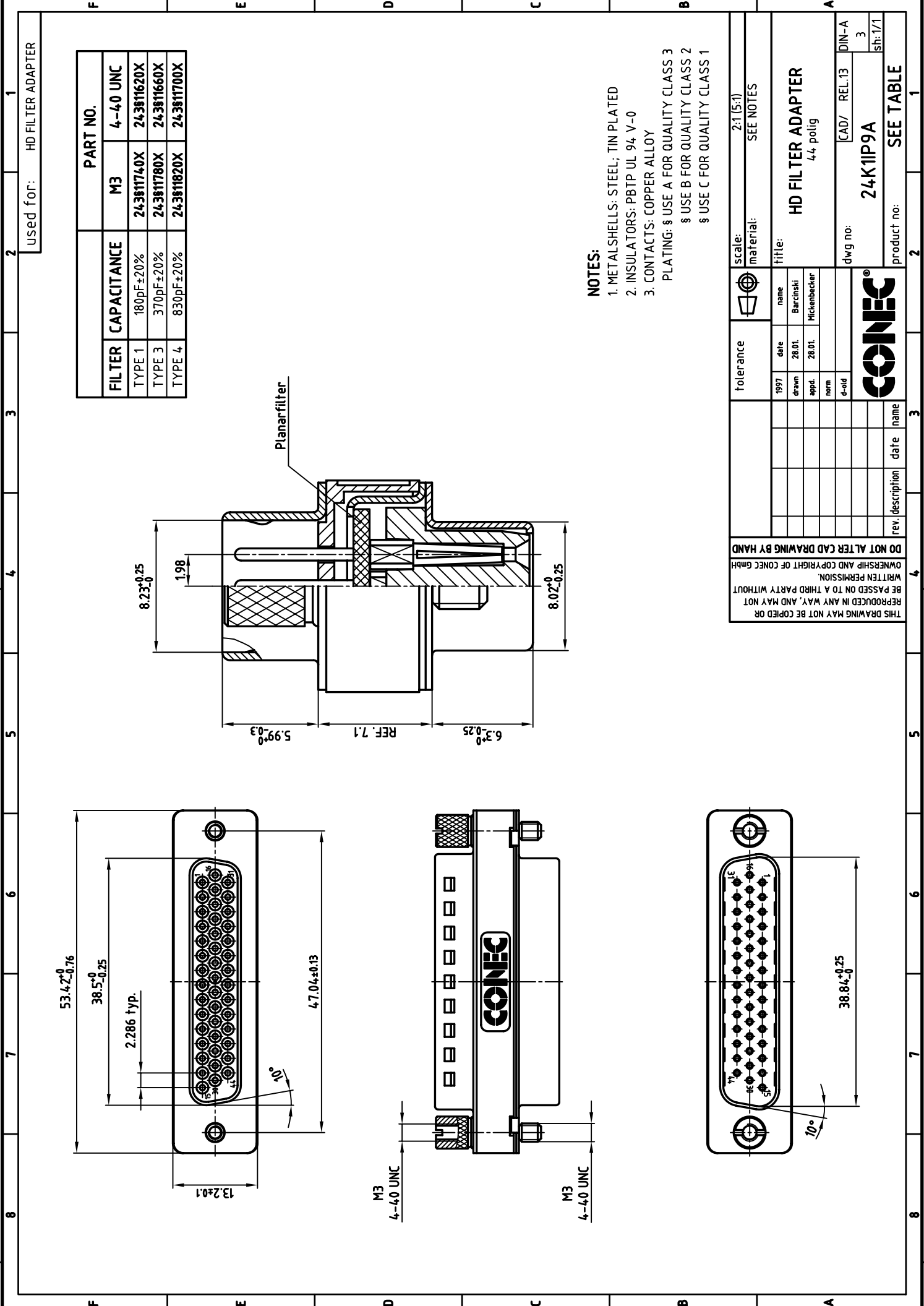
Contact us

Tel: +86-755-8981 8866 Fax: +86-755-8427 6832

Email & Skype: info@chipsmall.com Web: www.chipsmall.com

Address: A1208, Overseas Decoration Building, #122 Zhenhua RD., Futian, Shenzhen, China





FILTER	CAPACITANCE	M3	PART NO.
TYPE 1	$180\text{pF} \pm 20\%$	24.3811740X	4-40 UNC
TYPE 3	$370\text{pF} \pm 20\%$	24.3811780X	24.3811620X
TYPE 4	$830\text{pF} \pm 20\%$	24.3811820X	24.3811660X
			24.3811700X

used for: HD FILTER ADAPTER

NOTES:
 1. METALSHELLS: STEEL; TIN PLATED
 2. INSULATORS: PBTP UL 94 V-0
 3. CONTACTS: COPPER ALLOY
 PLATING: § USE A FOR QUALITY CLASS 3
 § USE B FOR QUALITY CLASS 2
 § USE C FOR QUALITY CLASS 1

DO NOT ALTER CAD DRAWING BY HAND
 OWNERSHIP AND COPYRIGHT OF CONEC GMBH
 WRITTEN PERMISSION
 BE PASSED ON TO A THIRD PARTY WITHOUT
 REPRODUCED IN ANY WAY, AND MAY NOT
 THIS DRAWING MAY NOT BE COPIED OR

tolerance	2:1 (5:1)	
scale:	SEE NOTES	
material:		
title:	HD FILTER ADAPTER	
name	4-4 polig	
date	28.01.	Barcinski
drawn	28.01.	Mickenbecker
appd.	norm	
1997	6-old	

dwg no: 24K11P9A
 [CAD/ REL:13
 DIN-A
 3
 sh:1/1

product no: SEE TABLE

CONEC®