



Chipsmall Limited consists of a professional team with an average of over 10 year of expertise in the distribution of electronic components. Based in Hongkong, we have already established firm and mutual-benefit business relationships with customers from,Europe,America and south Asia,supplying obsolete and hard-to-find components to meet their specific needs.

With the principle of "Quality Parts,Customers Priority,Honest Operation,and Considerate Service",our business mainly focus on the distribution of electronic components. Line cards we deal with include Microchip,ALPS,ROHM,Xilinx,Pulse,ON,Everlight and Freescale. Main products comprise IC,Modules,Potentiometer,IC Socket,Relay,Connector.Our parts cover such applications as commercial,industrial, and automotives areas.

We are looking forward to setting up business relationship with you and hope to provide you with the best service and solution. Let us make a better world for our industry!



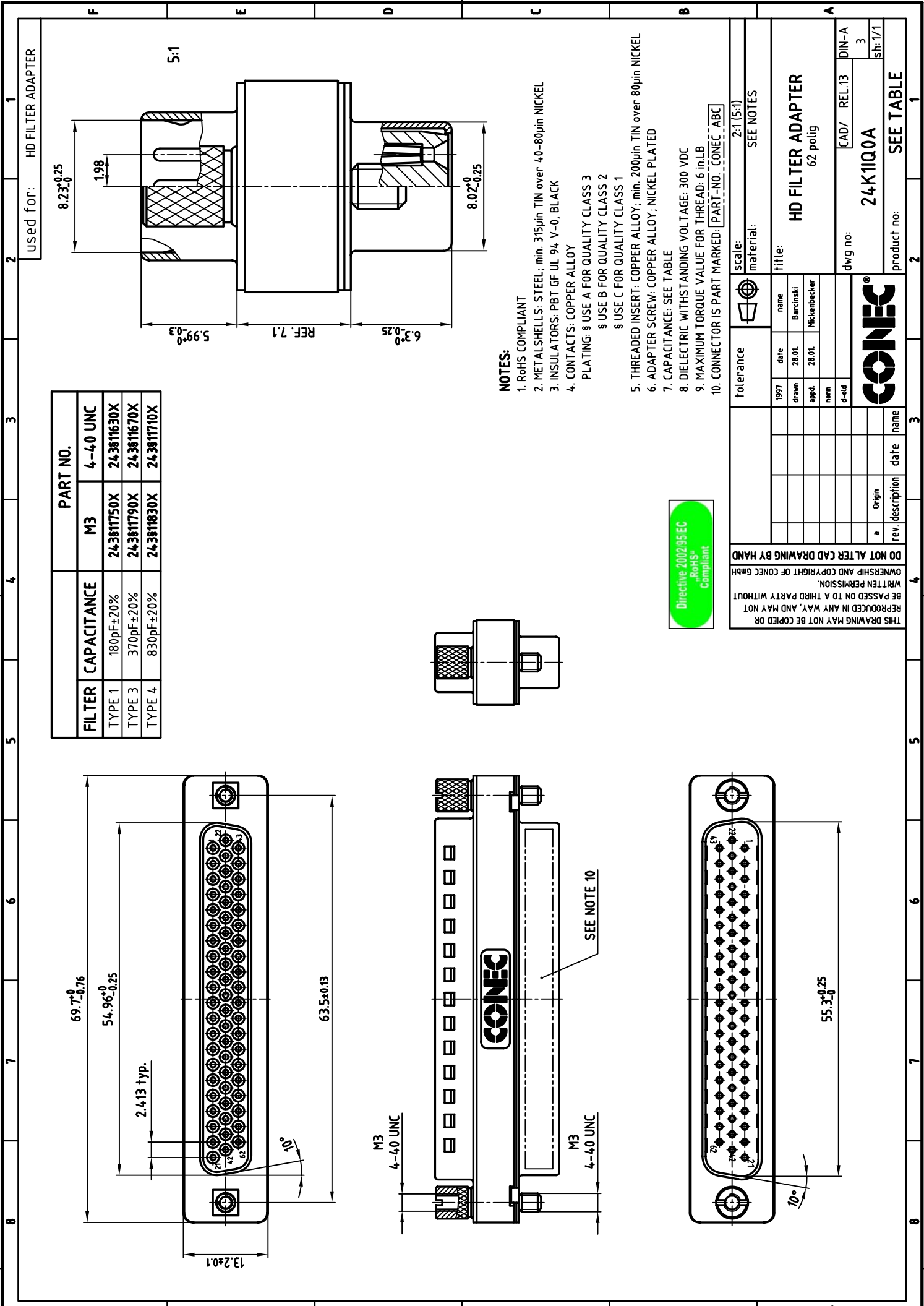
Contact us

Tel: +86-755-8981 8866 Fax: +86-755-8427 6832

Email & Skype: info@chipsmall.com Web: www.chipsmall.com

Address: A1208, Overseas Decoration Building, #122 Zhenhua RD., Futian, Shenzhen, China





| FILTER | CAPACITANCE | M3 | 4-40 UNC | PART NO. |
|--------|-------------|-------------|-------------|----------|
| TYPE 1 | 180pF±20% | 24-3811750X | 24-3811630X | |
| TYPE 3 | 370pF±20% | 24-3811790X | 24-3811670X | |
| TYPE 4 | 830pF±20% | 24-3811830X | 24-3811710X | |

NOTES:

1. RoHS COMPLIANT
2. METAL SHELLS: STEEL; min. 315µin TIN over 40-80µin NICKEL
3. INSULATORS: PBT GF UL 94 V-0, BLACK
4. CONTACTS: COPPER ALLOY
 PLATING: § USE A FOR QUALITY CLASS 3
 § USE B FOR QUALITY CLASS 2
 § USE C FOR QUALITY CLASS 1
5. THREADED INSERT: COPPER ALLOY; min. 200µin TIN over 80µin NICKEL
6. ADAPTER SCREW: COPPER ALLOY; NICKEL PLATED
7. CAPACITANCE: SEE TABLE
8. DIELECTRIC WITHSTANDING VOLTAGE: 300 VDC
9. MAXIMUM TORQUE VALUE FOR THREAD: 6 in.LB
10. CONNECTOR IS PART MARKED: [PART-NO.] CONEC [ABC]



DO NOT ALTER CAD DRAWING BY HAND
 OWNERSHIP AND COPYRIGHT OF CONEC GMBH
 WRITTEN PERMISSION.
 BE PASSED ON TO A THIRD PARTY WITHOUT
 REPRODUCTION IN ANY WAY, AND MAY NOT
 THIS DRAWING MAY NOT BE COPIED OR

| 1997 | date | name |
|-------|--------|--------------|
| drawn | 28.01. | Barcinski |
| appl. | 28.01. | Mickenbecker |
| norm | | |
| d-old | | |

tolerance: 2:1 (5:1)
 material: SEE NOTES
 title: HD FILTER ADAPTER
 62 polig

dwg no: [CAD/ REL.13] DIN-A 3
 sh: 1/1

product no: SEE TABLE

CONEC®