



Chipsmall Limited consists of a professional team with an average of over 10 year of expertise in the distribution of electronic components. Based in Hongkong, we have already established firm and mutual-benefit business relationships with customers from,Europe,America and south Asia,supplying obsolete and hard-to-find components to meet their specific needs.

With the principle of "Quality Parts,Customers Priority,Honest Operation,and Considerate Service",our business mainly focus on the distribution of electronic components. Line cards we deal with include Microchip,ALPS,ROHM,Xilinx,Pulse,ON,Everlight and Freescale. Main products comprise IC,Modules,Potentiometer,IC Socket,Relay,Connector.Our parts cover such applications as commercial,industrial, and automotives areas.

We are looking forward to setting up business relationship with you and hope to provide you with the best service and solution. Let us make a better world for our industry!



Contact us

Tel: +86-755-8981 8866 Fax: +86-755-8427 6832

Email & Skype: info@chipsmall.com Web: www.chipsmall.com

Address: A1208, Overseas Decoration Building, #122 Zhenhua RD., Futian, Shenzhen, China



"High Frequency Ceramic Solutions"

2.4 GHz Surface Mount, Above Metal, Low Profile Mini Chip Antenna

P/N 2450AT42E0100

This antenna must have metal directly underneath on bottom layer in order to function properly

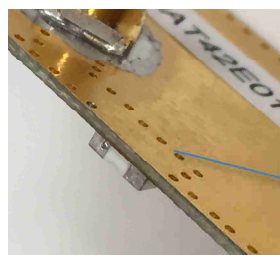
Detail Specification: 10/17/2016

Page 1 of 4

This is the Web version of this datasheet, for the full datasheet, please contact us at: www.johansontechnology.com/ask-a-question

General Specifications

Part Number	2450AT42E0100
Frequency (MHz)	2400 - 2480
Peak Gain	-2.0 dBi typ. (YZ-V)
Impedance	50Ω
Power Capacity	2W max. (CW)
Q'ty/Reel (pcs)	2,000 pcs
Operating Temp	-40 to +85°C
Storage Temp	-40 to +85°C
Storage Period	18 months max.



Zero Clearance!

Antenna mounts directly above or below the metal layer of PCB. No antenna clearance required

Total average radiated efficiency on PCB feature on "Mounting Considerations 1" (orderable EVB p/n: 2450AT42E0100-EB1SMA) is ~30%

This antenna was designed in mind for small coin cell, wearable, IoT, 2.4 BLE, 802.11, ISM, Zigbee, etc. applications in close-range networks where metal or a battery/display covers the entire length or side of the PCB or encasement must be present directly under the antenna and there's no room for usual/typical antenna metal clearance.

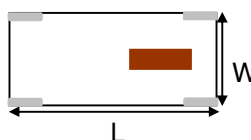
This antenna is specifically designed for PCBs that have 0.5-1mm of total thickness

Part Number Explanation

P/N Suffix	Packing Style	Bulk	Suffix = S	e.g.. 2450AT42E0100S
		T & R	Suffix = E	e.g.. 2450AT42E0100E
EVB p/n		2450AT42E0100-EB1SMA (comes with 1 female SMA connector)		

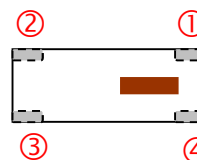
Mechanical Specifications¹

	In	mm
L	0.197 ± 0.008	5.00 ± 0.20
W	0.079 ± 0.008	2.00 ± 0.20
T	0.059 ± 0.008	1.50 ± 0.20



Terminal Configuration

1	Feeding Point
2	NC ²
3	GND
4	GND



¹Total Top layer area occupied by antenna is 6.3x3.0mm

²Make sure to have Pin 2 soldered to its PCB land pad but **not** connected to GND or input, it must be NC (or floating).

If you'd like the complete datasheet which includes detailed layout specs, tuning techniques, and application notes for IoT/wearables, send us as message at: www.johansontechnology.com/ask-a-question



www.johansontechnology.com

4001 Calle Tecate • Camarillo, CA 93012 • TEL 805.389.1166 FAX 805.389.1821

Ver. 1.3

2016 Johanson Technology, Inc. All Rights Reserved

"High Frequency Ceramic Solutions"

2.4 GHz Surface Mount, Above Metal, Low Profile Mini Chip Antenna

P/N 2450AT42E0100

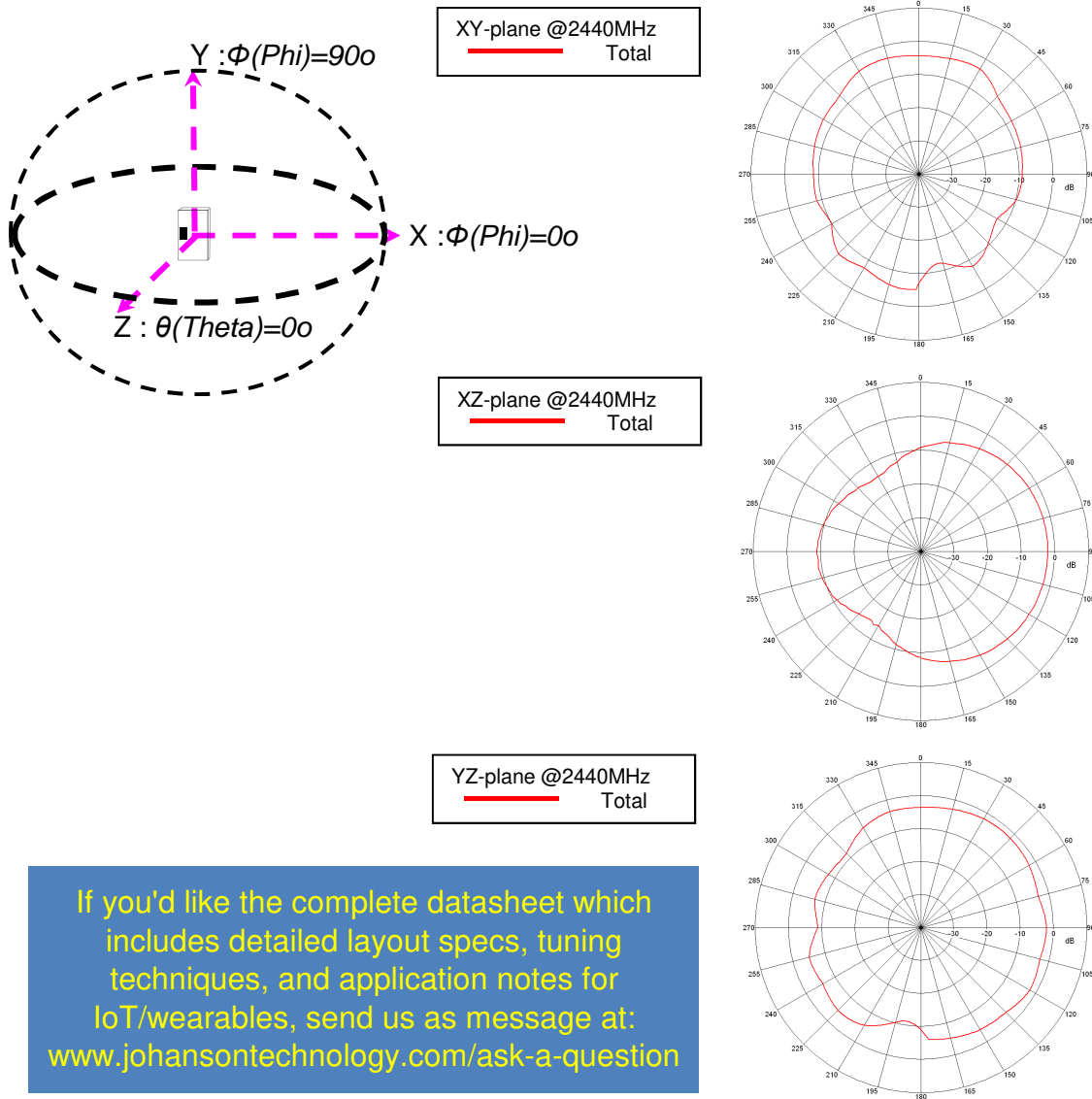
This antenna must have metal directly underneath on bottom layer in order to function properly

Detail Specification: 10/17/2016

Page 2 of 4

This is the Web version of this datasheet, for the full datasheet, please contact us at: www.johansontechnology.com/ask-a-question

Typical Electrical Characteristics (T=25 °C) Radiation Patterns@2.44GHz



If you'd like the complete datasheet which includes detailed layout specs, tuning techniques, and application notes for IoT/wearables, send us as message at: www.johansontechnology.com/ask-a-question

Johanson Technology, Inc. reserves the right to make design changes without notice. Please confirm the specifications and delivery conditions when placing your order. All sales are subject to Johanson Technology, Inc. terms and conditions.



"High Frequency Ceramic Solutions"

2.4 GHz Surface Mount, Above Metal, Low Profile Mini Chip Antenna

P/N 2450AT42E0100

This antenna must have metal underneath in order to function properly

Detail Specification: 10/17/2016

Page 3 of 4

How To Choose The Correct Antenna Variant

Refer to the table below for substrate thickness and the corresponding antenna variation.

PCB Substrate Thickness	Recommended JTI PN
≤ 1.0mm	2450AT42E0100
1.0mm - 2.0mm	2450AT42E010B
≥ 2.0mm	2450AT42E010C

Typical Efficiency Values @ 2.44GHz for various scenarios for a 30x50mm PCB

The following efficiency values represent performance on a 30x50mm EVB like on page 2. Please note that antenna efficiency varies widely with board layout, size and surroundings.

PCB Substrate Thickness (H)	Simulated Antenna Efficiency(%) @ 2.44GHz		
	2450AT42E0100	2450AT42E010B	2450AT42E010C
H = 0.12 mm	1.95%	1.02%	0.93%
H = 0.7 mm	29.20%	9.30%	2.30%
H = 1.5 mm	23.30%	41.90%	13.80%
H = 2.5 mm	21.60%	34.20%	38.40%

We encourage you to use a relatively thick dielectric layer below antenna, as we have seen a direct correlation between substrate thickness and antenna performance.

Note: "H" substrate thickness of <0.25mm (10mil) is not recommended. The component will still work and radiate, just not optimally.

If you'd like the complete datasheet which includes detailed layout specs, tuning techniques, and application notes for IoT/wearables, send us a message at:
www.johansontechnology.com/ask-a-question

Johanson Technology, Inc. reserves the right to make design changes without notice. Please confirm the specifications and delivery conditions when placing your order. All sales are subject to Johanson Technology, Inc. terms and conditions.



4001 Calle Tecate • Camarillo, CA 93012 • TEL 805.389.1166 FAX 805.389.1821

Ver. 1.3

2016 Johanson Technology, Inc. All Rights Reserved

www.johansontechnology.com

"High Frequency Ceramic Solutions"

2.4 GHz Surface Mount, Above Metal, Low Profile Mini Chip Antenna

P/N 2450AT42E0100

This antenna must have metal directly underneath on bottom layer in order to function properly

Detail Specification: 10/17/2016

Page 4 of 4

This is the Web version of this datasheet, for the full datasheet, please contact us at: www.johansontechnology.com/ask-a-question

Antenna layout review, tuning, and characterization services

www.johansontechnology.com/ipc-antenna-services

More SMD Chip Antennas at:

www.johansontechnology.com/antennas

Soldering Information

www.johansontechnology.com/ipcsoldering-profile

Antenna layout and tuning techniques (How to obtain the new antenna matching values)

www.johansontechnology.com/tuning

Packaging information

<http://www.johansontechnology.com/tape-reel-packaging>

RoHS Compliance

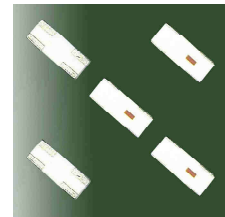
www.johansontechnology.com/rohs-compliance

MSL Info

www.johansontechnology.com/msl-rating

P/N Explanation and Breakdown

www.johansontechnology.com/ipc-pn-explained



**Recommended Storage Conditions of
uninstalled product still on T&R**

-40 ~ +85 °C, Humidity 45~75%RH, 18 mos. Max

If you'd like the complete datasheet which includes detailed layout specs, tuning techniques, and application notes for IoT/wearables, send us as message at:
www.johansontechnology.com/ask-a-question

Johanson Technology, Inc. reserves the right to make design changes without notice. Please confirm the specifications and delivery conditions when placing your order. All sales are subject to Johanson Technology, Inc. terms and conditions.

Technical Author: Manuel Carmona



www.johansontechnology.com

4001 Calle Tecate • Camarillo, CA 93012 • TEL 805.389.1166 FAX 805.389.1821

Ver. 1.3

2016 Johanson Technology, Inc. All Rights Reserved