



Chipsmall Limited consists of a professional team with an average of over 10 year of expertise in the distribution of electronic components. Based in Hongkong, we have already established firm and mutual-benefit business relationships with customers from,Europe,America and south Asia,supplying obsolete and hard-to-find components to meet their specific needs.

With the principle of "Quality Parts,Customers Priority,Honest Operation,and Considerate Service",our business mainly focus on the distribution of electronic components. Line cards we deal with include Microchip,ALPS,ROHM,Xilinx,Pulse,ON,Everlight and Freescale. Main products comprise IC,Modules,Potentiometer,IC Socket,Relay,Connector.Our parts cover such applications as commercial,industrial, and automotives areas.

We are looking forward to setting up business relationship with you and hope to provide you with the best service and solution. Let us make a better world for our industry!



Contact us

Tel: +86-755-8981 8866 Fax: +86-755-8427 6832

Email & Skype: info@chipsmall.com Web: www.chipsmall.com

Address: A1208, Overseas Decoration Building, #122 Zhenhua RD., Futian, Shenzhen, China



High Frequency Ceramic Solutions

2.45 GHz Antenna

P/N 2450AT43D100

Detail Specification: 11/29/06

Page 1 of 4

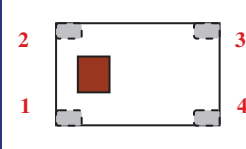
General Specifications

Part Number	2450AT43D100
Freq. Range (GHz)	2400 - 2500
Peak Gain (XZ-V)	-0.5 dBi typ.
Average Gain (XZ-V)	-3.6 dBi typ.
Return Loss	9.5 dB min.

Input Power	3W max.
Impedance	50 Ω
Operating Temp.	-40 to +85°C
Reel Quantity	1,000

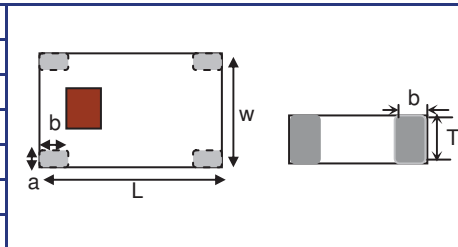
P/N Suffix	Packaging Style	Bulk	Suffix = S	Eg. 2450AT43D100S
		T & R	Suffix = E	Eg. 2450AT43D100E
Termination Style		100% Tin	Suffix = None	Eg. 2450AT43D100(E or S)
		Tin / Lead	Suffix = /Pb	Eg. 2450AT43D100(E or S)/Pb

Terminal Configuration	
No.	Function
1	Feeding Point
2	GND
3	GND
4	GND



Mechanical Dimensions

	In	mm
L	0.236 \pm 0.008	6.00 \pm 0.20
W	0.098 \pm 0.008	2.50 \pm 0.20
T	0.079 \pm 0.008	2.00 \pm 0.20
a	0.020 \pm 0.008	0.50 \pm 0.20
b	0.059 \pm 0.008	1.50 \pm 0.20

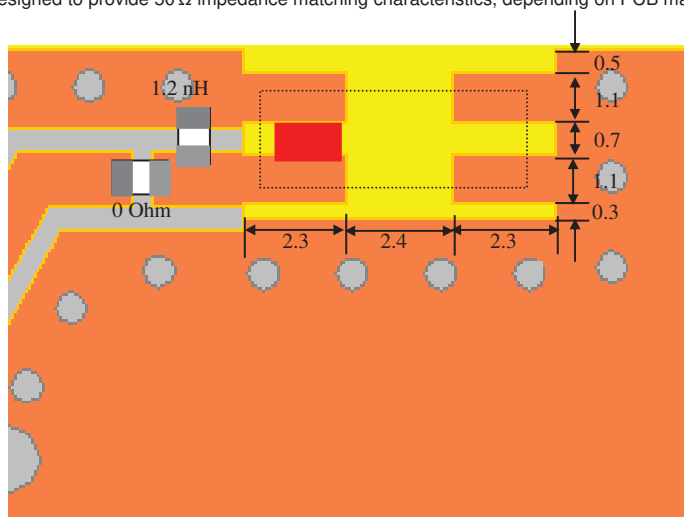


Mounting Considerations

Mount these devices with white mark facing up. Units: mm

* Line width should be designed to provide 50 Ω impedance matching characteristics, depending on PCB material and thickness.

With
Matching
Circuits



Johanson Technology, Inc. reserves the right to make design changes without notice.
All sales are subject to Johanson Technology, Inc. terms and conditions.



www.johansontechnology.com

931 Via Alondra • Camarillo, CA 93012 • TEL 805.389.1166 FAX 805.389.1821

2003 Johanson Technology, Inc. All Rights Reserved

High Frequency Ceramic Solutions

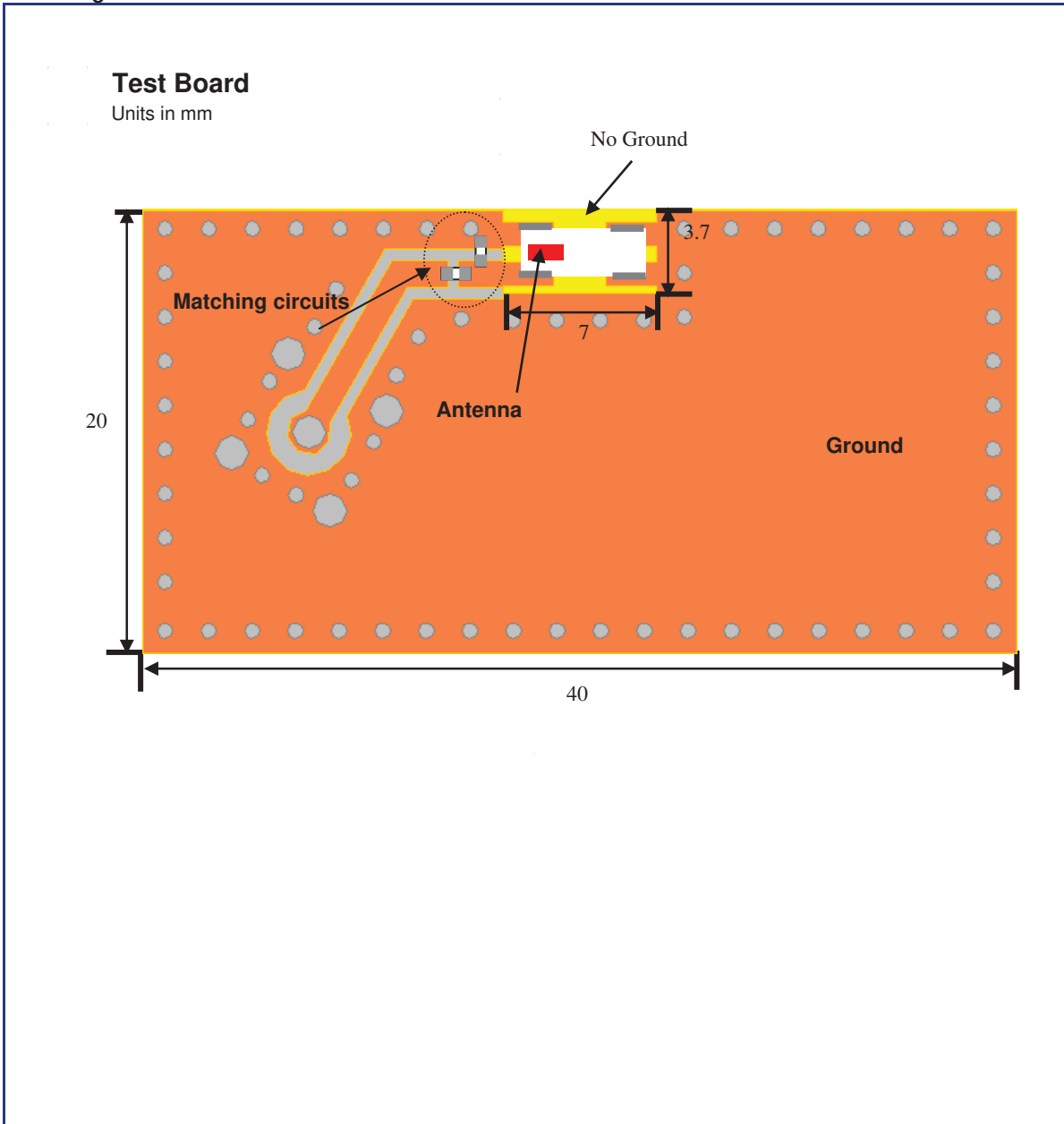
2.45 GHz Antenna

P/N 2450AT43D100

Detail Specification: 11/29/06

Page 2 of 4

Mounting Considerations



Johanson Technology, Inc. reserves the right to make design changes without notice.
All sales are subject to Johanson Technology, Inc. terms and conditions.



www.johansontechnology.com

931 Via Alondra • Camarillo, CA 93012 • TEL 805.389.1166 FAX 805.389.1821

2003 Johanson Technology, Inc. All Rights Reserved

High Frequency Ceramic Solutions

2.45 GHz Antenna

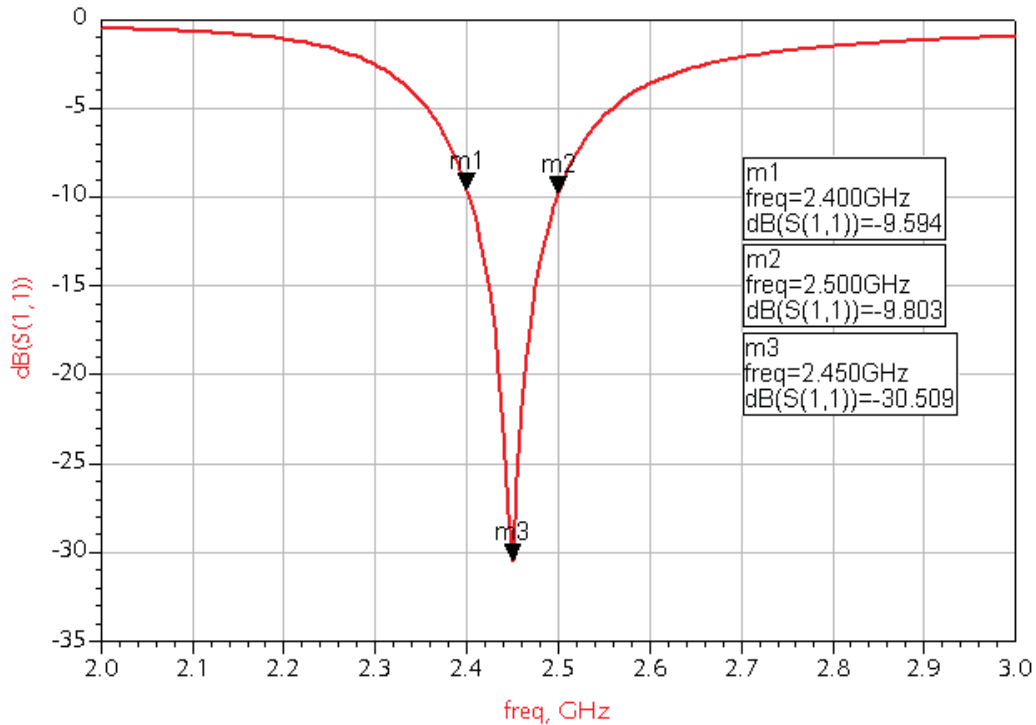
P/N 2450AT43D100

Detail Specification: 11/29/06

Page 3 of 4

Mounting Considerations

Return Loss & Isolation (With Matching Circuits)



Johanson Technology, Inc. reserves the right to make design changes without notice.
All sales are subject to Johanson Technology, Inc. terms and conditions.



www.johansontechnology.com

931 Via Alondra • Camarillo, CA 93012 • TEL 805.389.1166 FAX 805.389.1821

2003 Johanson Technology, Inc. All Rights Reserved

High Frequency Ceramic Solutions

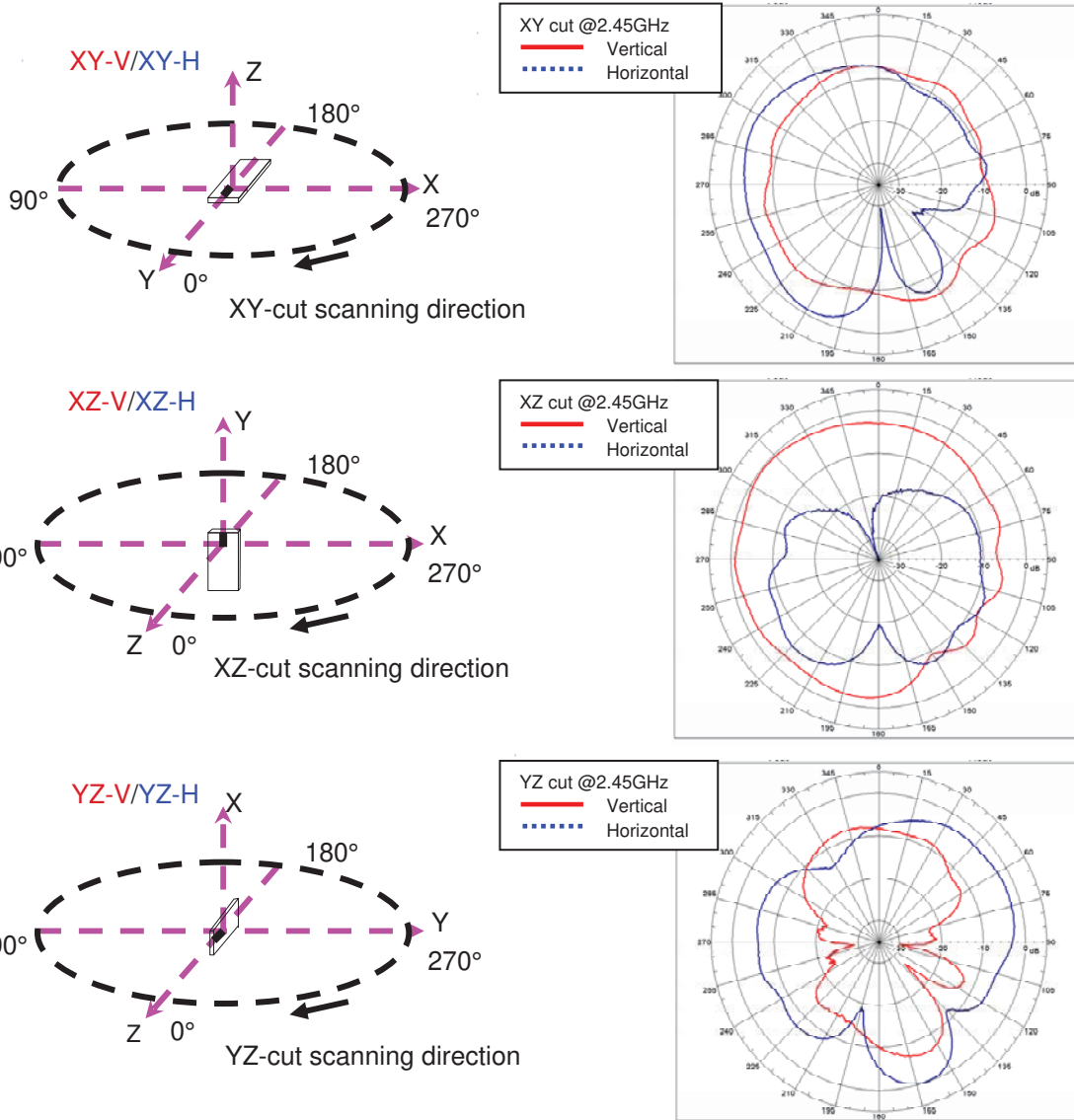
2.45 GHz Antenna

P/N 2450AT43D100

Detail Specification: 11/29/06

Page 4 of 4

Ant1 Radiation Patterns



Johanson Technology, Inc. reserves the right to make design changes without notice.
 All sales are subject to Johanson Technology, Inc. terms and conditions.



www.johansontechnology.com

931 Via Alondra • Camarillo, CA 93012 • TEL 805.389.1166 FAX 805.389.1821

2003 Johanson Technology, Inc. All Rights Reserved