



Chipsmall Limited consists of a professional team with an average of over 10 year of expertise in the distribution of electronic components. Based in Hongkong, we have already established firm and mutual-benefit business relationships with customers from,Europe,America and south Asia,supplying obsolete and hard-to-find components to meet their specific needs.

With the principle of “Quality Parts,Customers Priority,Honest Operation,and Considerate Service”,our business mainly focus on the distribution of electronic components. Line cards we deal with include Microchip,ALPS,ROHM,Xilinx,Pulse,ON,Everlight and Freescale. Main products comprise IC,Modules,Potentiometer,IC Socket,Relay,Connector.Our parts cover such applications as commercial,industrial, and automotives areas.

We are looking forward to setting up business relationship with you and hope to provide you with the best service and solution. Let us make a better world for our industry!



## Contact us

Tel: +86-755-8981 8866 Fax: +86-755-8427 6832

Email & Skype: info@chipsmall.com Web: www.chipsmall.com

Address: A1208, Overseas Decoration Building, #122 Zhenhua RD., Futian, Shenzhen, China



# High Frequency Ceramic Solutions

## 2.4 GHz Impedance-Matched Integrated RF Front End Passive Balun Filter P/N 2450BM14E0007 for ADF7241 and AADF7242

Detail Specification: 8/30/2012

Page 1 of 3

### General Specifications

Part Number	2450BM14E0007
Frequency (MHz)	2400 - 2500
Unbalanced Impedance (Antenna Out)	50 $\Omega$
Balanced Differential Impedance	Conjugate match to ADI ADF7241 and ADF7242
Attenuation (dB)	25min.@4800~5000MHz 25min.@7200~7500MHz
Power Capacity	2W max.

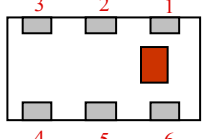
Insertion Loss	1.5 dB max.
Return Loss	9.5 dB min.
Phase Difference	180° $\pm$ 10°
Amplitude Difference	2.0 dB max.
Reel Quantity	4,000
Operating Temperature	-40 to +85°C
Recommended Storage Conditions	+5 to +35°C, Humidity: 45-75%RH, 18 mos. Max *

\*18 months in vacuum sealed bag and 1 week cumulative after opened. For more info go to [www.johansontechnology.com/silverleads](http://www.johansontechnology.com/silverleads)

P/N Suffix	Packaging Style	Bulk	Suffix = S	Eg. 2450BM14E0007S
		T & R (Paper)	Suffix = E	Eg. 2450BM14E0007T
	Termination Style	AgPt	Suffix = None	Eg. 2450BM14E0007(S or T)

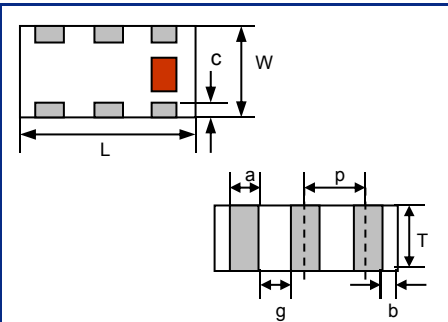
### Terminal Configuration

No.	Function
1	Unbalanced Port
2	GND
3	Balanced Port
4	Balanced Port
5	GND
6	GND



### Mechanical Dimensions

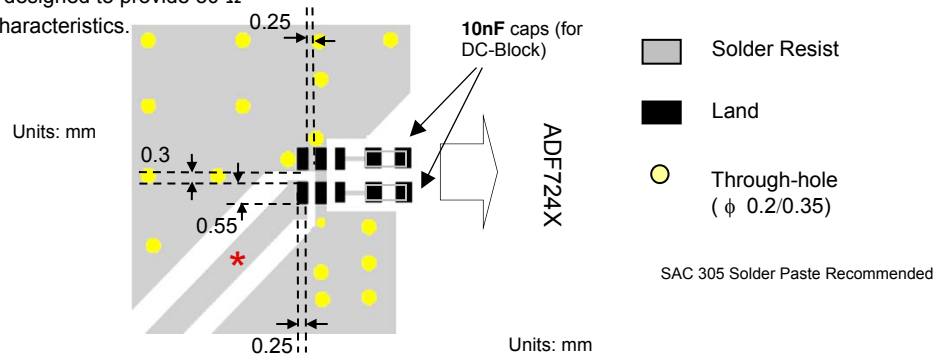
	In	mm
L	0.063 $\pm$ 0.004	1.60 $\pm$ 0.10
W	0.031 $\pm$ 0.004	0.80 $\pm$ 0.10
T	0.024 $\pm$ 0.004	0.60 $\pm$ 0.10
a	0.008 $\pm$ 0.004	0.20 $\pm$ 0.10
b	0.008 +.004/-0.006	0.20 +0.1/-0.15
c	0.006 $\pm$ 0.004	0.15 $\pm$ 0.10
g	0.012 $\pm$ 0.004	0.30 $\pm$ 0.10
p	0.020 $\pm$ 0.002	0.50 $\pm$ 0.05



### Mounting Considerations

Mount these devices with brown mark facing up.

\* Line width should be designed to provide 50  $\Omega$  impedance matching characteristics.



Johanson Technology, Inc. reserves the right to make design changes without notice.  
All sales are subject to Johanson Technology, Inc. terms and conditions.



# High Frequency Ceramic Solutions

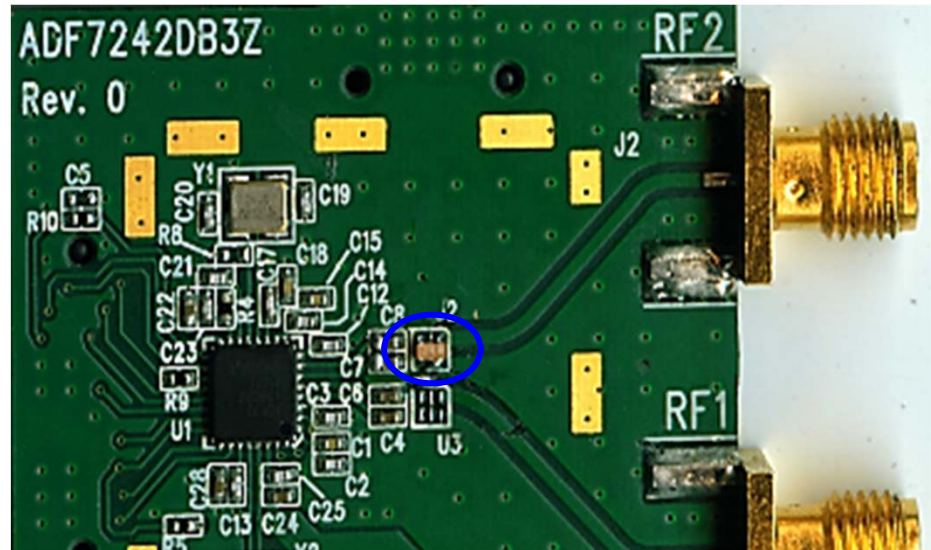
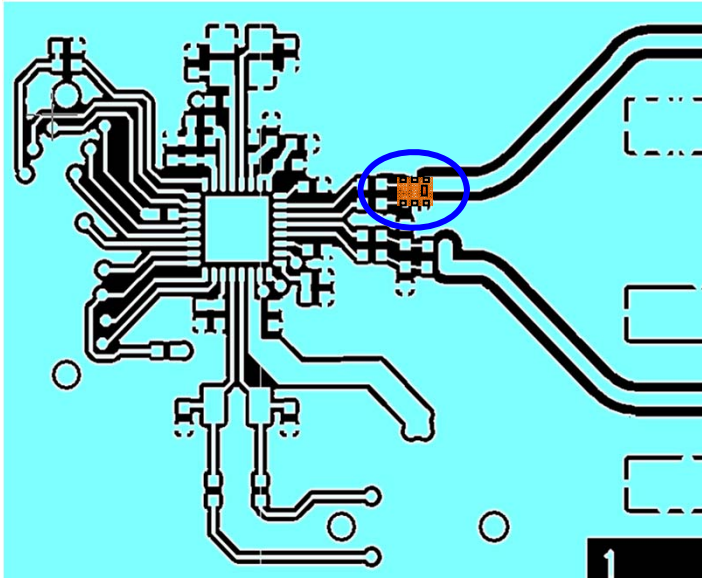
2.4 GHz Impedance-Matched Integrated RF Front End Passive Balun Filter  
for ADF7241 and AADF7242

P/N 2450BM14E0007

Detail Specification: 8/30/2012

Page 2 of 3

## Layout Details



Johanson Technology, Inc. reserves the right to make design changes without notice.  
All sales are subject to Johanson Technology, Inc. terms and conditions.



[www.johansontechnology.com](http://www.johansontechnology.com)

4001 Calle Tecate • Camarillo, CA 93012 • TEL 805.389.1166 FAX 805.389.1821

2012 Johanson Technology, Inc. All Rights Reserved

# High Frequency Ceramic Solutions

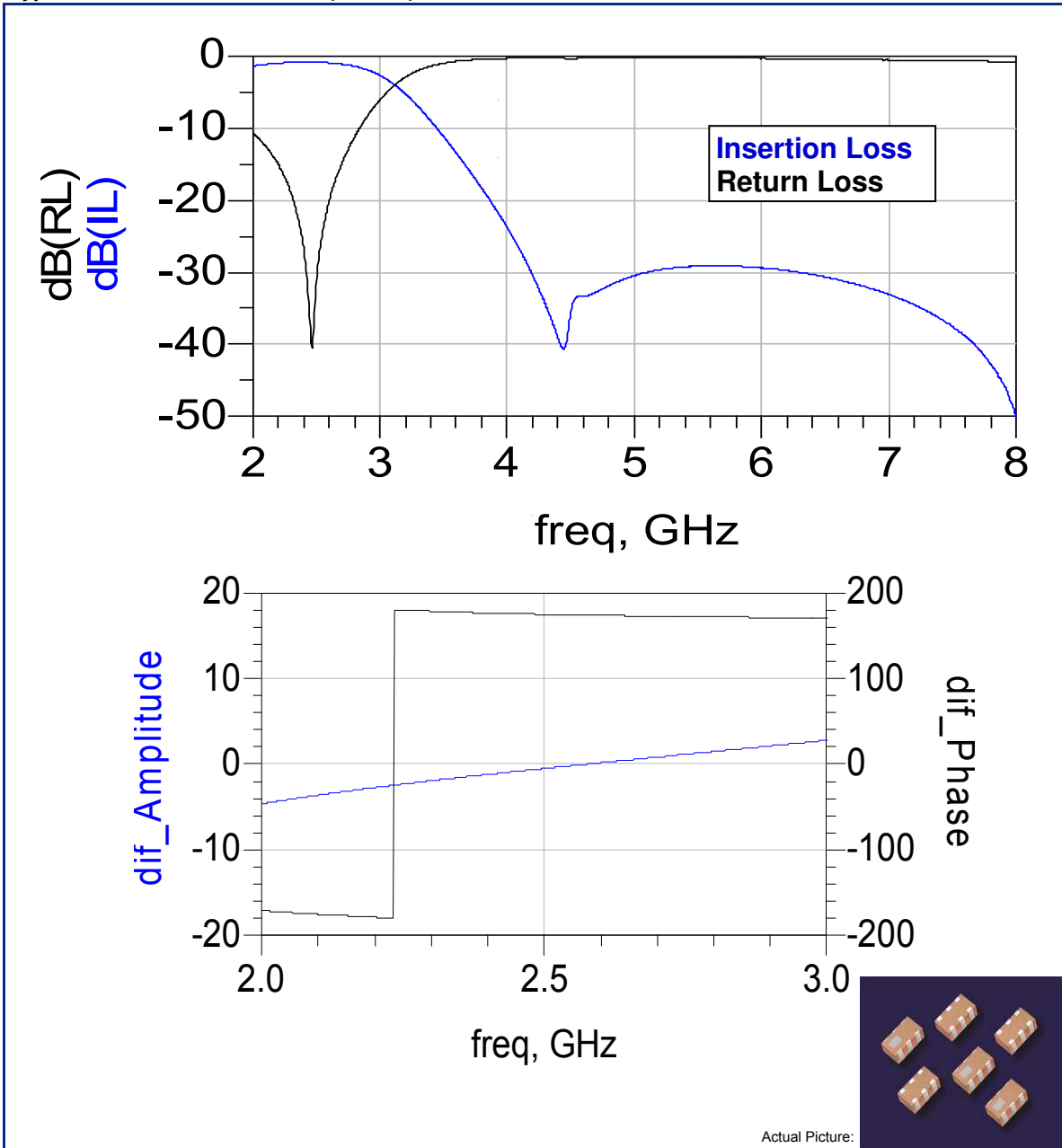
2.4 GHz Impedance-Matched Integrated RF Front End Passive Balun Filter  
for ADF7241 and AADF7242

P/N 2450BM14E0007

Detail Specification: 8/30/2012

Page 3 of 3

## Typical Electrical Performance (T=25°C)



Johanson Technology, Inc. reserves the right to make design changes without notice.  
All sales are subject to Johanson Technology, Inc. terms and conditions.



[www.johansontechnology.com](http://www.johansontechnology.com)  
4001 Calle Tecate • Camarillo, CA 93012 • TEL 805.389.1166 FAX 805.389.1821

2012 Johanson Technology, Inc. All Rights Reserved