



Chipsmall Limited consists of a professional team with an average of over 10 year of expertise in the distribution of electronic components. Based in Hongkong, we have already established firm and mutual-benefit business relationships with customers from,Europe,America and south Asia,supplying obsolete and hard-to-find components to meet their specific needs.

With the principle of "Quality Parts,Customers Priority,Honest Operation,and Considerate Service",our business mainly focus on the distribution of electronic components. Line cards we deal with include Microchip,ALPS,ROHM,Xilinx,Pulse,ON,Everlight and Freescale. Main products comprise IC,Modules,Potentiometer,IC Socket,Relay,Connector.Our parts cover such applications as commercial,industrial, and automotives areas.

We are looking forward to setting up business relationship with you and hope to provide you with the best service and solution. Let us make a better world for our industry!



Contact us

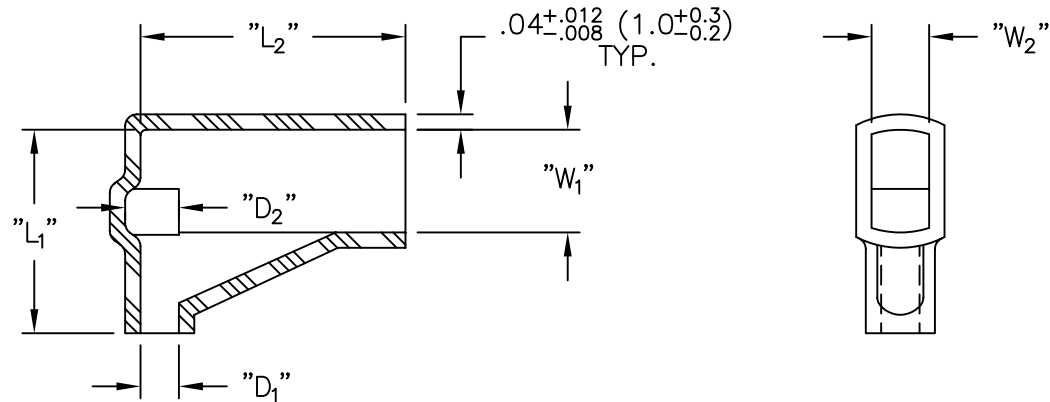
Tel: +86-755-8981 8866 Fax: +86-755-8427 6832

Email & Skype: info@chipsmall.com Web: www.chipsmall.com

Address: A1208, Overseas Decoration Building, #122 Zhenhua RD., Futian, Shenzhen, China



CONNECTOR SERIES	PART NO.	WIRE O.D. RANGE	WIRE GA.	"D ₁ "	"D ₂ "	"L ₁ "±.08 (±2.0)	"L ₂ "±.06 (±1.5)	"W ₁ "	"W ₂ "	ID NO. ON PART
187	246225	.058-.091 (1.5-2.3)	22-18	.10 (2.5)	.14 (3.5)	.45 (11.5)	.55 (14.0)	.24 (6.2)	.12 (3.0)	S54
	246230	.068-.113 (1.7-2.9)	20-18	.12 (3.0)	.16 (4.0)					S55
	246232	.071-.126 (1.8-3.2)	18-16	.13 (3.2)	.17 (4.2)					S56
250	248525	.058-.091 (1.5-2.3)	22-18	.10 (2.5)	.14 (3.5)	.53 (13.5)	.69 (17.5)	.34 (8.5)	.18 (4.5)	S61
	248530	.068-.113 (1.7-2.9)	20-18	.12 (3.0)	.16 (4.0)					S62
	248532	.071-.126 (1.8-3.2)	18-16	.13 (3.2)	.17 (4.2)					S63
	248540	.091-.140 (2.3-3.6)	16-14	.16 (4.0)	.20 (5.0)					S64
	248548	.113-.190 (2.9-4.8)	14-12	.19 (4.8)	.23 (5.8)					S65
	248550	.140-.190 (3.6-4.8)	12-10	.20 (5.0)	.24 (6.0)					S66



NOTES:

- MAT'L: SOFT PVC, (RMS-55).
- COLOR: TRANSPARENT BLUE.

A		UPDATED TABLE AND CHANGED FILE NO.	SM 02.28.02	TITLE: FLAG TYPE INSULATING SLEEVE				DWG IN IN (MM)		FINAL			
REV		DESCRIPTION	ENGR DATE	TOLERANCES UNLESS NOTED .XX=±.010 .XXX=±.005 FRAC=±1/64 ANG=±1°	FILE # 246-248 SERIES	DWN: P.B.	APP:	PART #		PRINT TYPE		CA	
				MAT'L: SEE NOTES	RE: RICHCO, INC.	DT: 12-14-95	DT:	SEE TABLE					
						RICHCO INC. PO BOX 804238, CHICAGO, 60680 (773) 539-4060							