



Chipsmall Limited consists of a professional team with an average of over 10 year of expertise in the distribution of electronic components. Based in Hongkong, we have already established firm and mutual-benefit business relationships with customers from,Europe,America and south Asia,supplying obsolete and hard-to-find components to meet their specific needs.

With the principle of “Quality Parts,Customers Priority,Honest Operation,and Considerate Service”,our business mainly focus on the distribution of electronic components. Line cards we deal with include Microchip,ALPS,ROHM,Xilinx,Pulse,ON,Everlight and Freescale. Main products comprise IC,Modules,Potentiometer,IC Socket,Relay,Connector.Our parts cover such applications as commercial,industrial, and automotives areas.

We are looking forward to setting up business relationship with you and hope to provide you with the best service and solution. Let us make a better world for our industry!



Contact us

Tel: +86-755-8981 8866 Fax: +86-755-8427 6832

Email & Skype: info@chipsmall.com Web: www.chipsmall.com

Address: A1208, Overseas Decoration Building, #122 Zhenhua RD., Futian, Shenzhen, China



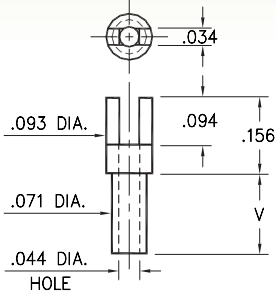
MALE PCB PINS

SOLDER TERMINALS SLOTTED

2314

2314-X-01-XX-00-00-07-0

Swage mount in .076 hole

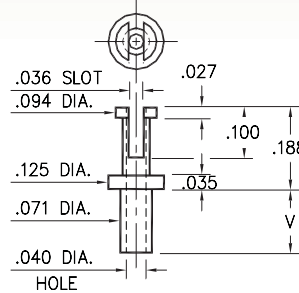


Basic Part Number	Board Thickness	Length V
2314-1	.031	.045
2314-2	.062	.094
2314-3	.094	.125
2314-4	.125	.156

2511

2511-X-01-XX-00-00-07-0

Swage mount in .076 hole

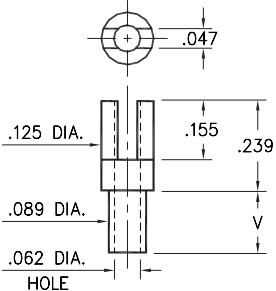


Basic Part Number	Board Thickness	Length V
2511-1	.031	.063
2511-2	.062	.094
2511-3	.094	.125
2511-4	.125	.156

2515

2515-X-01-XX-00-00-07-0

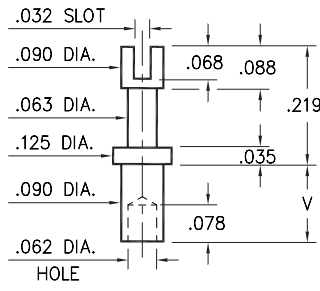
Swage mount in .094 hole



2516

2516-X-01-XX-00-00-07-0

Swage mount in .094 hole

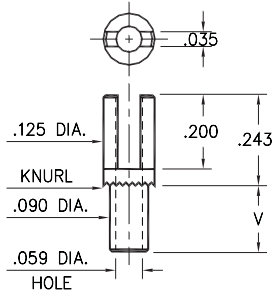


Basic Part Number	Board Thickness	Length V
251X-1	.031	.075
251X-2	.062	.105
251X-3	.094	.135
251X-4	.125	.147

2502

2502-X-01-XX-00-00-07-0

Swage mount in .094 hole



Basic Part Number	Board Thickness	Length V
2502-1	.031	.080
2502-2	.062	.111
2502-3	.094	.143
2502-4	.125	.174

SPECIFICATIONS:

Pin Material: Brass Alloy 360, 1/2 Hard
(Swage pins are annealed)

Dimensions: Inches

Tolerances On: Lengths: $\pm .005$
Diameters: $\pm .002$
Angles: $\pm 2^\circ$



ORDER CODE: XXXX - X - 01 - XX - 00 - 00 - 07 - 0

BASIC PART #

SPECIFY PIN FINISH:

- 01 200 μ " TIN/LEAD OVER NICKEL
- ◆ 80 200 μ " TIN OVER NICKEL (RoHS)
- ◆ 44 300 μ " SILVER OVER COPPER (RoHS)
- 50 300 μ " ELECTRO-SOLDER
(60/40 SnPb)

