



Chipsmall Limited consists of a professional team with an average of over 10 year of expertise in the distribution of electronic components. Based in Hongkong, we have already established firm and mutual-benefit business relationships with customers from,Europe,America and south Asia,supplying obsolete and hard-to-find components to meet their specific needs.

With the principle of "Quality Parts,Customers Priority,Honest Operation,and Considerate Service",our business mainly focus on the distribution of electronic components. Line cards we deal with include Microchip,ALPS,ROHM,Xilinx,Pulse,ON,Everlight and Freescale. Main products comprise IC,Modules,Potentiometer,IC Socket,Relay,Connector.Our parts cover such applications as commercial,industrial, and automotives areas.

We are looking forward to setting up business relationship with you and hope to provide you with the best service and solution. Let us make a better world for our industry!



## Contact us

Tel: +86-755-8981 8866 Fax: +86-755-8427 6832

Email & Skype: info@chipsmall.com Web: www.chipsmall.com

Address: A1208, Overseas Decoration Building, #122 Zhenhua RD., Futian, Shenzhen, China



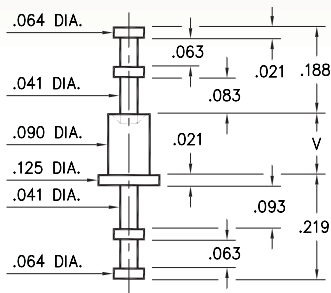
# MALE PCB PINS

## SOLDER TERMINAL TURRETS

### 2512

2512-X-00-XX-00-00-07-0

Swage mount in .094 hole

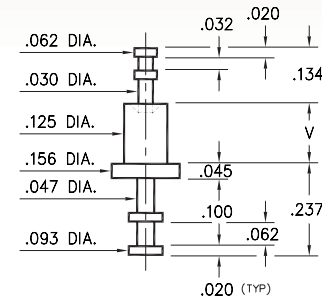


Basic Part Number	Board Thickness	Length V
<b>2512-1</b>	.031	.062
<b>2512-2</b>	.062	.094
<b>2512-3</b>	.094	.125
<b>2512-4</b>	.125	.156

### 2705

2705-X-00-XX-00-00-07-0

Swage mount in .129 hole

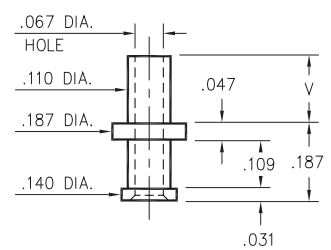


Basic Part Number	Board Thickness	Length V
<b>2705-1</b>	.031	.075
<b>2705-2</b>	.062	.105
<b>2705-3</b>	.094	.135
<b>2705-4</b>	.125	.165

### 2803

2803-X-00-XX-00-00-07-0

Swage mount in .113 hole

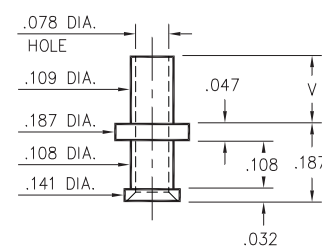


Basic Part Number	Board Thickness	Length V
<b>2803-1</b>	.031	.078
<b>2803-2</b>	.062	.109
<b>2803-3</b>	.094	.140
<b>2803-4</b>	.125	.171

### 2815

2815-X-00-XX-00-00-07-0

Swage mount in .113 hole

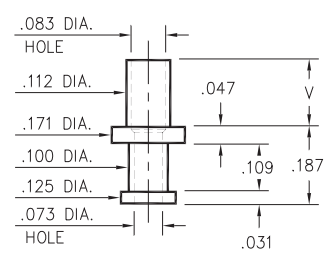


Basic Part Number	Board Thickness	Length V
<b>2815-1</b>	.031	.075
<b>2815-2</b>	.062	.105
<b>2815-3</b>	.094	.135
<b>2815-4</b>	.125	.165

### 2816

2816-X-00-XX-00-00-07-0

Swage mount in .116 hole

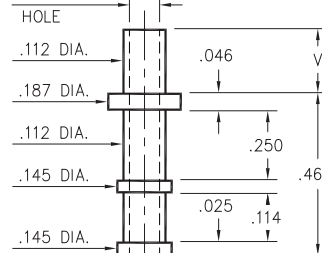


Basic Part Number	Board Thickness	Length V
<b>2816-1</b>	.031	.078
<b>2816-2</b>	.062	.109
<b>2816-3</b>	.094	.141
<b>2816-4</b>	.125	.172

### 2817

2817-X-00-XX-00-00-07-0

Swage mount in .116 hole



Basic Part Number	Board Thickness	Length V
<b>2817-1</b>	.031	.075
<b>2817-2</b>	.062	.105
<b>2817-3</b>	.094	.135
<b>2817-4</b>	.125	.165

#### SPECIFICATIONS:

**Pin Material:** Brass Alloy 360, 1/2 Hard  
(Swage pins are annealed)

**Dimensions:** Inches

**Tolerances On:** Lengths: ±.005  
Diameters: ±.002  
Angles: ±2°



ORDER CODE: **XXXX - X - 00 - XX - 00 - 00 - 07 - 0**

BASIC PART #

SPECIFY PIN FINISH:

- 01 200 μ" TIN/LEAD OVER NICKEL
- ◆ 80 200 μ" TIN OVER NICKEL (RoHS)
- ◆ 44 300 μ" SILVER OVER COPPER (RoHS)
- 50 300 μ" ELECTRO-SOLDER  
(60/40 SnPb)

