



Chipsmall Limited consists of a professional team with an average of over 10 year of expertise in the distribution of electronic components. Based in Hongkong, we have already established firm and mutual-benefit business relationships with customers from,Europe,America and south Asia,supplying obsolete and hard-to-find components to meet their specific needs.

With the principle of “Quality Parts,Customers Priority,Honest Operation,and Considerate Service”,our business mainly focus on the distribution of electronic components. Line cards we deal with include Microchip,ALPS,ROHM,Xilinx,Pulse,ON,Everlight and Freescale. Main products comprise IC,Modules,Potentiometer,IC Socket,Relay,Connector.Our parts cover such applications as commercial,industrial, and automotives areas.

We are looking forward to setting up business relationship with you and hope to provide you with the best service and solution. Let us make a better world for our industry!



Contact us

Tel: +86-755-8981 8866 Fax: +86-755-8427 6832

Email & Skype: info@chipsmall.com Web: www.chipsmall.com

Address: A1208, Overseas Decoration Building, #122 Zhenhua RD., Futian, Shenzhen, China



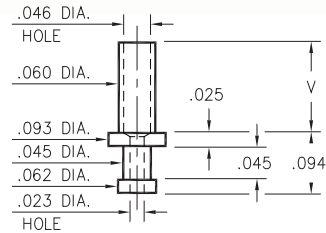
MALE PCB PINS

SOLDER TERMINAL TURRETS

2312

2312-X-00-XX-00-00-07-0

Swage mount in .064 hole

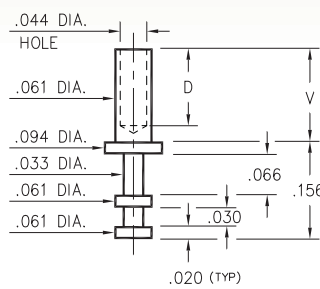


Basic Part Number	Board Thickness	Length V
2312-1	.031	.053
2312-2	.062	.094
2312-3	.094	.115
2312-4	.125	.147

2308

2308-X-00-XX-00-00-07-0

Swage mount in .064 hole

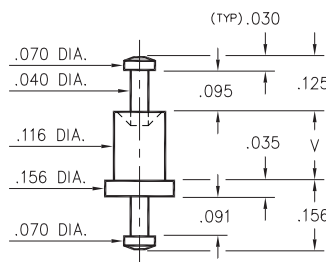


Basic Part Number	Board Thickness	Length V	Depth D
2308-1	.031	.054	.036
2308-2	.062	.084	.066
2308-3	.094	.115	.096
2308-4	.125	.147	.126

2707

2707-X-00-XX-00-00-07-0

Swage mount in .120 hole

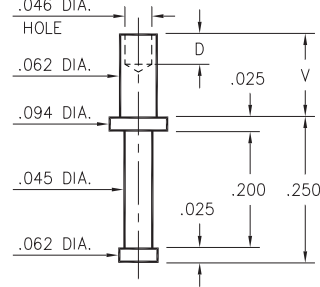


Basic Part Number	Board Thickness	Length V
2707-1	.031	.062
2707-2	.062	.094
2707-3	.094	.125
2707-4	.125	.156

2329

2329-X-00-XX-00-00-07-0

Swage mount in .067 hole

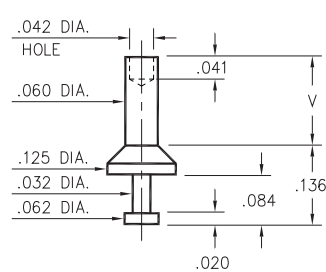


Basic Part Number	Board Thickness	Length V	Depth D
2329-1	.031	.045	.045
2329-2	.062	.094	.062
2329-3	.094	.125	.062
2329-4	.125	.156	.062

2510

2510-X-00-XX-00-00-07-0

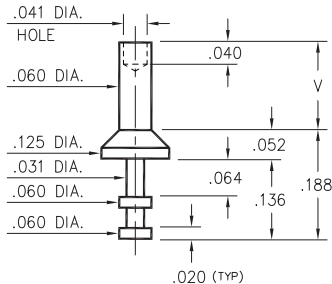
Swage mount in .064 hole



2513

2513-X-00-XX-00-00-07-0

Swage mount in .064 hole



Basic Part Number	Board Thickness	Length V
251X-1	.031	.062
251X-2	.062	.094
251X-3	.094	.125
251X-4	.125	.156

SPECIFICATIONS:

Pin Material: Brass Alloy 360, 1/2 Hard
(Swage pins are annealed)

Dimensions: Inches

Tolerances On: Lengths: $\pm .005$
Diameters: $\pm .002$
Angles: $\pm 2^\circ$



ORDER CODE: XXXX - X - 00 - XX - 00 - 00 - 07 - 0

BASIC PART #

SPECIFY PIN FINISH:

- 01 200 μ " TIN/LEAD OVER NICKEL
- ◆ 80 200 μ " TIN OVER NICKEL (RoHS)
- ◆ 44 300 μ " SILVER OVER COPPER (RoHS)
- 50 300 μ " ELECTRO-SOLDER (60/40 SnPb)

