



Chipsmall Limited consists of a professional team with an average of over 10 year of expertise in the distribution of electronic components. Based in Hongkong, we have already established firm and mutual-benefit business relationships with customers from,Europe,America and south Asia,supplying obsolete and hard-to-find components to meet their specific needs.

With the principle of “Quality Parts,Customers Priority,Honest Operation,and Considerate Service”,our business mainly focus on the distribution of electronic components. Line cards we deal with include Microchip,ALPS,ROHM,Xilinx,Pulse,ON,Everlight and Freescale. Main products comprise IC,Modules,Potentiometer,IC Socket,Relay,Connector.Our parts cover such applications as commercial,industrial, and automotives areas.

We are looking forward to setting up business relationship with you and hope to provide you with the best service and solution. Let us make a better world for our industry!



Contact us

Tel: +86-755-8981 8866 Fax: +86-755-8427 6832

Email & Skype: info@chipsmall.com Web: www.chipsmall.com

Address: A1208, Overseas Decoration Building, #122 Zhenhua RD., Futian, Shenzhen, China



3M™ Fibrlok™ Angle Fiber Splices 2529-AS and 2540-AS

3M™ Fibrlok™ AS series is specifically designed for the splicing of optical fibers in analog video networks, which require excellent optical reflection performance across temperature extremes. Utilizing keyed, angle cleaves, these Fibrlok splices direct reflected light outside of the fiber while maintaining a very low mean insertion loss of < 0.1 dB.

The 3M™ Fibrlok™ II Angle Fiber Splice 2529-AS splices any combination of 250 μm and 900 μm fibers while the 3M™ Fibrlok™ 250 μm Angle Fiber Splice 2540-AS specifically splices 250 μm fiber with a smaller form factor. These angle fiber splices have splice elements that have been optimized for keyed, angle cleaves and have green end caps, so they can be identified after installation. The 2529-AS and 2540-AS splices have the same size and shape as the 3M™ Fibrlok™ II Universal Optical Fiber Splice 2529 and 3M™ Fibrlok™ 250 μm Fiber Splice 2540G splices; respectively, and can be used in the same splice trays.

These splices are ideal for restoration or permanent splice applications, in particular for cable television or Fiber to the Home (FTTH) networks. With field proven, stable Fibrlok technology, these splices can be installed in indoor or outdoor locations where temperatures range from -40 °C to 70 °C (-40 °F to 158 °C) and maintain their excellent reflection performance.

To fabricate an angle mechanical splice, the Fibrlok angle fiber splices are used in conjunction with the 3M™ Fibrlok™ Angle Splice Assembly Tool 2501-AS and the 3M™ Fiber Optic Angle Cleaver 2535. The 3M™ Angle Cleave Kit 2565 contains these tools and all of the fiber preparation tools necessary to terminate angle splices.

The Fibrlok 2529-AS splice and 2540-AS splice can also splice fibers with standard, flat cleaves using the 2501 Fibrlok assembly tool and 3M™ Fibrlok 250 μm Assembly Tool 2504G, respectively. The performance of these splices is comparable to the 3M™ Fibrlok™ II Universal Optical Fiber Splice 2529 and the 3M™ Fibrlok™ 250 μm Fiber Splice 2540G.

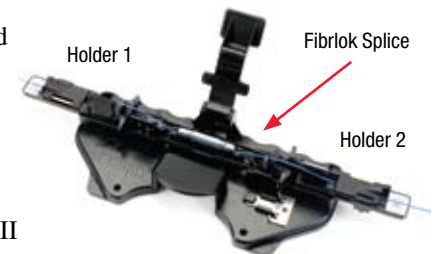
Whether the application is aerial, buried, underground or pedestal; outside plant or inside building; these RoHS compliant* Fibrlok splices will meet the needs for analog video networks.



3M™ Fibrlok™ II Angle Fiber Splice 2529-AS



3M™ Fibrlok™ 250 μm Angle Fiber Splice 2540-AS

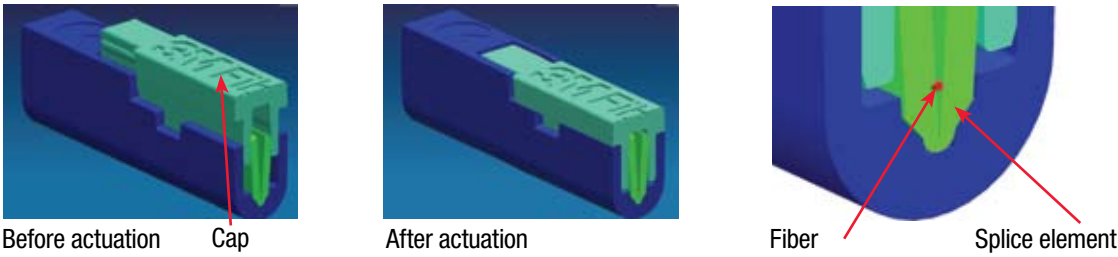


3M™ Fibrlok™ Angle Splice Assembly Tool 2501-AS

Features	Benefits
Keyed, angle cleave splice	Low reflection for excellent analog video performance
Simple assembly tools	Fast, easy installation
Separate cleaver and assembly tool	Same cleaver used for Fibrlok splice and 3M™ No Polish Connector
Long-term reliability	Stable optical performance across temperature extremes

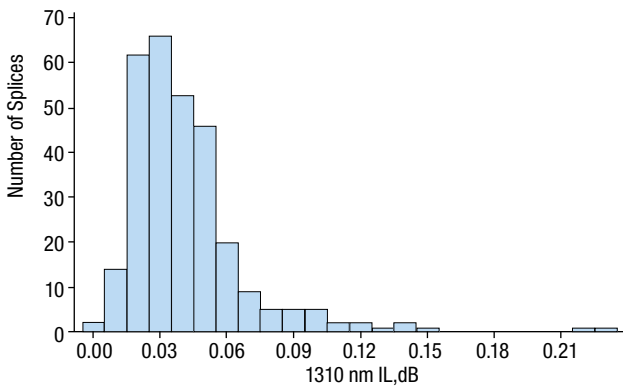


Cross-sectional view of actuated splice

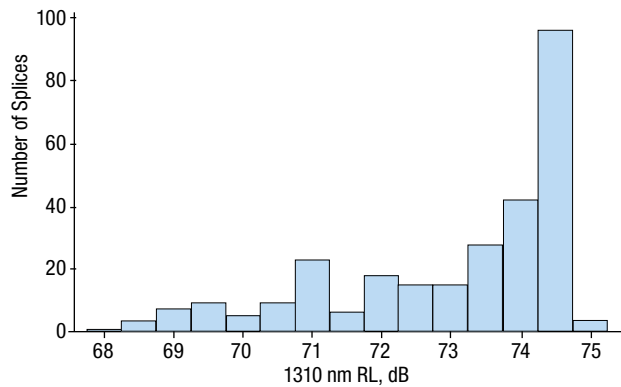


After preparation, the fibers are inserted into the 3M™ Fibrlok™ II Angle Fiber Splice 2529-AS splice element. The assembly tool is then used to close the cap, forcing the clamping and locating surfaces against the fibers and aligning the fibers precisely and permanently in place.

Histogram of Insertion Loss



Histogram of Return Loss



Note: As allowed by IEC 61753-131-3, three samples were eliminated that had insertion loss > 0.25 dB and/or return loss < 60 dB

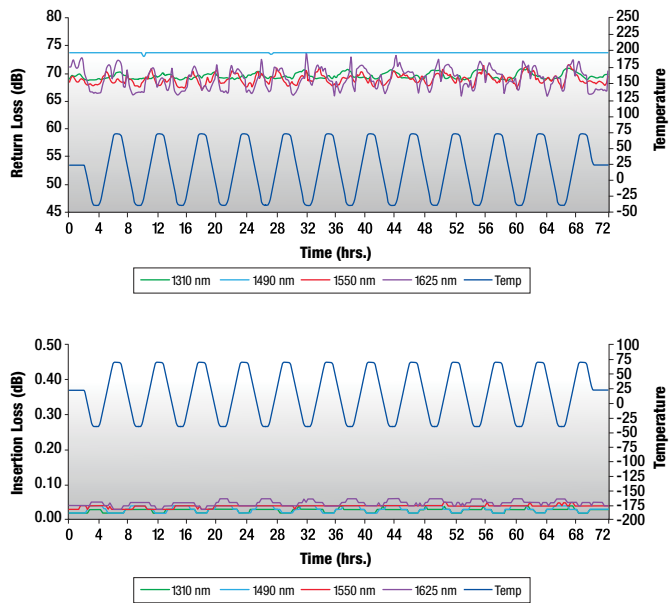
A total of 300 Fibrlok angle fiber splices were tested to IEC 61753-131-3 Ed. 1/CDV “Singlemode Mechanical Fibre Splice for Category U – Uncontrolled Environment”.

The initial insertion loss and return loss were measured with the following configurations with Corning® SMF-28e® fiber.

- 100 3M™ Fibrlok™ 250 μm Angle Fiber Splices 2540-AS with 250 μm fiber
- 100 3M™ Fibrlok™ II Angle Fiber Splices 2529-AS with 250 μm fiber
- 100 3M™ Fibrlok™ II Angle Fiber Splices 2529-AS with 900 μm fiber

As shown in the histograms, the splices exhibited excellent optical performance with an average insertion loss of <0.1 dB and return loss of > 65 dB.

Optical Stability of Fibrlok Splice -40°C to 75°C



3M™ Fibrlok™ Angle Fiber Splice Specifications

Size

2540-AS	4.0 x 4.0 x 40.0 mm (0.16 x 0.16 x 1.42 in.)
2529-AS	3.8 x 6.4 x 38.1 mm (0.15 x 0.25 x 1.50 in.)

Coating diameter

2540-AS	250 µm
2525-AS	250 and 900 µm

Fiber diameter	125 µm
----------------	--------

Wavelengths	1310, 1490, 1550, 1625 nm
-------------	---------------------------

Insertion loss	< 0.1 dB typical < 0.25 dB max per IEC 61753-131-3
----------------	---

Return loss	65 dB typical at room temperature > 60 dB for -40 °C to 70 °C (-40 °F to 158 °F) per IEC 61753-131-3
-------------	---

Operating temperature	-40 °C to 70 °C (-40 °F to 158 °F)
-----------------------	------------------------------------

Vibration	IEC 61300-2-1, 10-55 Hz in all 3 axes
-----------	---------------------------------------

Torsion	IEC 61300-2-5, Twist fiber +/- 180° for 10 cycles at 0.2 m (8 in.) from splice
---------	--

Fiber retention	IEC 61300-2-4, > 5N (1.1 lbf) min and > 10 N (2.2 lbf) typical
-----------------	--

Dust – laminar flow	IEC 61300-2-27, 10 minutes at 35 °C (95 °F)
---------------------	---

Salt mist	IEC 61300-2-26, 96 hours at 35 °C (95 °F) with 5% salt solution
-----------	---

Material	Engineering thermoplastic with aluminum alloy element; UL 94, V-0 rating
----------	--

Fungus resistance	ASTM G-21-70; rating 0
-------------------	------------------------

Index Matching Gel Performance

Inside the Fibrlok element is a factory installed, index matching gel which is designed to minimize optical loss at the splice interface. The gel has shown exceptional reliability, even with testing that is more stringent than industry standards. For example, gel samples were aged in bulk at 115 °C (239 °F) for seven months and then Fibrlok splices assembled with this gel. All ten samples had insertion loss <0.1 dB. To determine extended splice reliability with gel, 16 Fibrlok splices were exposed to environmental conditions of 85 °C (185 °F) and 85% relative humidity for 8,812 hours (> 1 year). The insertion loss for all the samples remained <0.25 dB. The gel even resists water intrusion into the splice. Thirty Fibrlok splices were submerged in distilled water for 30 months and all of the splices had insertion loss <0.2 dB after the test. This testing, along with 20 years experience with more than 10 million Fibrloks deployed, confirms the index matching gel has outstanding long-term performance.

Keyed, Angle Cleave Splices

The 3M™ Fiber Optic Angle Cleaver 2535 precisely forms a 7° cleave on the fiber end face. The fiber holder in the 3M™ Fibrlok™ Angle Splice Assembly Tool maintains the fiber angle orientation. The fibers in Holder 1 and Holder 2 are cleaved exactly in the same manner and the fiber holders automatically key the angle cleaves in the splice as shown below.

Angle Cleave Fiber Holder 1



Angle Cleave Fiber Holder 2



Keyed, Angle Cleave Splice

Ordering Information

Product Number	Product Description	Stock Number	Packaging
2529-AS	3M™ Fibrlok™ II Angle Fiber Splice	80-6113-2737-2	60/package
2529-AS/B	3M™ Fibrlok™ II Angle Fiber Splice Bulk Pack	80-6113-2991-5	1,000/package
2540-AS	3M™ Fibrlok™ 250µm Angle Fiber Splice	JE-4200-8435-0	60/package
2501-AS	3M™ Fibrlok™ Angle Splice Assembly Tool	80-6113-2424-7	1/package
2535	3M™ Fiber Optic Angle Cleaver	80-6113-2423-9	1/package
2565	3M™ Fiber Optic Angle Cleaver Kit	80-6113-2508-7	1/package



Angle cleave fiber using 3M™ Fiber Optic Angle Cleaver 2535

3M™ Fiber Optic Angle Cleaver Kit 2565 includes 3M™ Fiber Optic Angle Cleaver 2535, 3M™ Fibrlok™ Angle Splice Assembly Tool 2501-AS and all tools necessary for Fibrlok angle splice

RoHS Compliant 2002/95/EC means that the product or part ("Product") does not contain any of the substances in excess of the maximum concentration values in EU Directive 2002/95/EC, as amended by Commission Decision 2005/618/EC, unless the substance is in an application that is exempt under EU RoHS. This information represents 3M's knowledge and belief, which may be based in whole or in part on information provided by third party suppliers to 3M.

3M and Fibrlok are trademarks of 3M Company. All other trademarks herein are the property of their respective owners.

Important Notice

All statements, technical information, and recommendations related to 3M's products are based on information believed to be reliable, but the accuracy or completeness is not guaranteed. Before using this product, you must evaluate it and determine if it is suitable for your intended application. You assume all risks and liability associated with such use. Any statements related to the product which are not contained in 3M's current publications, or any contrary statements contained on your purchase order shall have no force or effect unless expressly agreed upon, in writing, by an authorized officer of 3M.

Warranty; Limited Remedy; Limited Liability.

This product will be free from defects in material and manufacture for a period of 12 months from the time of purchase. **3M MAKES NO OTHER WARRANTIES INCLUDING, BUT NOT LIMITED TO, ANY IMPLIED WARRANTY OF MERCHANTABILITY OR FITNESS FOR A PARTICULAR PURPOSE.** If this product is defective within the warranty period stated above, your exclusive remedy shall be, at 3M's option, to replace or repair the 3M product or refund the purchase price of the 3M product. **Except where prohibited by law, 3M will not be liable for any loss or damage arising from this 3M product, whether indirect, special, incidental or consequential regardless of the legal theory asserted.**



Communications Markets Division 3M Telecommunications

6801 River Place Blvd.
Austin, TX 78726-9000
800/426 8688
Fax 800/626 0329
www.3MTelecommunications

Please recycle. Printed in USA.
© 3M 2008. All rights reserved.
80-6113-2837-0