



Chipsmall Limited consists of a professional team with an average of over 10 year of expertise in the distribution of electronic components. Based in Hongkong, we have already established firm and mutual-benefit business relationships with customers from,Europe,America and south Asia,supplying obsolete and hard-to-find components to meet their specific needs.

With the principle of “Quality Parts,Customers Priority,Honest Operation,and Considerate Service”,our business mainly focus on the distribution of electronic components. Line cards we deal with include Microchip,ALPS,ROHM,Xilinx,Pulse,ON,Everlight and Freescale. Main products comprise IC,Modules,Potentiometer,IC Socket,Relay,Connector.Our parts cover such applications as commercial,industrial, and automotives areas.

We are looking forward to setting up business relationship with you and hope to provide you with the best service and solution. Let us make a better world for our industry!



## Contact us

Tel: +86-755-8981 8866 Fax: +86-755-8427 6832

Email & Skype: [info@chipsmall.com](mailto:info@chipsmall.com) Web: [www.chipsmall.com](http://www.chipsmall.com)

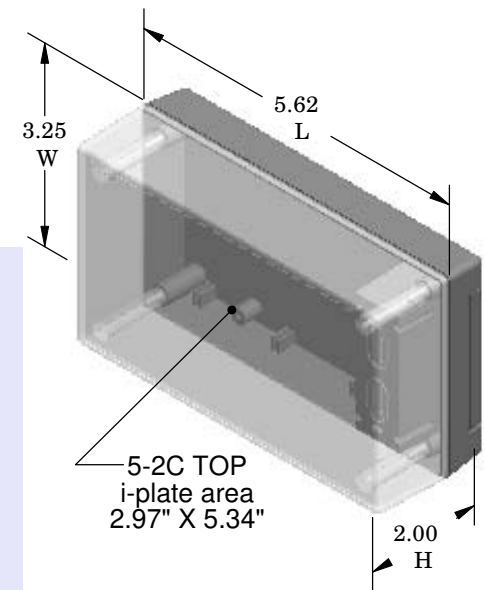
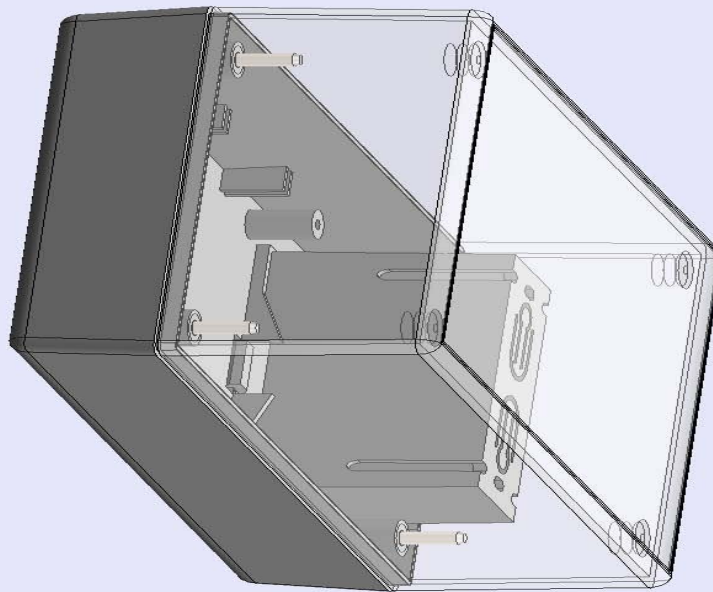
Address: A1208, Overseas Decoration Building, #122 Zhenhua RD., Futian, Shenzhen, China



# SERPAC 252C (3D exploded)

Electronic Enclosures

- Click on image to show toolbar. Use ►|| to Play/Pause Animation\*.
- Left click and drag on image to move 3D model.



PART NO.	DESCRIPTION (Included)	ACCESSORIES (Optional) More available; see website	
PART NO.	DESCRIPTION	PART NO.	DESCRIPTION
5-2C	TOP		
25	BOTTOM	359	Prototype grid board (bottom)
1025	Battery Cover	459	Prototype clad board (bottom)
6005	#4X3/8" Self tapping (4)	50	Non-skid feet
		6004	Screw for circuit board

a) Zoom in & out with center wheel.

b) Pause at any moment to view and or print views.

c) Change the views to ortho and section views if needed from the Views pull down menu.

d) Explore options included in the tool bar like: Views, Transparency of model, Lighting type, etc.

\*(To have full interaction with the animated PDF files, please use free Adobe Reader 9 or newer version.)

Notes: (Enclosure weight 0.31 lb / 142 gm)

1) Enclosure meets or exceeds IP40 and NEMA 1

2) Circuit Board drawing can be download at:

<http://www.serpac.com/Accessories/CircuitBoard/drawings/359-459-cbg.pdf>

3) All components are RoHS Compliant.

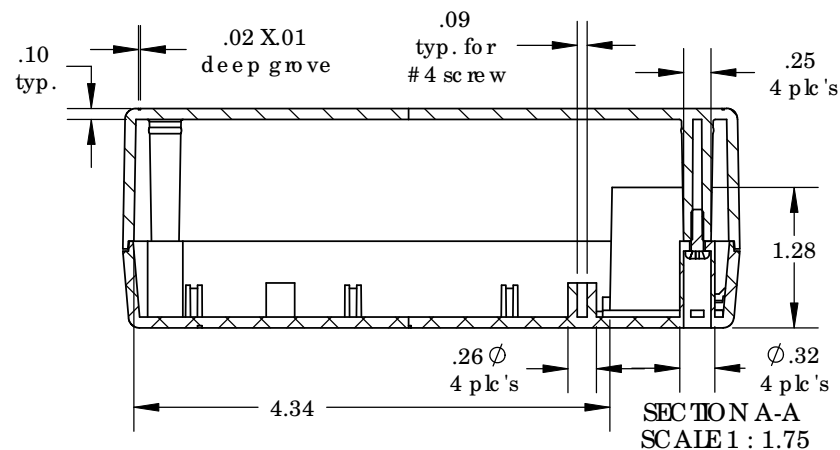
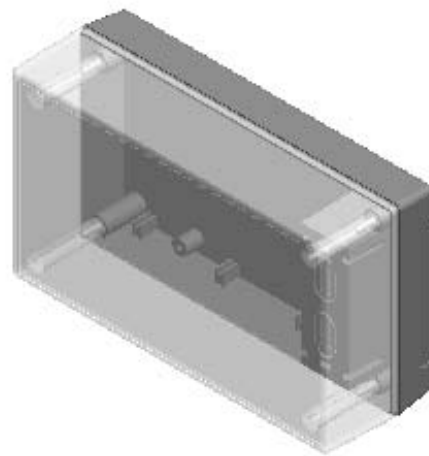
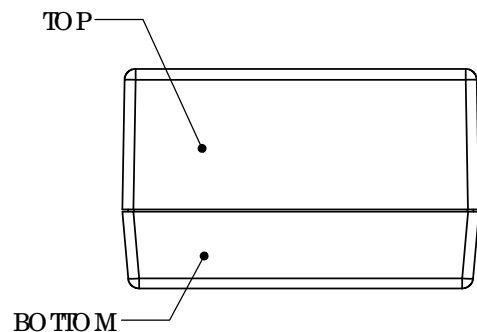
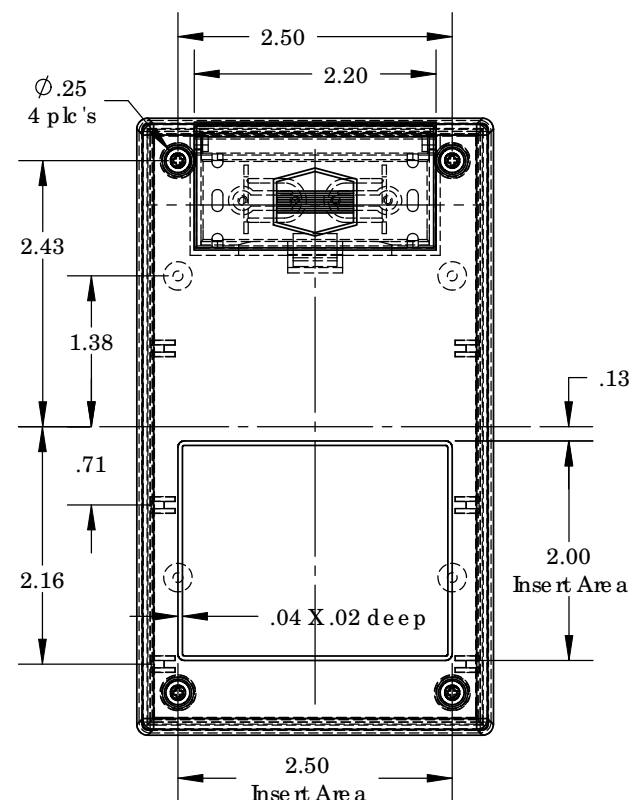
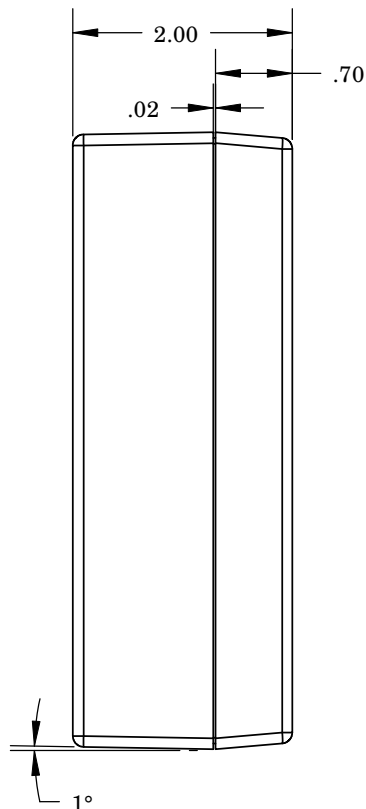
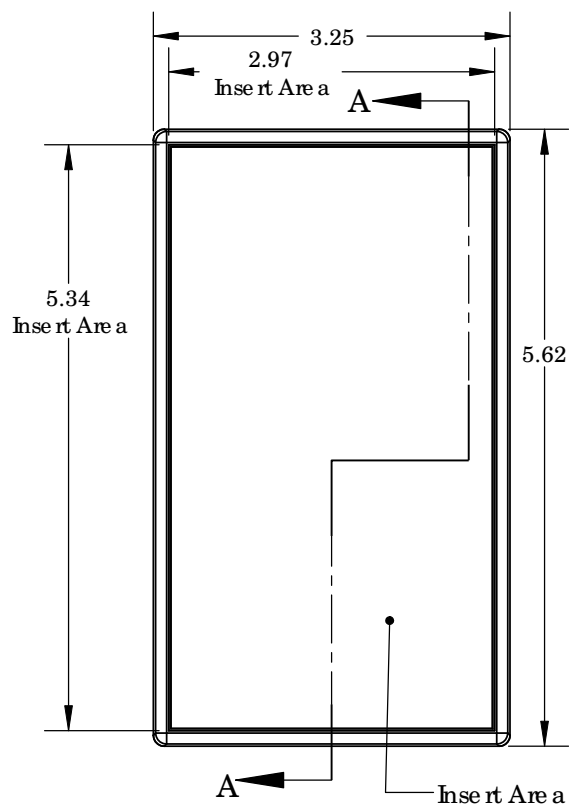
ALL DIMENSIONS ARE  $\pm .010"$  5/13/10 (1 of 2)  
2009 Wright Ave. La Verne, CA 91750

Ph. (626) 331-0517 Ex. (626) 331-8584 [serpac.com](http://serpac.com)



# SERPAC 252C (user print)

Electronic Enclosures



PART NO.	DESCRIPTION (Included)	ACCESSORIES (Optional) More available; see website
5-2C	TOP	PART NO. DESCRIPTION
25	BOTTOM	359 Prototype grid board (bottom)
1025	Battery Cover	459 Prototype clad board (bottom)
6005	#4 X 3/8" self tapping (4)	50 Non-skid feet
		6004 Screw for circuit board

Notes: (Enclosure weight 0.31 lb / 142 gm)  
 1) Enclosure meets or exceeds IP40 and NEMA 1  
 2) Circuit Board drawing can be download at:  
<http://www.serpac.com/Accessories/CircuitBoard/drawings/359-459-cbg.pdf>  
 3) All components are RoHS Compliant.

ALL DIMENSIONS ARE ±.010" 5/13/10 (2 of 2)  
 2009 Wright Ave. La Verne, CA 91750

Ph. (626) 331-0517 Ex. (626) 331-8584 [www.serpac.com](http://www.serpac.com)