



Chipsmall Limited consists of a professional team with an average of over 10 year of expertise in the distribution of electronic components. Based in Hongkong, we have already established firm and mutual-benefit business relationships with customers from,Europe,America and south Asia,supplying obsolete and hard-to-find components to meet their specific needs.

With the principle of “Quality Parts,Customers Priority,Honest Operation,and Considerate Service”,our business mainly focus on the distribution of electronic components. Line cards we deal with include Microchip,ALPS,ROHM,Xilinx,Pulse,ON,Everlight and Freescale. Main products comprise IC,Modules,Potentiometer,IC Socket,Relay,Connector.Our parts cover such applications as commercial,industrial, and automotives areas.

We are looking forward to setting up business relationship with you and hope to provide you with the best service and solution. Let us make a better world for our industry!



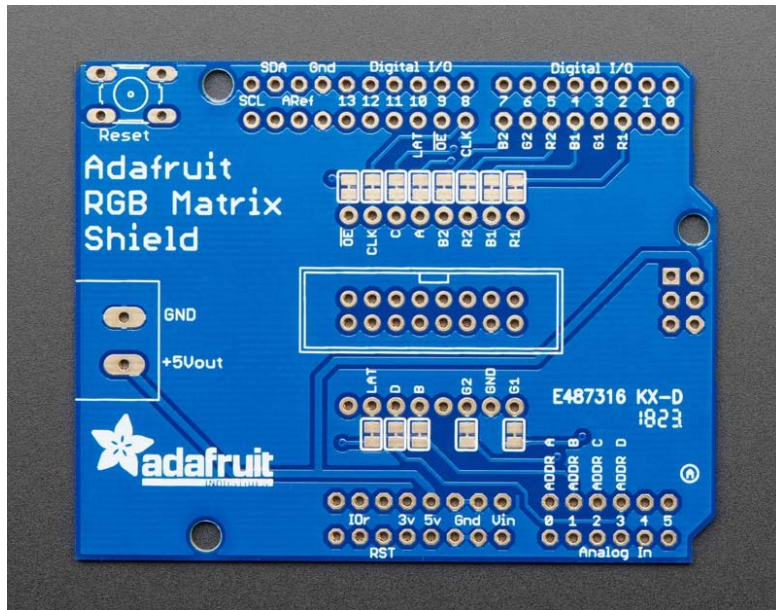
Contact us

Tel: +86-755-8981 8866 Fax: +86-755-8427 6832

Email & Skype: info@chipsmall.com Web: www.chipsmall.com

Address: A1208, Overseas Decoration Building, #122 Zhenhua RD., Futian, Shenzhen, China





Adafruit RGB Matrix Shield for Arduino

PRODUCT ID: 2601

Our RGB matrices are dazzling, with their hundreds or even *thousands* of individual RGB LEDs. Compared to NeoPixels, they've got great density, power usage and the price-per-LED can't be beat. But...(isn't there always a *but*?) You need to use our special library to control them and they require a bunch of wires to be plugged in. Tougher than a single-wire connection for sure.

If you've got an Arduino-compatible board, with an ATmega328p chip (like our Metro 328) or SAMD21 (like the Metro M0) or even SAMD51 (like our Metro M4) this shield will make usage a snap! A little light soldering to attach the headers, connector and terminal block and you're ready to rock. Plug it onto your microcontroller board, and you'll be able to attach any RGB matrix with ease. This shield just takes care of the wiring for you!

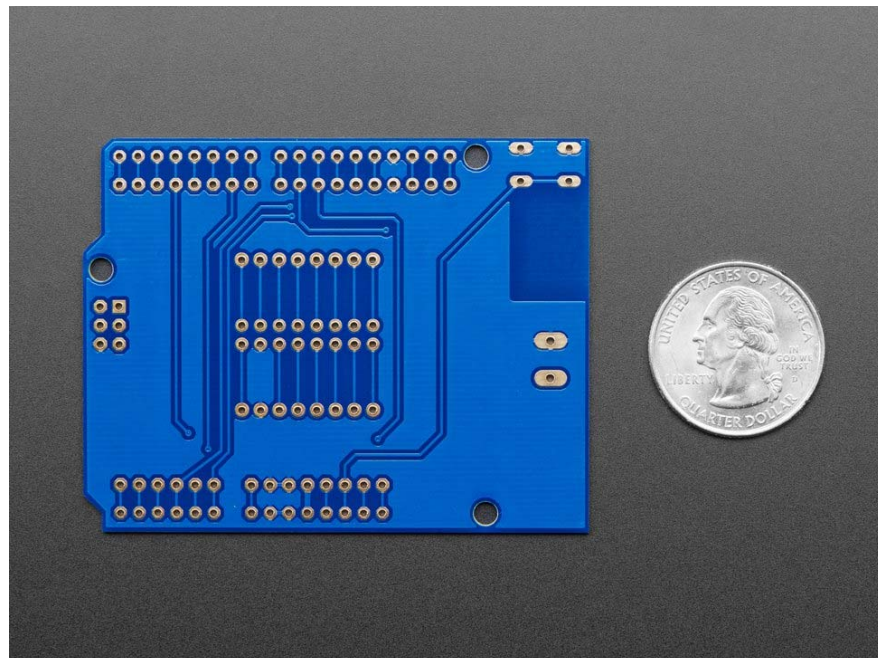
For 800mA or less power usage on the matrix you can even 'borrow' the 5V power from the Arduino's regulator. This isn't good for projects where you have a lot of LEDs on at once but for scrolling text and light LED usage it will make wiring even easier because you don't need a separate power adapter. Of course, if you need 1 Amp or more, just use the 2x8 connector for data and use a separate 5V 2A or 5V 4A wall adapter directly to the panel.

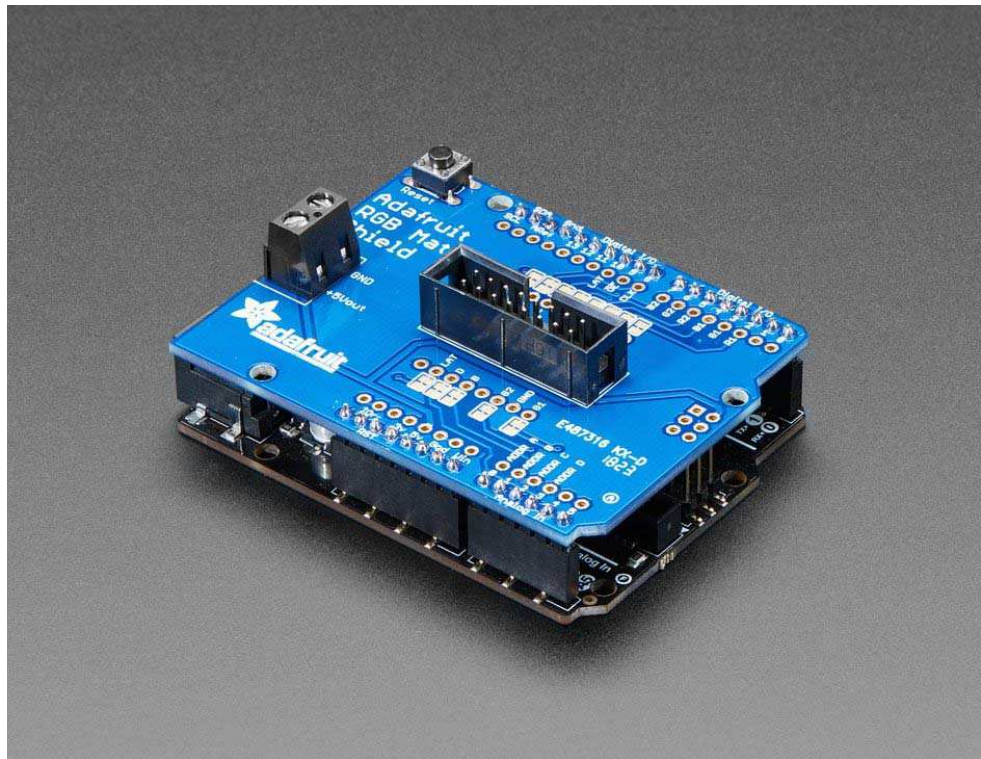
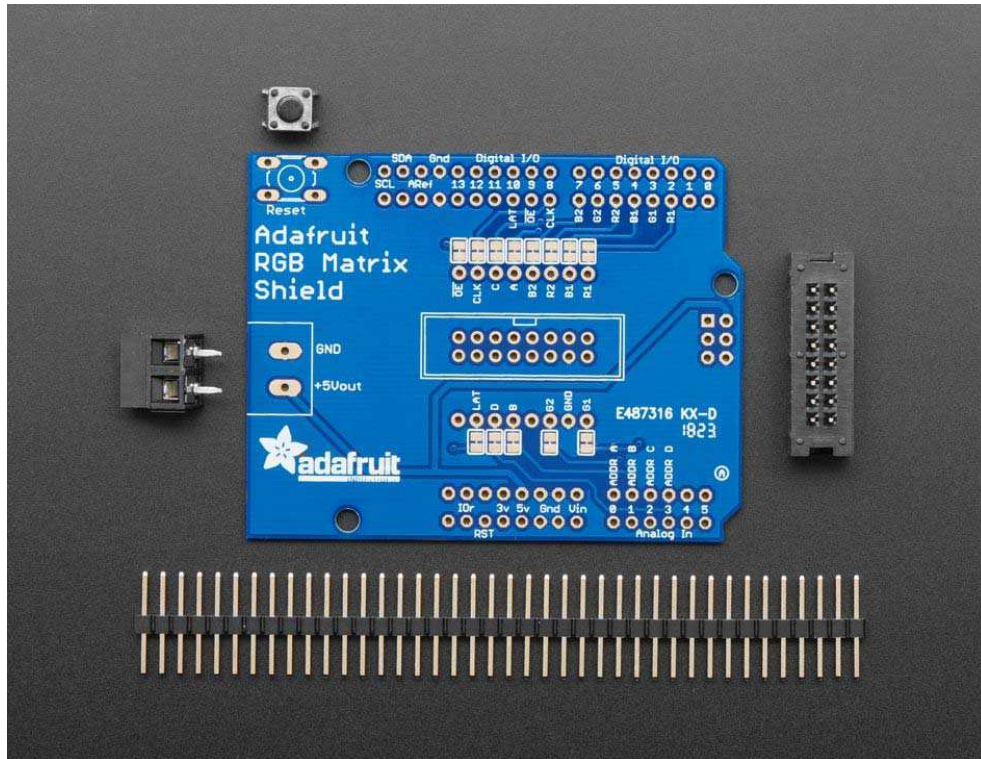
Note that this shield is just a wiring adapter, if you have a Metro 328 you can only use 16x32 or possibly 32x32 matrices before you run out of RAM. For big panels, use a Metro M0 or M4 – those will work best thanks to their enormous RAM.

Please note our Arduino library only supports 32-pixel tall matrices, so don't try using a 64x64 matrix, it doesn't work!

TECHNICAL DETAILS

Shield Dimensions (unassembled): 68.5 x 53.2 x 1.6mm





<https://www.adafruit.com/product/2601> 6-25-18