



Chipsmall Limited consists of a professional team with an average of over 10 year of expertise in the distribution of electronic components. Based in Hongkong, we have already established firm and mutual-benefit business relationships with customers from,Europe,America and south Asia,supplying obsolete and hard-to-find components to meet their specific needs.

With the principle of “Quality Parts,Customers Priority,Honest Operation,and Considerate Service”,our business mainly focus on the distribution of electronic components. Line cards we deal with include Microchip,ALPS,ROHM,Xilinx,Pulse,ON,Everlight and Freescale. Main products comprise IC,Modules,Potentiometer,IC Socket,Relay,Connector.Our parts cover such applications as commercial,industrial, and automotives areas.

We are looking forward to setting up business relationship with you and hope to provide you with the best service and solution. Let us make a better world for our industry!



Contact us

Tel: +86-755-8981 8866 Fax: +86-755-8427 6832

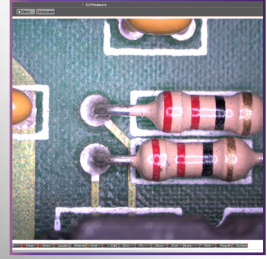
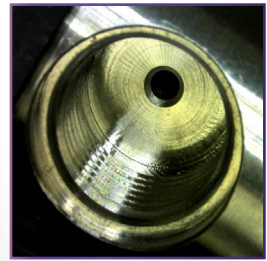
Email & Skype: info@chipsmall.com Web: www.chipsmall.com

Address: A1208, Overseas Decoration Building, #122 Zhenhua RD., Futian, Shenzhen, China





AVEN



Mighty Cam USB 5M CMOS Camera With ezMeasure Software

The Mighty Cam is a new generation digital color camera designed for scientific microscopy, imaging, documentation, reporting and analysis. Advanced chip technology guarantees excellent color reproduction with a fast frame rate. The advanced ezMeasure software offers an intuitive user interface for measurement, annotation, image analysis, etc.

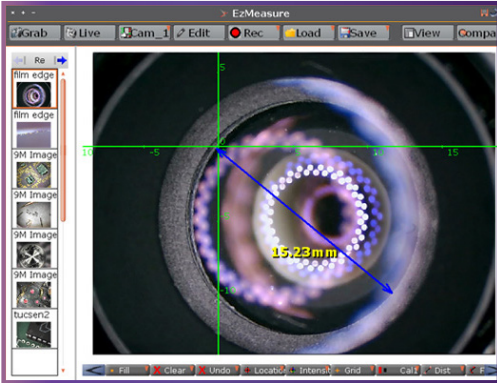
Features

- 5M CMOS Sensor (2592 x 1944)
- Easy Plug and Play USB 2.0 Interface
- Compact and Light Weight
- Versatile C/CS Lenses Mount

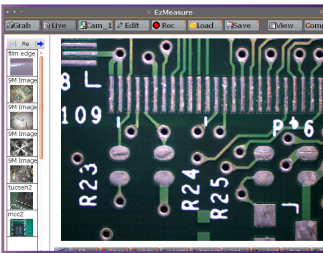
SENSOR SIZE	1/2 .5"
SENSOR TYPE	CMOS
FRAME RATE	6fps (2592 x 1944)
MEGAPIXEL	5 MP (2592 x 1944)
PIXEL SIZE	2.2 µm
WHITE BALANCE	Automatic/Manual
EXPOSURE	Automatic/Manual
COLOR	RGB
MOUNT	C/CS Mount
RESOLUTION	2592 x 1944
OUTPUT	USB 2.0
PRODUCT WIDTH	45 mm / 1.77"
PRODUCT HEIGHT	47 mm / 1.85"
PRODUCT DEPTH	56 mm / 2.20"
MOUNTING PLATE	Allows mounting to a 1/4" screw
TYPE OF SHUTTER	Rolling
PACKAGE CONTENTS	Camera, USB 2.0 Cable, Ring for C Mount Lens, Lens Cap Cover, and ezMeasure Software

26100-243	Mighty Cam USB 5M CMOS Camera with ezMeasure Software
------------------	---

Measure Software provided with the Mighty Cam

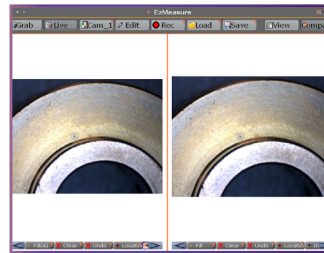


ezMeasure® allows you to measure, annotate, and analyze your images with just a few clicks. Create written reports that include the raw data, plus the images involved. EZ Measure Software allows you to view images from a camera or a saved folder. These can be viewed, replayed and analyzed. Recent projects are easily accessible with thumbprint menu.



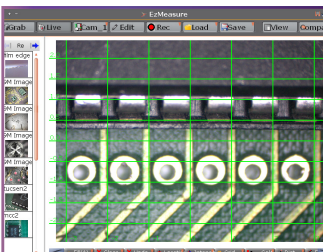
Capture High Quality Images

Create enhanced still photos or record a live video stream for play back.



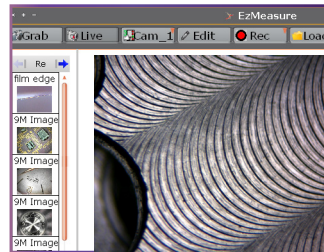
Simultaneous Live Views

Use two cameras on same work station for side by side live views.



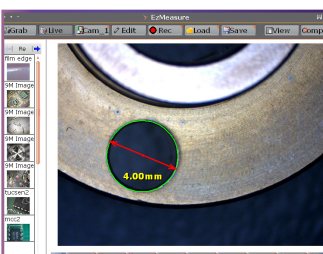
Grid Feature

Locate and compare with ease, with multiple grid views.



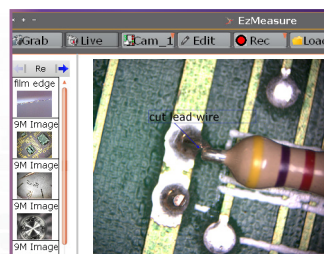
Customize the Layout

Set the layout to your personal preferences and save your unique settings for future use.



Measurement Tools

- Set the image pixels to real units eg. mm or inches.
- Record and save multiple calibration settings.
- Measure the distances between different points, or edges.



Text Button

Allows annotations directly onto the screen. The user has the ability to adjust the size and the appearance of the text.

Additional Features

- Fill Mode Tool determines the image size: Fit-to-Fill the entire viewing area, Zoomed in, or Preserve the Original aspect ratio.
- Location Button provides a cursor for the X,Y,Z-axis coordinates. Moving the Cursor with the mouse updates the coordinates.
- And many many more ...