



Chipsmall Limited consists of a professional team with an average of over 10 year of expertise in the distribution of electronic components. Based in Hongkong, we have already established firm and mutual-benefit business relationships with customers from,Europe,America and south Asia,supplying obsolete and hard-to-find components to meet their specific needs.

With the principle of “Quality Parts,Customers Priority,Honest Operation,and Considerate Service”,our business mainly focus on the distribution of electronic components. Line cards we deal with include Microchip,ALPS,ROHM,Xilinx,Pulse,ON,Everlight and Freescale. Main products comprise IC,Modules,Potentiometer,IC Socket,Relay,Connector.Our parts cover such applications as commercial,industrial, and automotives areas.

We are looking forward to setting up business relationship with you and hope to provide you with the best service and solution. Let us make a better world for our industry!



Contact us

Tel: +86-755-8981 8866 Fax: +86-755-8427 6832

Email & Skype: info@chipsmall.com Web: www.chipsmall.com

Address: A1208, Overseas Decoration Building, #122 Zhenhua RD., Futian, Shenzhen, China



QUARTER TURN KNOB LOCK (PLASTIC)



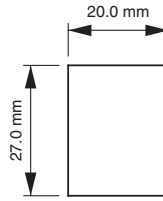
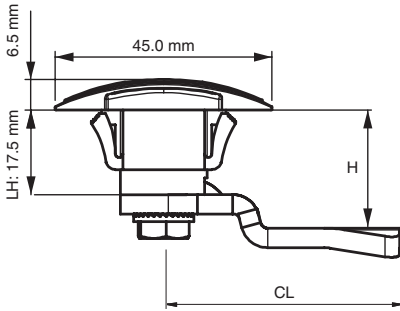
*Example with cam. Cam sold separately.

Specifications

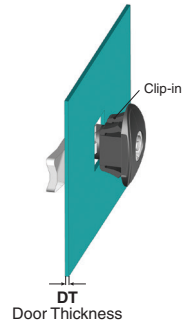
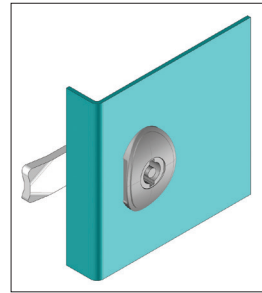
- Material:
 - Housing: Polyamide DIN-EN ISO 1043-1 PA6 GFR 30
 - Driver: Zinc Alloy (Zamak) or PA6 GFR 30
 - Cam: Steel or Plastic

Features

- Clip install for easy assembly
- Mounting nut not required
- Special 20 mm x 26 mm cut out
- There is no IP 65 version of this lock
- Can be used for panel thickness 0.8 mm to 1.8 mm
- Applications: Electric panels, machinery covers



Cut Out



Driver/Head Style

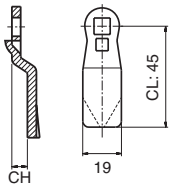
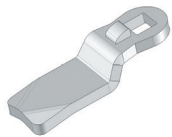


3mm Double Bit

Item Number	Driver	Cam
Nylon / Black		
060111300	3mm Double Bit	Select Cam Below

Item Number	Driver / Head Style	Cam
Zinc Alloy / Nylon		
2612000700	Locking	Select Cam Below
26120201300	3mm Double Bit	Select Cam Below

Steel Cam

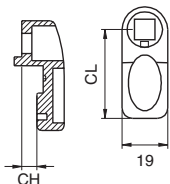


Material: Steel
Finish: Zinc plated
Thickness: 4 mm

Item Number	CH (mm)	CL (mm)	H (mm)
30403033	0	45	17.5
30403439	1	45	18.5
30403159	2	45	19.5
30403063	3	45	20.5
30403149	4	45	21.5
30403160	6	45	23.5
30403161	8	45	25.5
30403162	10	45	27.5
30403045	12	45	29.5
30403163	14	45	31.5
30403151	16	45	33.5
30403165	18	45	35.5
30403166	20	45	37.5

Item Number	CH (mm)	CL (mm)	H (mm)
30403167	22	45	39.5
30403168	24	45	41.5
30403169	-2	45	15.5
30403170	-4	45	13.5
30403171	-6	45	11.5
30403172	-8	45	9.5
30403173	-10	45	7.5
30403174	-12	45	5.5
30403175	-14	45	3.5
30402005	6	35	-
30402008	4	45	-
30402013	-4	45	-

Nylon Cam



Item Number	CH (mm)	CL (mm)	H (mm)
30402004	0	35	17.5
30402011	0	25	17.5
30402005	6	35	23.5
30402008	4	45	21.5
30402013	-4	45	13.5