



Chipsmall Limited consists of a professional team with an average of over 10 year of expertise in the distribution of electronic components. Based in Hongkong, we have already established firm and mutual-benefit business relationships with customers from,Europe,America and south Asia,supplying obsolete and hard-to-find components to meet their specific needs.

With the principle of "Quality Parts,Customers Priority,Honest Operation,and Considerate Service",our business mainly focus on the distribution of electronic components. Line cards we deal with include Microchip,ALPS,ROHM,Xilinx,Pulse,ON,Everlight and Freescale. Main products comprise IC,Modules,Potentiometer,IC Socket,Relay,Connector.Our parts cover such applications as commercial,industrial, and automotives areas.

We are looking forward to setting up business relationship with you and hope to provide you with the best service and solution. Let us make a better world for our industry!



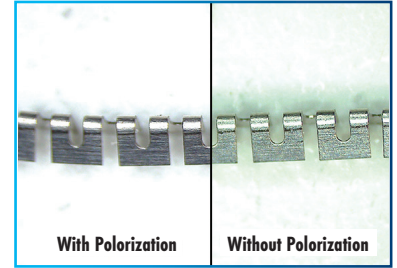
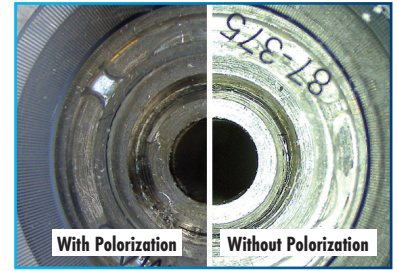
Contact us

Tel: +86-755-8981 8866 Fax: +86-755-8427 6832

Email & Skype: info@chipsmall.com Web: www.chipsmall.com

Address: A1208, Overseas Decoration Building, #122 Zhenhua RD., Futian, Shenzhen, China





LED Ring Light with Adjustable Polarizer

Reduce The Glare From Shiny or Reflective Objects

Aven's LED Ring Light with Adjustable Polarizer significantly reduces the glare from shiny objects, allowing operators to see details that could otherwise be obscured or washed out. Features a polarizer dial with reference markers to adjust the level of polarization. Includes a tinted glass analyzer insert for enhanced polarization effects.

Aven's LED Ring Light with Adjustable Polarizer features a built-in brightness dial for precise illumination control of 120 LEDs. Compatible with all Aven's stereo zoom microscopes.

Features

- Ideal for reducing glare from shiny/reflective objects
- 120 adjustable ultra bright SMD LEDs
- Polarizer dial with reference markers for precise adjustments
- Includes a tinted glass analyzer insert for enhanced polarization effects

Ultra Bright
120
Adjustable
SMD LEDs

Versatile
Adjustable
Polarizer
Dial

Eliminates Reflection
Reduces
Excess
Glare

Also Featured in Two Microscope Systems



26800B-373-3



26800B-373-2

LED Ring Light with Adjustable Polarizer	
LED QUANTITY	120pcs
INPUT VOTAGE	DC24V/500mA
DRIVE METHOD	Constant voltage
LIGHT INTENSITY	0~100%
ENVIRONMENT TEMPERATURE & HUMIDITY	0~40° / 20~80%RH
LIGHT COLOR	White
MINIMUM LED LIFETIME	20,000 hours
WORKING DISTANCE	40mm~120mm / 1.6in~4.7in
DIMENSIONS (MM/IN)	O.D.90mm (3.5in) x I. D.35mm (1.4in) x Height: 33mm (1.3in) x Length: 99mm (3.9in)
FITTING DIAMETER	62mm / 2.44in
EMITTING HOLE DIAMETER	35mm / 1.4in
PACKAGE CONTENTS	LED Ring Light with Adjustable Polarizer, tinted glass analyzer, power supply, user guide

Part #	Description
26200B-222	LED Ring Light with Adjustable Polarizer