



Chipsmall Limited consists of a professional team with an average of over 10 year of expertise in the distribution of electronic components. Based in Hongkong, we have already established firm and mutual-benefit business relationships with customers from,Europe,America and south Asia,supplying obsolete and hard-to-find components to meet their specific needs.

With the principle of “Quality Parts,Customers Priority,Honest Operation,and Considerate Service”,our business mainly focus on the distribution of electronic components. Line cards we deal with include Microchip,ALPS,ROHM,Xilinx,Pulse,ON,Everlight and Freescale. Main products comprise IC,Modules,Potentiometer,IC Socket,Relay,Connector.Our parts cover such applications as commercial,industrial, and automotives areas.

We are looking forward to setting up business relationship with you and hope to provide you with the best service and solution. Let us make a better world for our industry!



Contact us

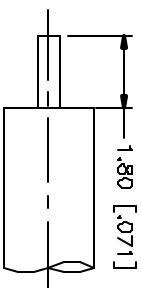
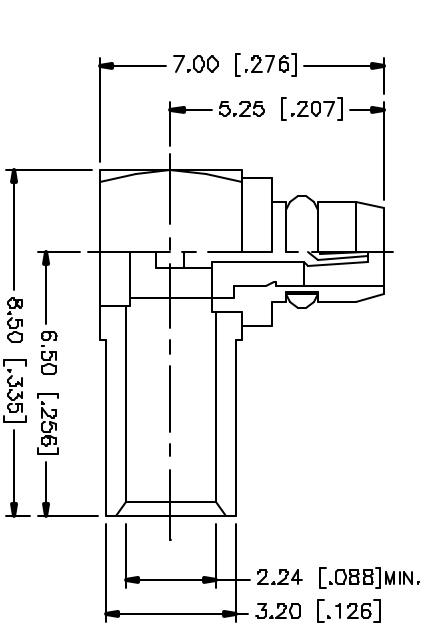
Tel: +86-755-8981 8866 Fax: +86-755-8427 6832

Email & Skype: info@chipsmall.com Web: www.chipsmall.com

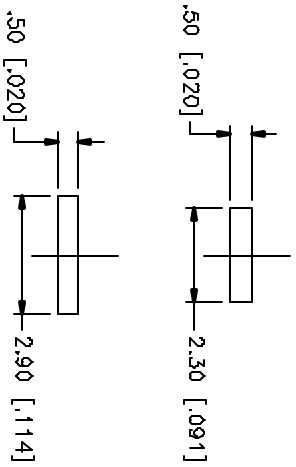
Address: A1208, Overseas Decoration Building, #122 Zhenhua RD., Futian, Shenzhen, China



REV.	DATE	DESCRIPTION
A	05/01/04	UPDATE DRAWING FORMAT



RECOMMENDED CABLE STRIPPING DIM'S.



NOTE:

1. CONTACT PIN TO SOLDER

B	DESCRIPTION	MATERIAL	FINISH	QTY	DO NOT SCALE DRAWING	APPROVALS	DATE	PART DESCRIPTION	DWG. NO.	REV.	SIZE	SCALE
6	COVER	BRASS	GOLD	1		DRWN	G.R.S.	05/01/04	262113.DWG	A	A	NA
5	INSULATOR	TEFLON	NATURAL	1		CHECKED						
4	RETAINER RING	BER. COPPER	GOLD	1		DESIGNED						
3	CONTACT PIN	BRASS	GOLD	1		DRIFT	1 OF 1					
2	INSULATOR	TEFLON	NATURAL	1								
1	BODY	BRASS	GOLD	1								
						<p>UNLESS OTHERWISE SPECIFIED DIMENSIONS ARE IN MILLIMETERS AND DECIMALS IN 1/16" ARE IN INCHES AND FOR DIMENSIONS REFER TO THIS NOTE FOR DIMENSIONAL PRECISION DATA.</p> <p>UNLESS OTHERWISE SPECIFIED TOLERANCES FOR MILLIMETERS ARE: 0.5 - .30mm ± 0.20mm 8 - 30mm ± 0.40mm 30 - 120mm ± 0.50mm</p> <p>UNLESS OTHERWISE SPECIFIED TOLERANCES FOR INCHES ARE: .020 - .315 = ± 0.007" .315 - 1.180 = ± 0.015" 1.180 - 4.724 = ± 0.020"</p>						
						<p>Amphenol Connex</p> <p>MMCX R/A SEMI-RIGID PLUG (FOR .085", .086")</p> <p>262113</p>						