



Chipsmall Limited consists of a professional team with an average of over 10 year of expertise in the distribution of electronic components. Based in Hongkong, we have already established firm and mutual-benefit business relationships with customers from,Europe,America and south Asia,supplying obsolete and hard-to-find components to meet their specific needs.

With the principle of "Quality Parts,Customers Priority,Honest Operation,and Considerate Service",our business mainly focus on the distribution of electronic components. Line cards we deal with include Microchip,ALPS,ROHM,Xilinx,Pulse,ON,Everlight and Freescale. Main products comprise IC,Modules,Potentiometer,IC Socket,Relay,Connector.Our parts cover such applications as commercial,industrial, and automotives areas.

We are looking forward to setting up business relationship with you and hope to provide you with the best service and solution. Let us make a better world for our industry!



Contact us

Tel: +86-755-8981 8866 Fax: +86-755-8427 6832

Email & Skype: info@chipsmall.com Web: www.chipsmall.com

Address: A1208, Overseas Decoration Building, #122 Zhenhua RD., Futian, Shenzhen, China



AMPAMP INCORPORATED
Harrisburg, Pa. 17105

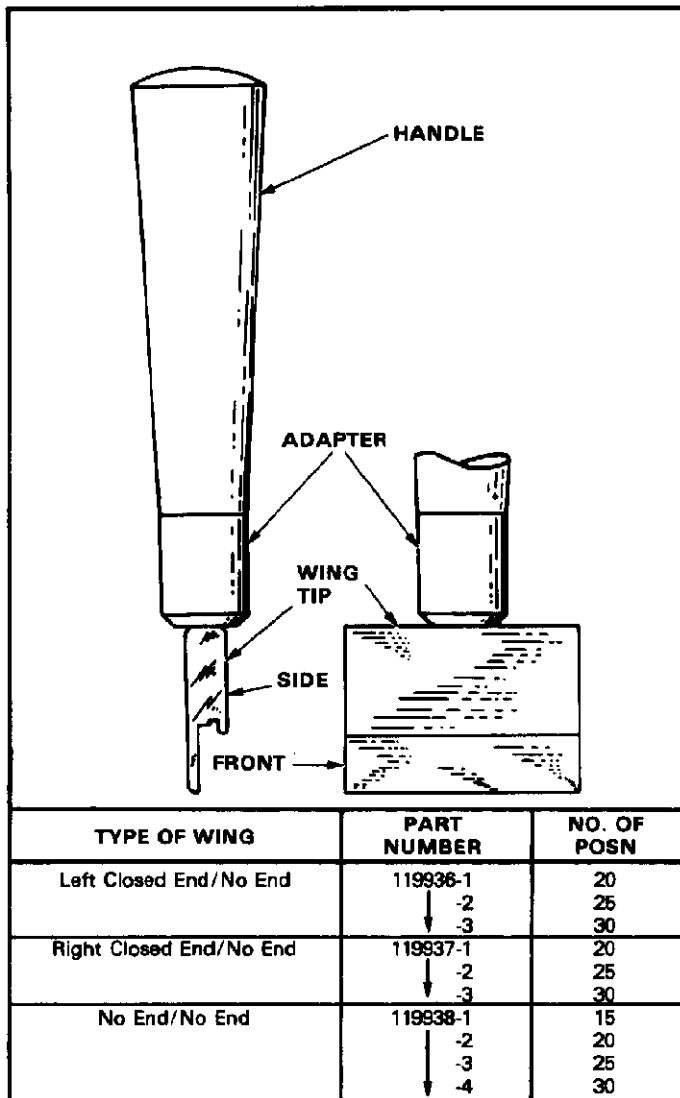
**AMP★ HOUSING WING
REMOVAL AND REPLACEMENT TOOL 266233-1
FOR USE WITH
ZERO INSERTION FORCE (ZIF)
LINEAR CARD-EDGE CONNECTORS**

Instruction Sheet

IS 2995

RELEASED

1 • 2 • 86



NOTE: HANDLE, ADAPTER, AND WING TIP ARE THREADED REPLACEABLE PARTS.

Fig. 1**1. INTRODUCTION**

AMP Housing Wing Removal and Replacement Tool 266233-1, used with Zero Insertion Force (ZIF) Linear Card-Edge Connectors, is designed to remove and to replace the wings of ZIF connector housing assemblies. The wings, listed by part number in Figure 1, must be removed in order to replace contacts, cams, handles, or housing modules when repairing a ZIF connector that is seated on a printed circuit (pc) board or panel.

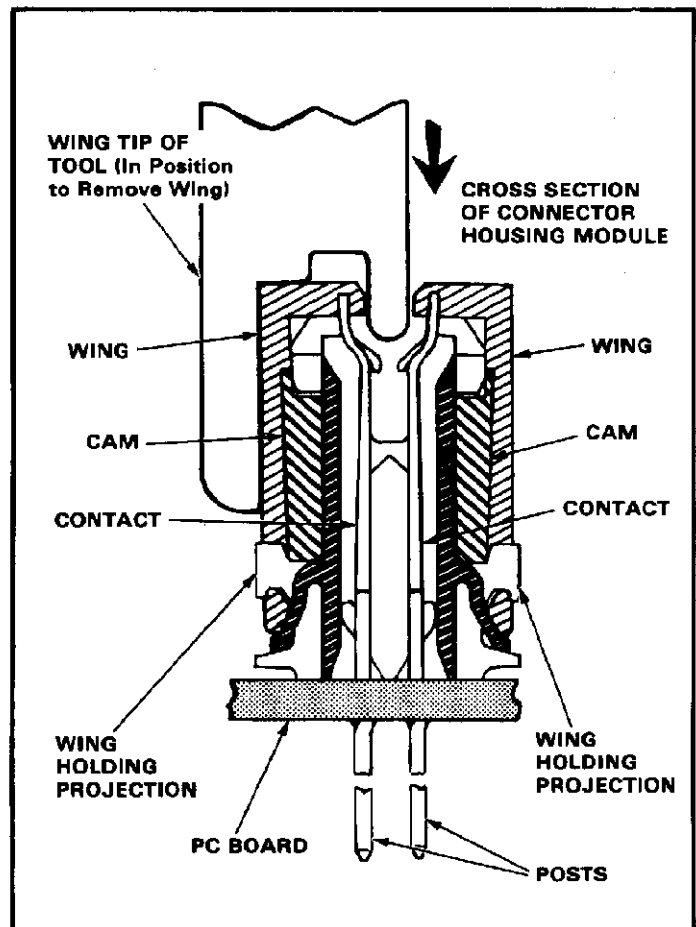
Read this material thoroughly before starting.

2. DESCRIPTION

Each tool consists of three replaceable parts: a plastic handle, a threaded metal adapter, and a metal wing tip.

tip. The adapter screws into the handle. The wing tip, with its threads being cemented during assembly, screws onto the adapter. If the wing tip becomes dislodged, it is recommended that the threads of the replacement tip be cemented during re-assembly.

The wing tip of the tool is shown in Figure 2 in position for removing one of the wings. The ZIF connector module is shown in cross section seated on a pc board or panel.

**Fig. 2****3. WING REMOVAL**

The connector housing assembly wings must be removed to repair the connector. Refer to Figure 3, and proceed as follows:

1. Place wing tip of tool over wing to be removed (see Figures 2 and 3A).
2. Rotate tool away from housing module (Figure 3B) and push down (Figure 3C).
3. Rotate tool back toward card slot (Figure 3D), releasing wing from housing module. Lift tool and wing from housing module and then remove wing from tool.

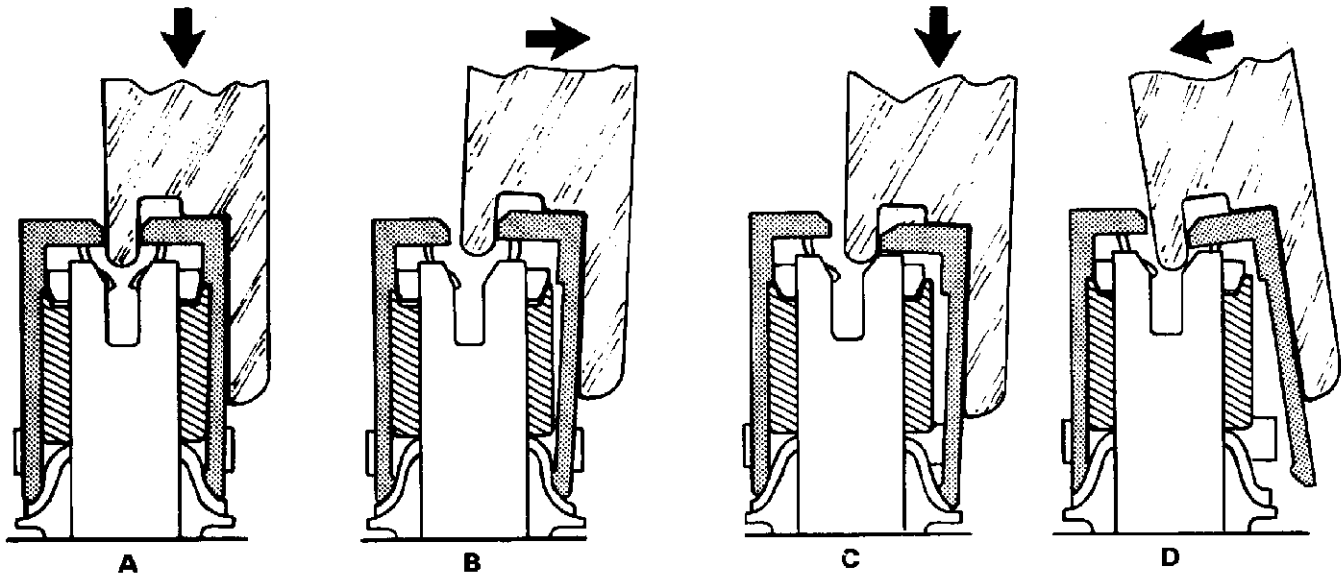
WING REMOVAL

Fig. 3

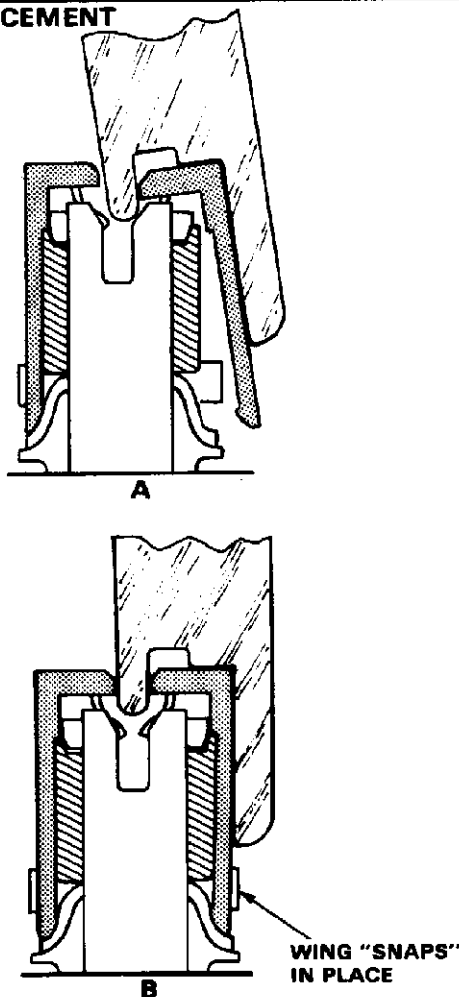
WING REPLACEMENT

Fig. 4

4. WING REPLACEMENT

After completing the connector repair, the housing module wings can be replaced one at a time, as shown in Figure 4. It is important that the square holes in the wing align with the wing holding projections as shown in Figure 5. Proceed as follows:

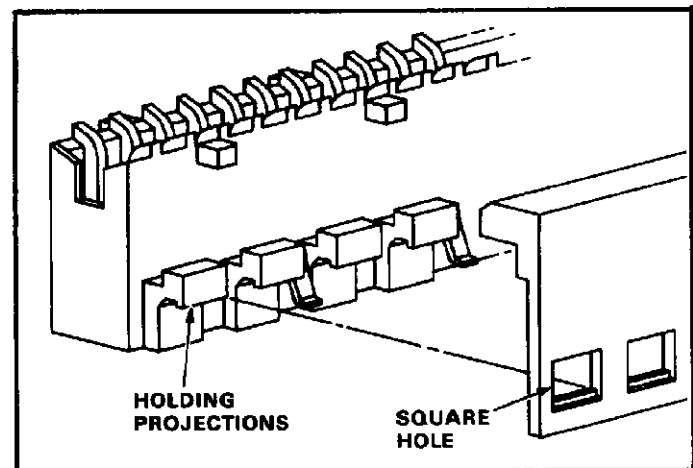


Fig. 5

1. Place wing on housing module with contacts properly set in wing circuit holes.
2. Place tool on wing (Figure 4A), push down, and rotate tool as indicated in Figure 4A until openings in wing engage with wing holding projections and wing "snaps" into place on housing module (Figure 4B). The square holes in the wing must align with the wing holding projections as shown in Figure 5. Lift tool straight up to remove tool.
3. When all wings are replaced, actuate cams to check connector for proper operation.

5. TOOL CERTIFICATION

The tooling is assembled and certified before shipment. AMP recommends that the tool be inspected immediately upon its arrival and at regularly scheduled intervals to ensure that it has not been damaged during handling and operation.

and replacement parts may be purchased by sending a request to:

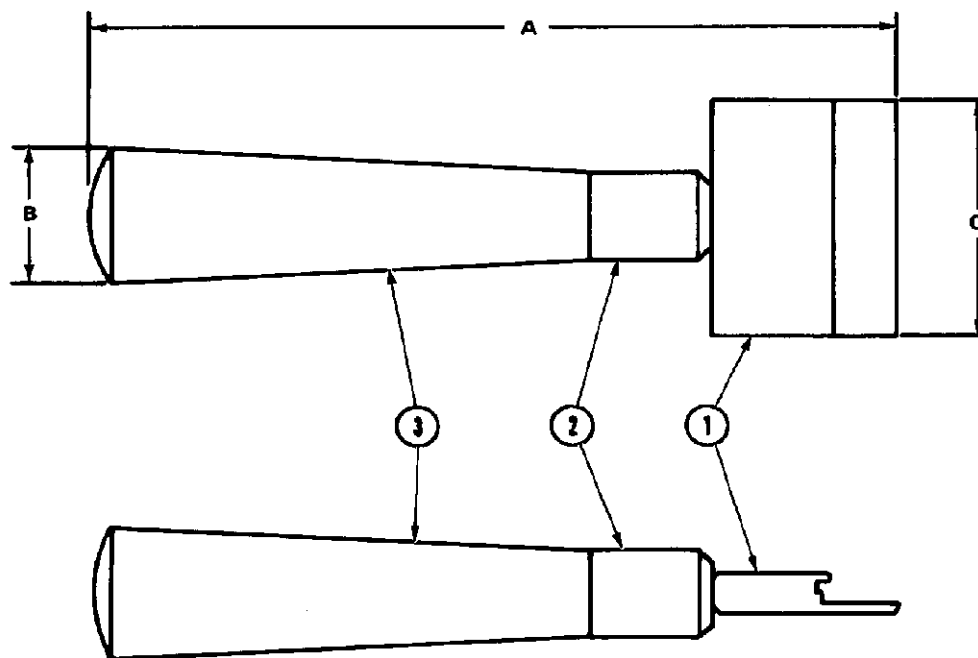
AMP Incorporated
P.O. Box 3608
Harrisburg, PA 17105-3608

NOTE

The threads of the wing tip are treated with a cement that will soften when heat is applied. This will allow separation of the wing tip and adapter when component replacement is necessary.

6. TOOL REPAIR

All of the components listed in Figure 6 are customer-replaceable by qualified personnel. Additional tooling



ITEM	PART NUMBER	DESCRIPTION	QUANTITIES REQUIRED
1	311536-1	Wing Tip	1
2	311535-1	Adapter	1
3	27152-2	Handle	1

TOOL SPECIFICATIONS					ENGINEERING APPROVAL	DATE
PART NUMBER	DIMENSIONS (In.)			WEIGHT (Approx)		
	A	B	C			
266233-1	6.38	1.12	2.00	4.0 oz	George Hoover	1 • 2 • 86

Fig. 6