



Chipsmall Limited consists of a professional team with an average of over 10 year of expertise in the distribution of electronic components. Based in Hongkong, we have already established firm and mutual-benefit business relationships with customers from,Europe,America and south Asia,supplying obsolete and hard-to-find components to meet their specific needs.

With the principle of “Quality Parts,Customers Priority,Honest Operation,and Considerate Service”,our business mainly focus on the distribution of electronic components. Line cards we deal with include Microchip,ALPS,ROHM,Xilinx,Pulse,ON,Everlight and Freescale. Main products comprise IC,Modules,Potentiometer,IC Socket,Relay,Connector.Our parts cover such applications as commercial,industrial, and automotives areas.

We are looking forward to setting up business relationship with you and hope to provide you with the best service and solution. Let us make a better world for our industry!



Contact us

Tel: +86-755-8981 8866 Fax: +86-755-8427 6832

Email & Skype: info@chipsmall.com Web: www.chipsmall.com

Address: A1208, Overseas Decoration Building, #122 Zhenhua RD., Futian, Shenzhen, China



Orthogonal COMBICON headers for THR processes MSTBO 2,5/4-G1... THR R44 BK



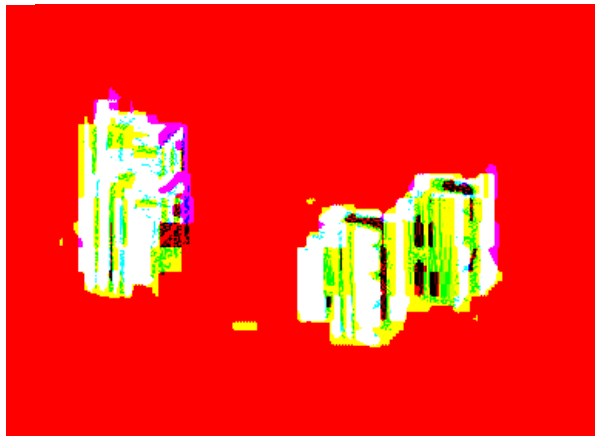
COMBICON Select
The COMBICON search engine with CAD downloading



COMBICON Select – the printed circuit board connection software supports your workflow from the PCB and housing layout to the ordering process with:

- Systematic and fast selection of products
- Universal Internet aided engineering with extensive CAD downloading
- Easy-to-use e-shopping functions.

select.phoenixcontact.com/combicon



Description	No. of pos.	Dim. a [mm]
COMBICON header , for soldering onto the PCB, color: black, „PCB on the left“	4	15
COMBICON header , for soldering onto the PCB, color: black, „PCB on the right“	4	15

Technical data

Dimensions	
Pitch	[mm]
Hole diameter	[mm]
Pin dimensions	[mm]x[mm]

Technical data in accordance with IEC/ DIN VDE

Insulating material group	—
Surge voltage category / contamination class	—/—
Rated voltage	[V]
Rated surge voltage	[kV]
Nominal current / cross section	[A]/[mm²]
Maximum load current / cross section	[A]/[mm²]

Insulating material

Inflammability class in acc. with UL 94

Approval data (UL/CUL and CSA)

Nominal voltage / current / conductor sizes UL/CUL: [V]/[A]/AWG

Type	Order No.	Pcs./Pkt.
MSTBO 2,5/4-G1L THR R44 BK	26 97 19 4	100
MSTBO 2,5/4-G1L THR R44 BK	26 97 20 4	100

see description

	5.0		
	1.5		
	1 x 1		
	I		
III / 3	III / 2	II / 2	
250	320	400	
4	4	4	
	16 / —		
	16 / —		
	PA		
	V0		
	300 / 10 / ---		

Feed direction R44



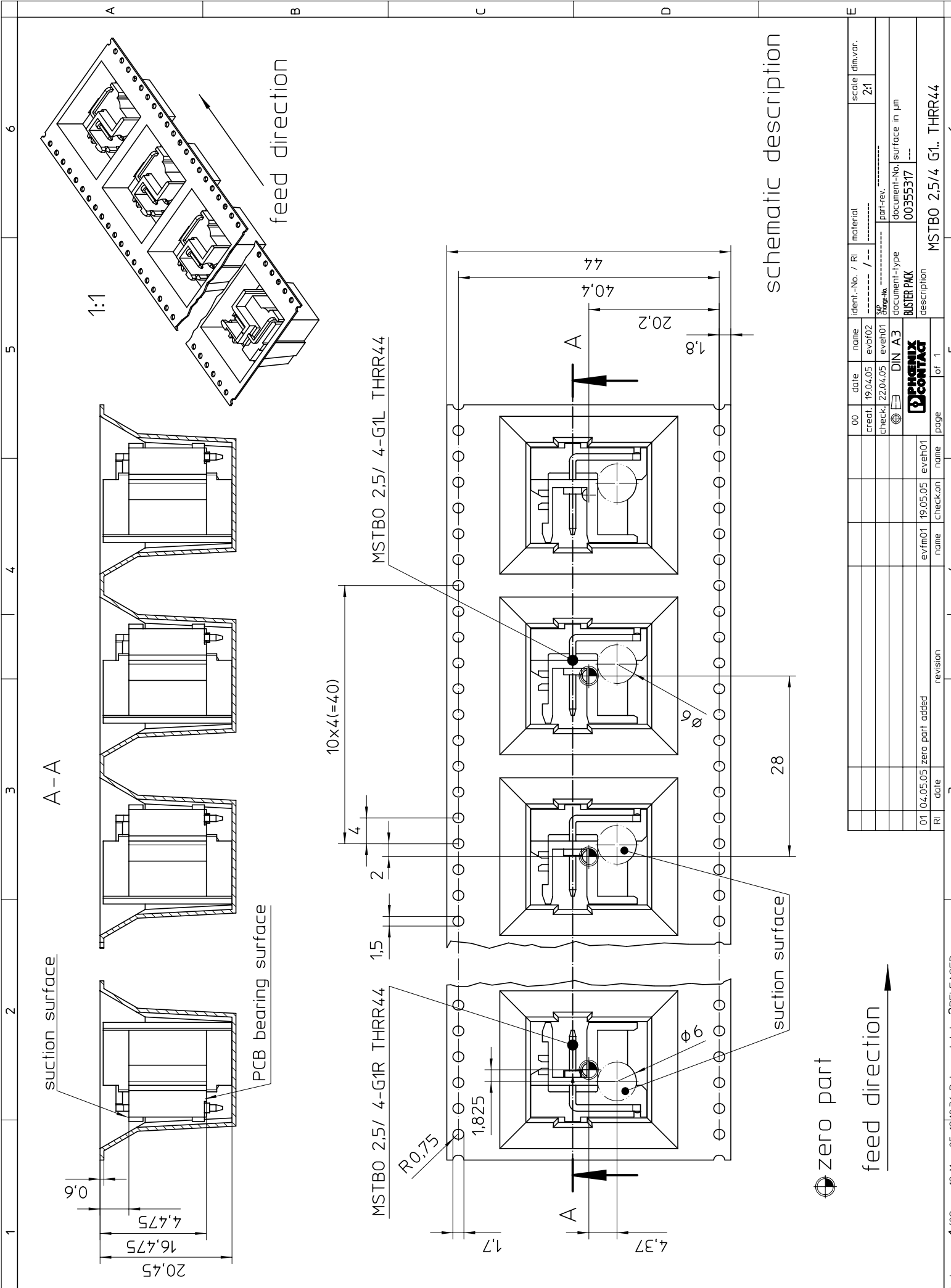
MSTBO 2,5/4-G1L THR R44 BK



MSTBO 2,5/4-G1R THR R44 BK



The copying, distribution and utilisation of this document as well as the communication of its contents to others without expressed authorization is prohibited according to §19 UWG German Law. Offenders will be held liable for the payment of damages according to §19 UWG German Law. All rights reserved. In particular the right to carry out patent, utility model or ornamental design registrations. Fachmarkenstrasse 8 D-32825 Blomberg



zero part

feed direction

01	04.05.05	zero part added	evr/m01	19.05.05	evet/h01	name	check-con	name	page	of 1	5
RI	date	revision	name	check-con	name	name	check-con	name	page	of 1	4
<p>PHOENIX CONTACT logo</p> <p>DIN A3</p> <p>document-type: BUSTER PACK</p> <p>document-No.: 00355317</p> <p>surface in µm: ----</p> <p>part-rev.: ----</p> <p>description: MSTBO 2.5/4 G1. THRR44</p>											
										scale	dim.var.
										2:1	