



Chipsmall Limited consists of a professional team with an average of over 10 year of expertise in the distribution of electronic components. Based in Hongkong, we have already established firm and mutual-benefit business relationships with customers from,Europe,America and south Asia,supplying obsolete and hard-to-find components to meet their specific needs.

With the principle of “Quality Parts,Customers Priority,Honest Operation,and Considerate Service”,our business mainly focus on the distribution of electronic components. Line cards we deal with include Microchip,ALPS,ROHM,Xilinx,Pulse,ON,Everlight and Freescale. Main products comprise IC,Modules,Potentiometer,IC Socket,Relay,Connector.Our parts cover such applications as commercial,industrial, and automotives areas.

We are looking forward to setting up business relationship with you and hope to provide you with the best service and solution. Let us make a better world for our industry!



## Contact us

Tel: +86-755-8981 8866 Fax: +86-755-8427 6832

Email & Skype: info@chipsmall.com Web: www.chipsmall.com

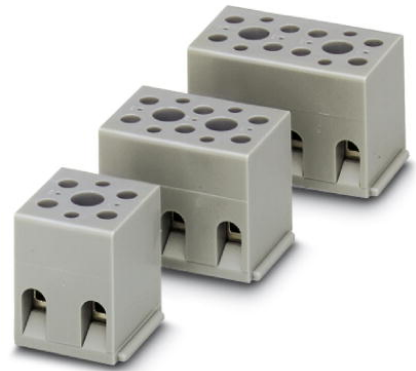
Address: A1208, Overseas Decoration Building, #122 Zhenhua RD., Futian, Shenzhen, China



**G 5/ 3**

Order No.: 2716033

The illustration shows a combination of versions G 5/2, G 5/3 and G 5/4

<http://eshop.phoenixcontact.de/phoenix/treeViewClick.do?UID=2716033>

Device terminal block, for direct mounting, 3-pos.

**Commercial data**

|                          |                    |
|--------------------------|--------------------|
| EAN                      | 4017918061777      |
| Pack                     | 50 pcs.            |
| Customs tariff           | 85369010           |
| Weight/Piece             | 0.023025 KG        |
| Catalog page information | Page 442 (CL-2009) |

**Product notes**WEEE/RoHS-compliant since:  
01/01/2003

<http://www.download.phoenixcontact.com>  
Please note that the data given here has been taken from the online catalog. For comprehensive information and data, please refer to the user documentation. The General Terms and Conditions of Use apply to Internet downloads.

**Technical data****General**

|                                    |      |
|------------------------------------|------|
| Number of levels                   | 1    |
| Number of connections              | 6    |
| Color                              | gray |
| Insulating material                | PA   |
| Inflammability class acc. to UL 94 | V2   |

**Dimensions**

|        |       |
|--------|-------|
| Length | 22 mm |
| Width  | 31 mm |

**Technical data**

|                                  |                         |
|----------------------------------|-------------------------|
| Rated surge voltage              | 6 kV                    |
| Pollution degree                 | 3                       |
| Surge voltage category           | III                     |
| Insulating material group        | I                       |
| Connection in acc. with standard | IEC 60947-7-1/IEC 60998 |
| Nominal current $I_N$            | 32 A                    |
| Nominal voltage $U_N$            | 500 V                   |

**Connection data**

|   |                      |
|---|----------------------|
| Conductor cross section solid min.  | 0.2 mm <sup>2</sup>  |
| Conductor cross section solid max.  | 4 mm <sup>2</sup>    |
| Conductor cross section stranded min.   | 0.2 mm <sup>2</sup>  |
| Conductor cross section stranded max.   | 4 mm <sup>2</sup>    |
| Conductor cross section AWG/kcmil min.  | 24                   |
| Conductor cross section AWG/kcmil max   | 12                   |
| Conductor cross section stranded, with ferrule without plastic sleeve min.              | 0.25 mm <sup>2</sup> |
| Conductor cross section stranded, with ferrule without plastic sleeve max.              | 4 mm <sup>2</sup>    |
| Conductor cross section stranded, with ferrule with plastic sleeve min.                 | 0.25 mm <sup>2</sup> |
| Conductor cross section stranded, with ferrule with plastic sleeve max.                 | 2.5 mm <sup>2</sup>  |
| 2 conductors with same cross section, solid min.  | 0.2 mm <sup>2</sup>  |
| 2 conductors with same cross section, solid max.  | 1.5 mm <sup>2</sup>  |
| 2 conductors with same cross section, stranded min.                                     | 0.2 mm <sup>2</sup>  |
| 2 conductors with same cross section, stranded max.                                     | 1.5 mm <sup>2</sup>  |
| 2 conductors with same cross section, stranded, ferrules without plastic sleeve, min.   | 0.25 mm <sup>2</sup> |
| 2 conductors with same cross section, stranded, ferrules without plastic sleeve, max.   | 1.5 mm <sup>2</sup>  |
| 2 conductors with same cross section, stranded, TWIN ferrules with plastic sleeve, min. | 0.5 mm <sup>2</sup>  |

|   |                   |
|---|-------------------|
| 2 conductors with same cross section, stranded, TWIN ferrules with plastic sleeve, max. | 1 mm <sup>2</sup> |
| Type of connection  | Screw connection  |
| Stripping length  | 8 mm              |
| Internal cylindrical gage   | A3                |
| Screw thread  | M3                |
| Tightening torque, min  | 0.6 Nm            |
| Tightening torque max   | 0.8 Nm            |

### Certificates / Approvals



Certification

CSA, CUL, GL, GOST, NK, PRS, UL

#### CSA

|                       |       |
|-----------------------|-------|
| Nominal voltage $U_N$ | 300 V |
| Nominal current $I_N$ | 30 A  |
| AWG/kcmil             | 28-10 |

#### CUL

|                       |       |
|-----------------------|-------|
| Nominal voltage $U_N$ | 300 V |
| Nominal current $I_N$ | 30 A  |
| AWG/kcmil             | 26-10 |

#### UL

|                       |       |
|-----------------------|-------|
| Nominal voltage $U_N$ | 300 V |
| Nominal current $I_N$ | 30 A  |
| AWG/kcmil             | 26-10 |

### Accessories

| Item           | Designation | Description   |
|----------------|-------------|---|
| <b>General</b> |             |   |
| 2720032        | WS-G5/3     | Warning plate, for the device terminal block G 5, completely covers the surface of the terminal block, 3-pos. |

**Marking**

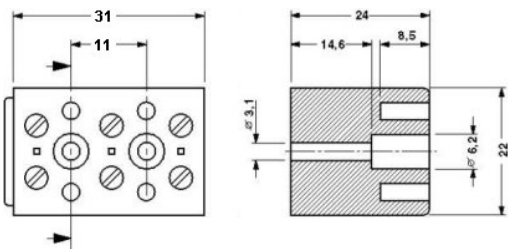
|         |       |   |
|---------|-------|---|
| 1401404 | BN WH | Marker pin, unprinted: for individual labeling with M-PEN, lettering field size: 4 x 4 mm |
|---------|-------|---|

**Tools**

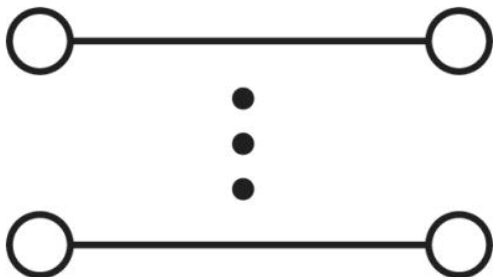
|         |             |  |
|---------|-------------|--|
| 1205053 | SZS 0,6X3,5 | Screwdriver, bladed, matches all screw terminal blocks up to 4.0 mm <sup>2</sup> connection cross section, blade: 0.6 x 3.5 mm, without VDE approval |
|---------|-------------|--|

**Diagrams/Drawings**

## Dimensioned drawing



## Circuit diagram



**Address**

PHOENIX CONTACT Deutschland GmbH  
Flachmarktstr. 8  
32825 Blomberg, Germany  
Phone +49 5235 3 12000  
Fax +49 5235 3 41200  
<http://www.phoenixcontact.de>



© 2010 Phoenix Contact  
Technical modifications reserved;