



Chipsmall Limited consists of a professional team with an average of over 10 year of expertise in the distribution of electronic components. Based in Hongkong, we have already established firm and mutual-benefit business relationships with customers from,Europe,America and south Asia,supplying obsolete and hard-to-find components to meet their specific needs.

With the principle of “Quality Parts,Customers Priority,Honest Operation,and Considerate Service”,our business mainly focus on the distribution of electronic components. Line cards we deal with include Microchip,ALPS,ROHM,Xilinx,Pulse,ON,Everlight and Freescale. Main products comprise IC,Modules,Potentiometer,IC Socket,Relay,Connector.Our parts cover such applications as commercial,industrial, and automotives areas.

We are looking forward to setting up business relationship with you and hope to provide you with the best service and solution. Let us make a better world for our industry!



## Contact us

Tel: +86-755-8981 8866 Fax: +86-755-8427 6832

Email & Skype: info@chipsmall.com Web: www.chipsmall.com

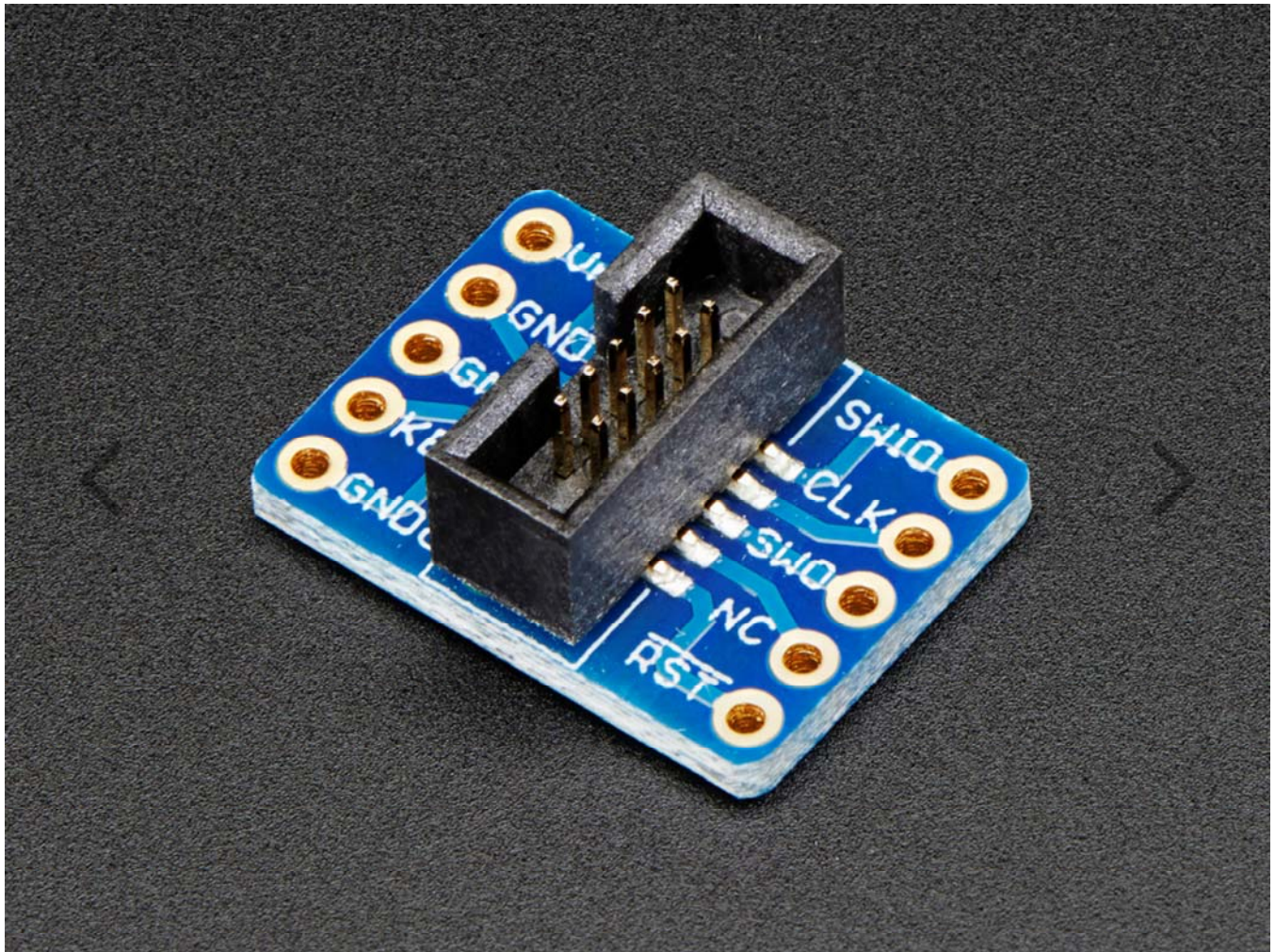
Address: A1208, Overseas Decoration Building, #122 Zhenhua RD., Futian, Shenzhen, China





# SWD (2x5 1.27mm) Cable Breakout Board

PRODUCT ID: 2743



---

## DESCRIPTION

This adapter board is designed to make it easier to use ARM dev boards that use slimmer 2x5 (0.05"/1.27mm pitch) SWD cables for programming. It's helpful for using products like the JTAGulator, STLink or SEGGER J-Link with tiny boards that use the 10-pin SWD programming connector, often Cortex M0 or M3's.

This board comes with no cables. It's really just the breakout board and some header if you need it – but is super helpful when you want to use JTAG/SWD debugging. We do stock the SWD cable if you need one here and have a 'classic' JTAG to SWD converter board here.

---

# Technical Details

14mm x 18mm x 7mm / 0.55" x 0.7" x 0.3"

Weight: 1g