



Chipsmall Limited consists of a professional team with an average of over 10 year of expertise in the distribution of electronic components. Based in Hongkong, we have already established firm and mutual-benefit business relationships with customers from,Europe,America and south Asia,supplying obsolete and hard-to-find components to meet their specific needs.

With the principle of “Quality Parts,Customers Priority,Honest Operation,and Considerate Service”,our business mainly focus on the distribution of electronic components. Line cards we deal with include Microchip,ALPS,ROHM,Xilinx,Pulse,ON,Everlight and Freescale. Main products comprise IC,Modules,Potentiometer,IC Socket,Relay,Connector.Our parts cover such applications as commercial,industrial, and automotives areas.

We are looking forward to setting up business relationship with you and hope to provide you with the best service and solution. Let us make a better world for our industry!



## Contact us

Tel: +86-755-8981 8866 Fax: +86-755-8427 6832

Email & Skype: info@chipsmall.com Web: www.chipsmall.com

Address: A1208, Overseas Decoration Building, #122 Zhenhua RD., Futian, Shenzhen, China




# D-UFB-IB-S-RBO

Order No.: 2748360



<http://eshop.phoenixcontact.de/phoenix/treeViewClick.do?UID=2748360>

Attachment plug with surge protection for 2-conductor remote bus output. Connection: D-SUB 9 female connector - male connector with ca. 20 cm conductor, snap-on foot for mounting on NS 32 or NS 35/7.5

Commercial data	
GTIN (EAN)	 4 017918 062514
Note	Made-to-order
sales group	J400
Pack	1 pcs.
Customs tariff	85363010
Catalog page information	Page 131 (TT-2007)

### Product notes

WEEE/RoHS-compliant since:  
08/17/2006



<http://www.download.phoenixcontact.com>  
Please note that the data given here has been taken from the online catalog. For comprehensive information and data, please refer to the user documentation. The General Terms and Conditions of Use apply to Internet downloads.

Technical data	
General	
Housing material	Aluminum
Color	black

Standards for air and creepage distances	VDE 0110-1
	IEC 60664-1: 1992-10
Total surge current (8/20) $\mu$ s	1.5 kA
Ambient temperature (operation)	-40 °C ... 80 °C
Mounting type	DIN rail: 35 mm
Design	Attachment plug for DIN rail mounting
Degree of protection	IP10
Direction of action	Line-Line & Line-Earth Ground
Width	16.50 mm
Height	70.00 mm
Length	112.80 mm

#### Protective circuit

IEC category	C1
	C3
VDE requirement class	C1
	C3
Nominal voltage $U_N$	5 V DC
Maximum continuous operating voltage $U_C$	5.8 V DC
Maximum continuous voltage $U_C$ (wire-wire)	5.8 V DC
Maximum continuous voltage $U_C$ (wire-ground)	5.8 V DC
Nominal current $I_N$	300 mA (25°C)
Operating effective current $I_C$ at $U_C$	$\leq 300 \mu$ A
Ground conductor current $I_{PE}$	$\leq 300 \mu$ A
Nominal discharge surge current $I_n$ (8/20) $\mu$ s (Core-Core)	350 A
Nominal discharge surge current $I_n$ (8/20) $\mu$ s (Core-Earth)	350 A
Nominal discharge surge current $I_n$ (8/20) $\mu$ s (Core-GND)	350 A
Total surge current (8/20) $\mu$ s	1.5 kA
Max. discharge surge current $I_{max}$ (8/20) $\mu$ s maximum (Core-Earth)	350 A
Output voltage limitation at 1 kV/ $\mu$ s (Core-Core) spike	$\leq 35$ V
Output voltage limitation at 1 kV/ $\mu$ s (Core-Earth) spike	$\leq 35$ V

Output voltage limitation at 1 kV/μs (Core-Core) static	≤ 12 V
Output voltage limitation at 1 kV/μs (Core-Earth) static	≤ 12 V
Output voltage limitation at 1 kV/μs (Core-GND) static	≤ 12 V
Residual voltage at I <sub>n</sub> (conductor-conductor)	≤ 30 V
Residual voltage at I <sub>n</sub> (conductor-ground)	≤ 30 V
Residual voltage at I <sub>n</sub> (conductor-GND)	≤ 30 V
Protection level U <sub>p</sub> (Core-Core)	≤ 35 V
Protection level U <sub>p</sub> (Core-Earth)	≤ 35 V
Response time t <sub>A</sub> (Core-Core)	≤ 500 ns
Response time t <sub>A</sub> (Core-Earth)	≤ 500 ns
	≤ 500 ns
Input attenuation a <sub>E</sub> , sym.	0.1 dB (≤ 7 MHz)
	0.1 dB (≤ 8.5 MHz)
	0.1 dB (up to 2.5 MHz 600 Ohm Ω)
Cut-off frequency f <sub>g</sub> (3 dB), sym. in 50 Ohm system	Typ. 100 MHz
Cut-off frequency f <sub>g</sub> (3 dB), sym. in 150 Ohm system	> 100 MHz
Cut-off frequency f <sub>g</sub> (3 dB), sym. in 600 Ohm system	Typ. 30 MHz
Capacity (Core-Core)	50 pF
Capacity (Core-GND)	50 pF
Capacity (Core-Earth)	50 pF
Surge carrying capacity in acc. with IEC 61643-21 (Core-Core)	C1 (500 V / 250 A)
Surge carrying capacity in acc. with IEC 61643-21 (Core-Earth)	C1 (500 A/250 A)
<b>Connection data</b>	
Type of connection	D-SUB-9
Connection type IN	D-SUB-9 socket
Connection type OUT	D-SUB-9 connector
Connection method	Remote bus output
<b>Connection, protective circuit</b>	
Standards/regulations	IEC 61643-21

## Certificates / Approvals



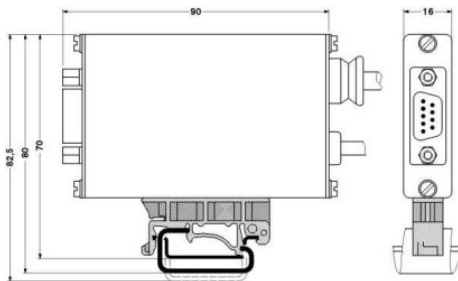
Certification

GOST

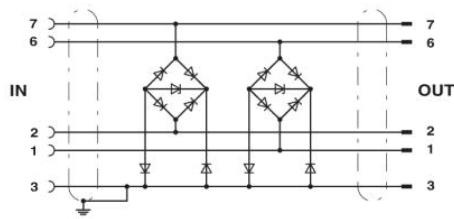
---

## Diagrams/Drawings

Dimensioned drawing



Circuit diagram



**Address**

PHOENIX CONTACT Deutschland GmbH  
Flachmarktstr. 8  
32825 Blomberg, Germany  
Phone +49 5235 3 12000  
Fax +49 5235 3 41200  
<http://www.phoenixcontact.de>



© 2010 Phoenix Contact  
Technical modifications reserved;