



Chipsmall Limited consists of a professional team with an average of over 10 year of expertise in the distribution of electronic components. Based in Hongkong, we have already established firm and mutual-benefit business relationships with customers from,Europe,America and south Asia,supplying obsolete and hard-to-find components to meet their specific needs.

With the principle of "Quality Parts,Customers Priority,Honest Operation,and Considerate Service",our business mainly focus on the distribution of electronic components. Line cards we deal with include Microchip,ALPS,ROHM,Xilinx,Pulse,ON,Everlight and Freescale. Main products comprise IC,Modules,Potentiometer,IC Socket,Relay,Connector.Our parts cover such applications as commercial,industrial, and automotives areas.

We are looking forward to setting up business relationship with you and hope to provide you with the best service and solution. Let us make a better world for our industry!



Contact us

Tel: +86-755-8981 8866 Fax: +86-755-8427 6832

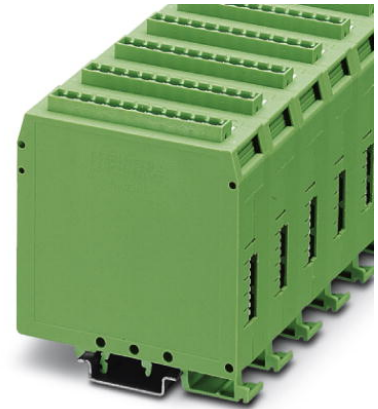
Email & Skype: info@chipsmall.com Web: www.chipsmall.com

Address: A1208, Overseas Decoration Building, #122 Zhenhua RD., Futian, Shenzhen, China



UEGM-OE/AV-24DC/24DC/100

Order No.: 2766850

<http://eshop.phoenixcontact.de/phoenix/treeViewClick.do?UID=2766850>Pulse expansion module, input: 24 V DC, output: 3 - 48 V DC/100 mA,
supply: 20 - 30 V DC**Commercial data**

EAN	4017918066888
Pack	1 pcs.
Customs tariff	85364190
Weight/Piece	0.1025 KG
Catalog page information	Page 144 (IF-2009)

Product notesWEEE/RoHS-compliant since:
12/13/2006

<http://www.download.phoenixcontact.com>
Please note that the data given here has been taken from the online catalog. For comprehensive information and data, please refer to the user documentation. The General Terms and Conditions of Use apply to Internet downloads.

Technical data**Input data**

Name	Supply
Input voltage range	20 V DC ... 30 V DC (24 V, 0 V)
Max. current consumption	Approx. 16 mA

Name of protection	Polarity protection
	Surge protection
Protective circuit/component	Polarity protection diode
Name	Pulse input
Impulse voltage	24 V DC ($\pm 20\%$)
Pulse time	0.1 ms
Max. current consumption	6 mA
Name of protection	RC element
Protective circuit/component	RC element

Output data

Output nominal voltage range	3 V DC ... 48 V DC (V_{CC} , GND)
Limiting continuous current	100 mA
Voltage drop at max. limiting continuous current	1.4 V
Output circuit	3-conductor, ground-referenced
Name of protection	Polarity protection
	Surge protection
Protective circuit/component	Polarity protection diode
	Damping diode

Connection data

Type of connection	Screw connection
Conductor cross section solid min.	0.2 mm ²
Conductor cross section solid max.	4 mm ²
Conductor cross section stranded min.	0.2 mm ²
Conductor cross section stranded max.	2.5 mm ²
Conductor cross section AWG/kcmil min.	24
Conductor cross section AWG/kcmil max	12

General data

Width	25 mm
Height	85 mm
Depth	79 mm
Test voltage input/output	1 kV
Accuracy	Set time $t \pm 10\%$
Ambient temperature (operation)	0 °C ... 55 °C
Mounting position	Any

Assembly instructions	In rows with zero spacing
Standards/regulations	IEC 60664
	IEC 60664 A
	DIN VDE 0110
Rated surge voltage / insulation	Basic insulation
Pollution degree	2
Surge voltage category	III

Certificates / Approvals



Certification GOST

Accessories

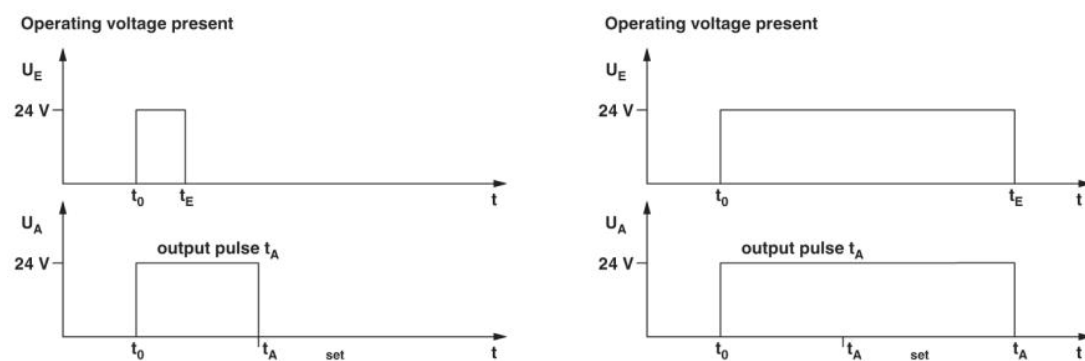
Item	Designation	Description
------	-------------	-------------

General

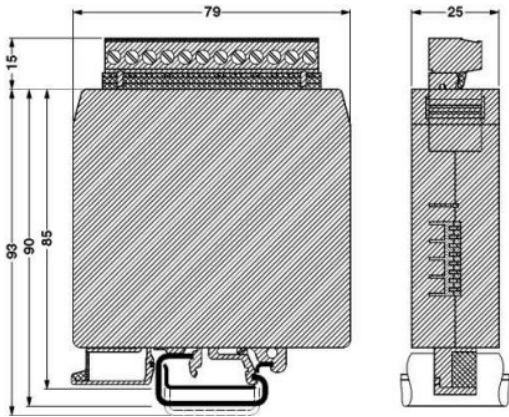
1781085	MSTBT 2,5/12-ST-5,08	Plug component, Nominal current: 12 A, Nom. voltage: 250 V, Pitch: 5.08 mm, Number of positions: 12, Connection type: Screw connection, Color: green
---------	----------------------	--

Diagrams/Drawings

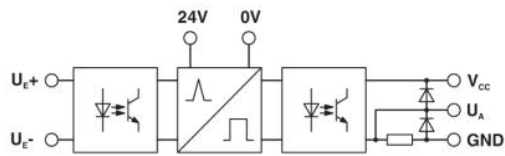
Diagram



Dimensioned drawing



Circuit diagram



Address

PHOENIX CONTACT Deutschland GmbH
Flachmarktstr. 8
32825 Blomberg, Germany
Phone +49 5235 3 12000
Fax +49 5235 3 41200
<http://www.phoenixcontact.de>



© 2010 Phoenix Contact
Technical modifications reserved;