



Chipsmall Limited consists of a professional team with an average of over 10 year of expertise in the distribution of electronic components. Based in Hongkong, we have already established firm and mutual-benefit business relationships with customers from,Europe,America and south Asia,supplying obsolete and hard-to-find components to meet their specific needs.

With the principle of “Quality Parts,Customers Priority,Honest Operation,and Considerate Service”,our business mainly focus on the distribution of electronic components. Line cards we deal with include Microchip,ALPS,ROHM,Xilinx,Pulse,ON,Everlight and Freescale. Main products comprise IC,Modules,Potentiometer,IC Socket,Relay,Connector.Our parts cover such applications as commercial,industrial, and automotives areas.

We are looking forward to setting up business relationship with you and hope to provide you with the best service and solution. Let us make a better world for our industry!



## Contact us

Tel: +86-755-8981 8866 Fax: +86-755-8427 6832

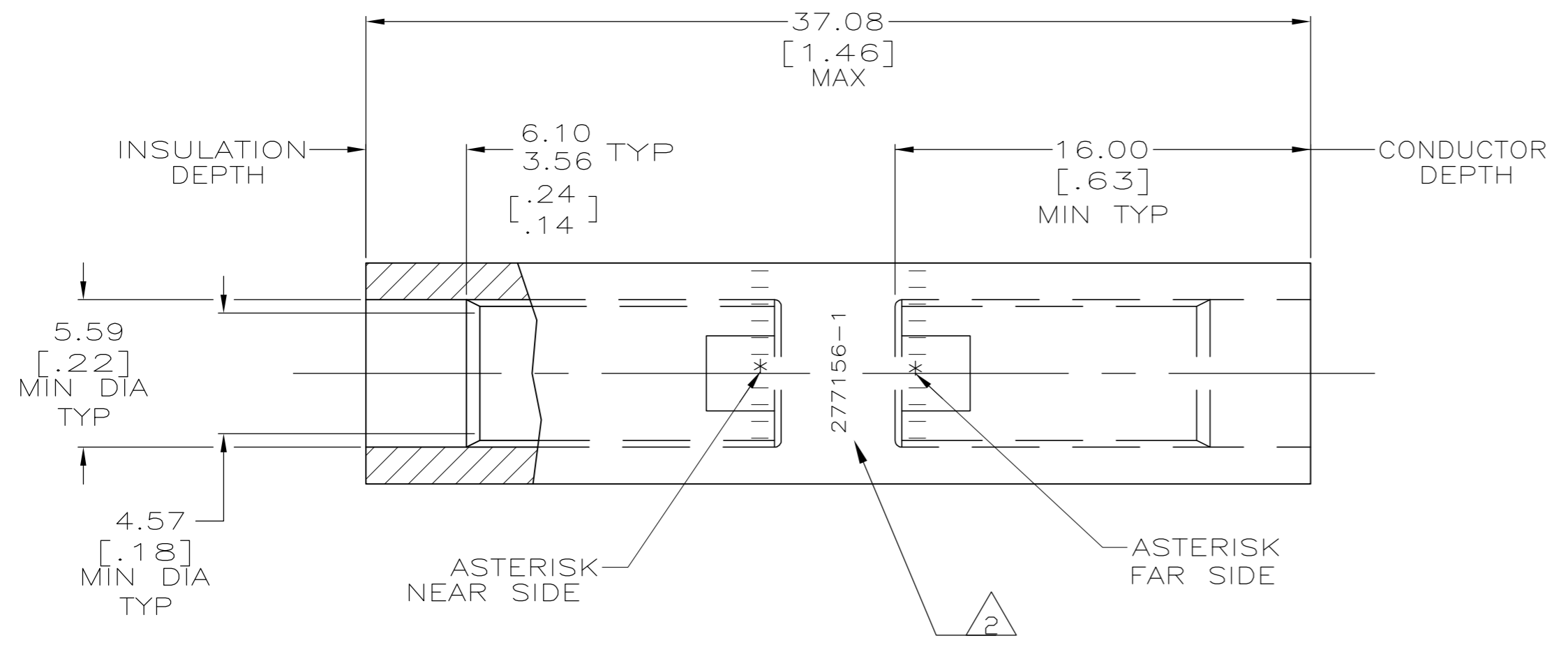
Email & Skype: info@chipsmall.com Web: www.chipsmall.com

Address: A1208, Overseas Decoration Building, #122 Zhenhua RD., Futian, Shenzhen, China

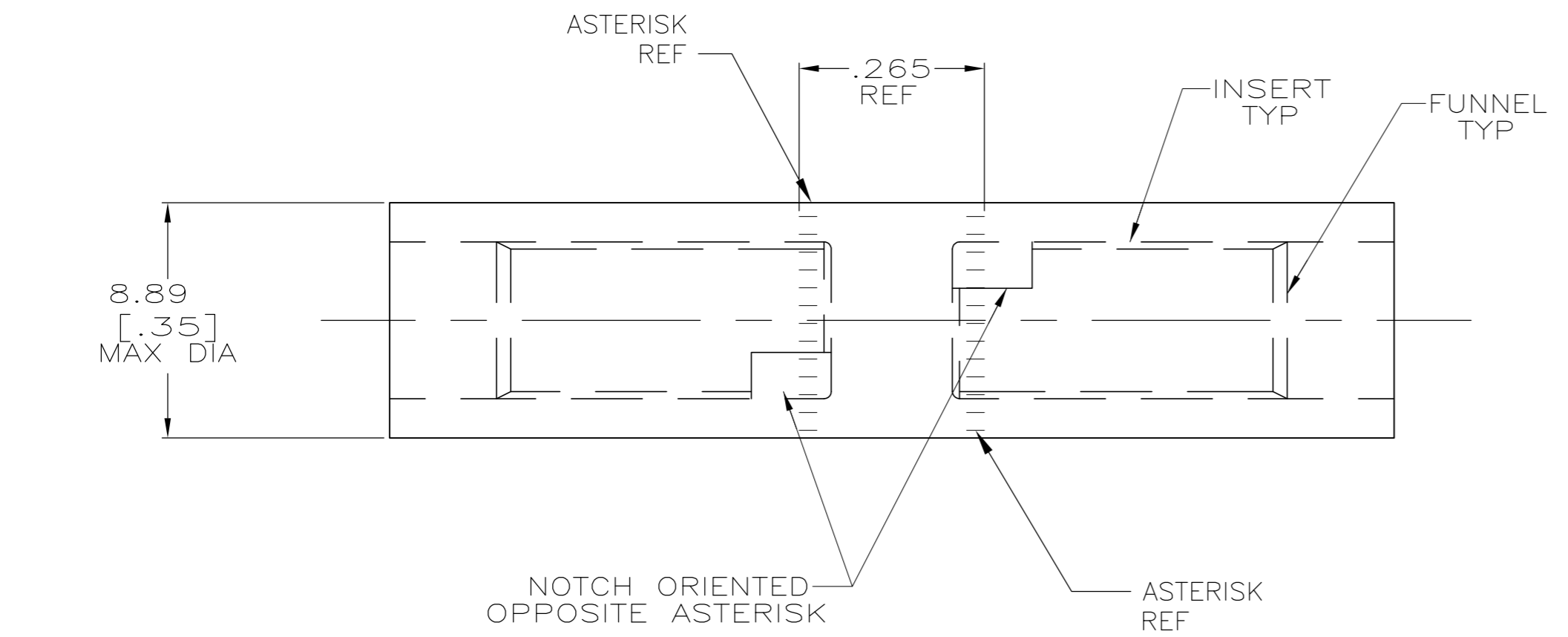


THIS DRAWING IS UNPUBLISHED. RELEASED FOR PUBLICATION  
 © COPYRIGHT - By - ALL RIGHTS RESERVED.

LOC		DIST		REVISIONS			
P	LTR	DESCRIPTION		DATE	DWN	APVD	
P		REV PER ECO-11-008916		13MAY11	PY	BW	



1 WIRE INSULATION: 4.62[.182] - 5.08[.200] DIA  
 2 STAMP "277156-1 AMP 8AL-10CU"  
 LOCATE APPROX AS SHOWN



SPLICE: COPPER ASTM B-187  
 TIN PL. PER ASTM B 545 0.00381 [.000150] MIN THK  
INSERT & FUNNEL: BRASS ASTM B36  
 NICKEL PL SAE AMS QQ-N-290A,  
 DATED JULY 2000,  
 0.00254 [.000100] MIN THK

277156-1

THIS DRAWING IS A CONTROLLED DOCUMENT.		DWN	DK SCHRUM	7/5/89	<b>TE</b> TE Connectivity
DIMENSIONS: MM [ INCHES ]		CHK	MS FEHER	5/1/90	
TOLERANCES UNLESS OTHERWISE SPECIFIED:		APVD	MJ SPICER	5/1/90	
0 PLC ± - 1 PLC ± - 2 PLC ± - 3 PLC ± - 4 PLC ± - ANGLES ± -		PRODUCT SPEC	108-11011		
MATERIAL SEE TABLE		FINISH	SEE TABLE		NAME
		WEIGHT	10.2 GRAMS		WIRE SPLICE, BUTT, COPALUM, SEALED, 4.8mm2 [10] COPPER 8.6mm2 [8] ALUMINUM
		CUSTOMER DRAWING	SCALE	5:1	SHEET 1 of 1
			SIZE	A2	CAGE CODE
			DRAWING NO	00779	RESTRICTED TO
			REV	P	