



Chipsmall Limited consists of a professional team with an average of over 10 year of expertise in the distribution of electronic components. Based in Hongkong, we have already established firm and mutual-benefit business relationships with customers from,Europe,America and south Asia,supplying obsolete and hard-to-find components to meet their specific needs.

With the principle of “Quality Parts,Customers Priority,Honest Operation,and Considerate Service”,our business mainly focus on the distribution of electronic components. Line cards we deal with include Microchip,ALPS,ROHM,Xilinx,Pulse,ON,Everlight and Freescale. Main products comprise IC,Modules,Potentiometer,IC Socket,Relay,Connector.Our parts cover such applications as commercial,industrial, and automotives areas.

We are looking forward to setting up business relationship with you and hope to provide you with the best service and solution. Let us make a better world for our industry!



## Contact us

Tel: +86-755-8981 8866 Fax: +86-755-8427 6832

Email & Skype: info@chipsmall.com Web: www.chipsmall.com

Address: A1208, Overseas Decoration Building, #122 Zhenhua RD., Futian, Shenzhen, China



## EMC filter - NEF 1- 6 - 2783082

Please be informed that the data shown in this PDF Document is generated from our Online Catalog. Please find the complete data in the user's documentation. Our General Terms of Use for Downloads are valid (<http://phoenixcontact.com/download>)




Mains interference filter, with universal foot for mounting on NS 32 and NS 35/7.5, nominal current: 6 A

### Why buy this product

- For single-phase circuits
- DIN rail module



### Key Commercial Data

Packing unit	5 STK
GTIN	 4 017918 069803
GTIN	4017918069803

### Technical data

#### Dimensions

Height	79.4 mm
Width	40 mm
Depth	84.1 mm

#### Ambient conditions

Ambient temperature (operation)	-25 °C ... 100 °C (HMF)
---------------------------------	-------------------------

#### General

Housing material	PA
Flammability rating according to UL 94	V-2
Color	black
Standards for clearances and creepage distances	IEC 60664-1
	VDE 0110-1
Type	DIN rail module, one-piece
Mounting type	DIN rail: 35 mm

# EMC filter - NEF 1- 6 - 2783082

## Technical data

### General

Number of positions	2
Direction of action	1L-N & N-PE

### Protective circuit, filter

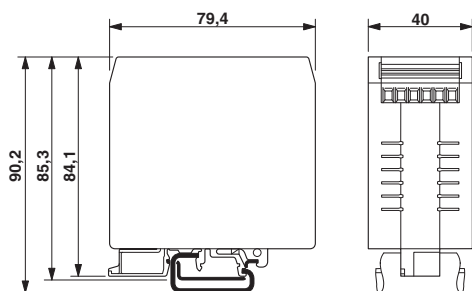
Discharge resistance	1 MΩ
----------------------	------

### Environmental Product Compliance

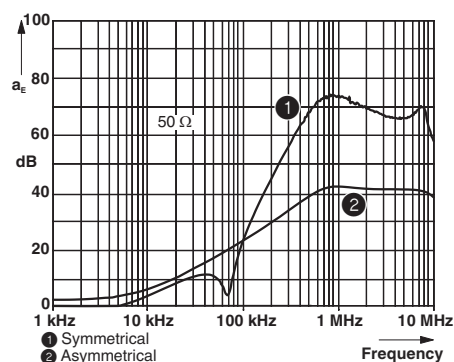
REACH SVHC	Lead 7439-92-1
China RoHS	Environmentally Friendly Use Period = 50
	For details about hazardous substances go to tab "Downloads", Category "Manufacturer's declaration"

## Drawings

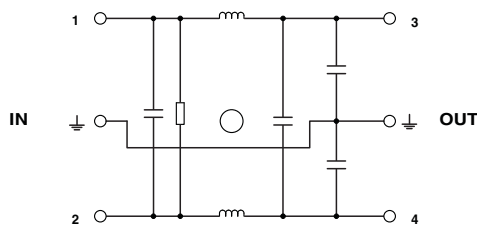
Dimensional drawing



Diagram



Circuit diagram



## Approvals

### Approvals

### Approvals

VDE Zeichengenehmigung / GL / GL-SW / EAC / EAC / GL

# EMC filter - NEF 1- 6 - 2783082

## Approvals

Ex Approvals

### Approval details

VDE Zeichengenehmigung		<a href="http://www2.vde.com/de/Institut/Online-Service/VDE-gepruefteProdukte/Seiten/Online-Suche.aspx">http://www2.vde.com/de/Institut/Online-Service/VDE-gepruefteProdukte/Seiten/Online-Suche.aspx</a>	40008521
Nominal voltage UN		250 V	
Nominal current IN		6 A	
mm <sup>2</sup> /AWG/kcmil		2.5	

GL		<a href="http://exchange.dnv.com/tari/">http://exchange.dnv.com/tari/</a>	2427504 HH
----	--	---	------------

GL-SW			2427504 HH
-------	--	--	------------

EAC			EAC-Zulassung
-----	--	--	---------------

EAC			RU C- DE.A*30.B01561
-----	--	--	-------------------------

GL			<a href="http://www.gl-group.com/newbuilding/approvals/index.html">http://www.gl-group.com/newbuilding/approvals/index.html</a>
----	--	--	---

Phoenix Contact 2018 © - all rights reserved  
<http://www.phoenixcontact.com>

PHOENIX CONTACT GmbH & Co. KG  
Flachsmarktstr. 8  
32825 Blomberg  
Germany  
Tel. +49 5235 300  
Fax +49 5235 3 41200  
<http://www.phoenixcontact.com>