



Chipsmall Limited consists of a professional team with an average of over 10 year of expertise in the distribution of electronic components. Based in Hongkong, we have already established firm and mutual-benefit business relationships with customers from,Europe,America and south Asia,supplying obsolete and hard-to-find components to meet their specific needs.

With the principle of “Quality Parts,Customers Priority,Honest Operation,and Considerate Service”,our business mainly focus on the distribution of electronic components. Line cards we deal with include Microchip,ALPS,ROHM,Xilinx,Pulse,ON,Everlight and Freescale. Main products comprise IC,Modules,Potentiometer,IC Socket,Relay,Connector.Our parts cover such applications as commercial,industrial, and automotives areas.

We are looking forward to setting up business relationship with you and hope to provide you with the best service and solution. Let us make a better world for our industry!



## Contact us

Tel: +86-755-8981 8866 Fax: +86-755-8427 6832

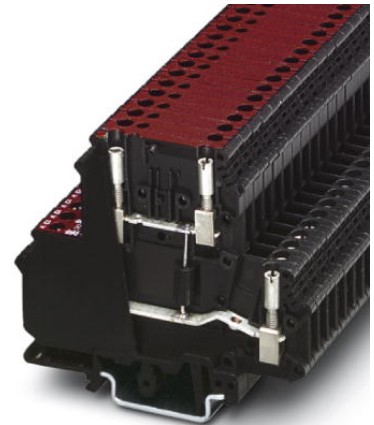
Email & Skype: info@chipsmall.com Web: www.chipsmall.com

Address: A1208, Overseas Decoration Building, #122 Zhenhua RD., Futian, Shenzhen, China




**TT-UKK5-D/ 24DC**

Order No.: 2788090

<http://eshop.phoenixcontact.de/phoenix/treeViewClick.do?UID=2788090>

Double-level modular terminal block with suppressor diode as surge protection between both levels, nominal voltage: 24 V DC, for mounting on NS 32 or NS 35/7.5, closed housing, terminal width: 6.2 mm, terminal height: 68 mm

**Commercial data**

GTIN (EAN)	 4 017918 071332
sales group	J303
Pack	50 pcs.
Customs tariff	85363010
Catalog page information	Page 109 (TT-2009)

**Product notes**WEEE/RoHS-compliant since:  
03/03/2006

<http://www.download.phoenixcontact.com>  
Please note that the data given here has been taken from the online catalog. For comprehensive information and data, please refer to the user documentation. The General Terms and Conditions of Use apply to Internet downloads.

**Technical data****General**

Housing material	PA
Inflammability class acc. to UL 94	V2
Color	black

Standards for air and creepage distances	VDE 0110-1
Total surge current (8/20) $\mu$ s	169 A
Ambient temperature (operation)	-40 °C ... 85 °C
Mounting type	DIN rail/G-profile rail
Design	Double-level terminal block
Degree of protection	IP20
Direction of action	Line-Line
Width	6.20 mm
Height	68.00 mm
Length	80.00 mm

**Protective circuit**

IEC category	C3
VDE requirement class	C3
Nominal voltage $U_N$	24 V DC
Maximum continuous operating voltage $U_C$	28 V DC
	20 V AC
Maximum continuous voltage $U_C$ (wire-wire)	28 V DC
	20 V AC
Nominal current $I_N$	16 A
Operating effective current $I_C$ at $U_C$	$\leq 5$ A
Nominal discharge surge current $I_n$ (8/20) $\mu$ s (Core-Core)	169 A
Total surge current (8/20) $\mu$ s	169 A
Max. discharge surge current $I_{max}$ (8/20) $\mu$ s maximum (Core-Core)	169 A
Nominal pulse current $I_{an}$ (10/1000) $\mu$ s (Core-Core)	33 A
Output voltage limitation at 1 kV/ $\mu$ s (Core-Core) static	$\leq 40$ V
Residual voltage at $I_n$ , (conductor-conductor)	$\leq 55$ V
Response time $t_A$ (Core-Core)	$\leq 1$ ns
Cut-off frequency $f_g$ (3 dB), sym. in 150 Ohm system	Typ. 1.2 MHz
Capacity (Core-Core)	$\leq 1.6$ nF (typical)
Surge carrying capacity in acc. with IEC 61643-21 (Core-Core)	C3 (25 A)

### Connection data

Type of connection	Screw connection
Connection type IN	Screw terminal blocks
Connection type OUT	Screw terminal blocks
Screw thread	M3
Tightening torque	0.5 Nm
Stripping length	8 mm
Conductor cross section stranded min.	0.2 mm <sup>2</sup>
Conductor cross section stranded max.	4 mm <sup>2</sup>
Conductor cross section solid min.	0.2 mm <sup>2</sup>
Conductor cross section solid max.	4 mm <sup>2</sup>
Conductor cross section AWG/kcmil min.	24
Conductor cross section AWG/kcmil max	12

### Connection, protective circuit

Standards/regulations	IEC 61643-21
-----------------------	--------------

### Certificates / Approvals

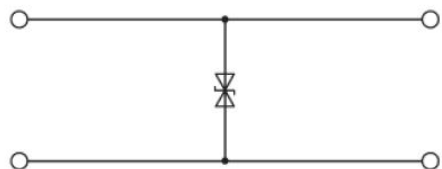


Certification

CSA, GOST

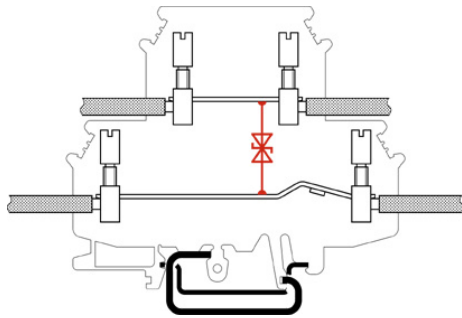
### Diagrams/Drawings

Circuit diagram



Schematic diagram

---



**Address**

PHOENIX CONTACT Deutschland GmbH  
Flachmarktstr. 8  
32825 Blomberg, Germany  
Phone +49 5235 3 12000  
Fax +49 5235 3 41200  
<http://www.phoenixcontact.de>



© 2011 Phoenix Contact  
Technical modifications reserved;