



Chipsmall Limited consists of a professional team with an average of over 10 year of expertise in the distribution of electronic components. Based in Hongkong, we have already established firm and mutual-benefit business relationships with customers from,Europe,America and south Asia,supplying obsolete and hard-to-find components to meet their specific needs.

With the principle of "Quality Parts,Customers Priority,Honest Operation,and Considerate Service",our business mainly focus on the distribution of electronic components. Line cards we deal with include Microchip,ALPS,ROHM,Xilinx,Pulse,ON,Everlight and Freescale. Main products comprise IC,Modules,Potentiometer,IC Socket,Relay,Connector.Our parts cover such applications as commercial,industrial, and automotives areas.

We are looking forward to setting up business relationship with you and hope to provide you with the best service and solution. Let us make a better world for our industry!



Contact us

Tel: +86-755-8981 8866 Fax: +86-755-8427 6832

Email & Skype: info@chipsmall.com Web: www.chipsmall.com

Address: A1208, Overseas Decoration Building, #122 Zhenhua RD., Futian, Shenzhen, China



EMC filter - NEF 1- 3 - 2794110

Please be informed that the data shown in this PDF Document is generated from our Online Catalog. Please find the complete data in the user's documentation. Our General Terms of Use for Downloads are valid (<http://phoenixcontact.com/download>)




Mains interference filter, with universal foot for mounting on NS 32 and NS 35/7.5, nominal current: 3 A

Why buy this product

- DIN rail module
- For single-phase circuits



Key Commercial Data

Packing unit	1 STK
GTIN	 4 017918 072803
Weight per Piece (excluding packing)	93.1 g
Custom tariff number	85363010
Country of origin	Germany

Technical data

Dimensions

Height	79.4 mm
Width	25 mm
Depth	84.15 mm

Ambient conditions

Ambient temperature (operation)	-25 °C ... 100 °C (HMF)
---------------------------------	-------------------------

General

Housing material	PA
------------------	----

EMC filter - NEF 1- 3 - 2794110

Technical data

General

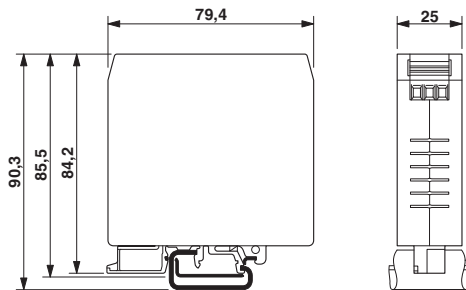
Flammability rating according to UL 94	V-2
Color	black
Standards for clearances and creepage distances	IEC 60664-1
	VDE 0110-1
Type	Rail-mountable module, one-piece
Mounting type	DIN rail: 35 mm
Number of positions	2
Direction of action	1L-N & N-PE

Protective circuit, filter

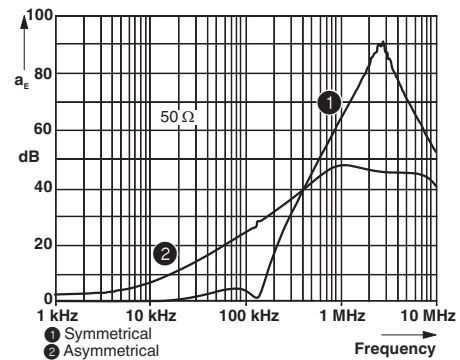
Discharge resistance	1 MΩ
----------------------	------

Drawings

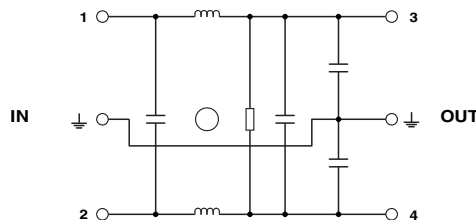
Dimensional drawing



Diagram



Circuit diagram



Classifications

eCl@ss

eCl@ss 4.0	27140201
------------	----------

EMC filter - NEF 1- 3 - 2794110

Classifications

eCl@ss

eCl@ss 4.1	27130801
eCl@ss 5.0	27130801
eCl@ss 5.1	27130801
eCl@ss 6.0	27130806
eCl@ss 7.0	27130806
eCl@ss 8.0	27130806
eCl@ss 9.0	27130806

ETIM

ETIM 2.0	EC000942
ETIM 3.0	EC000942
ETIM 4.0	EC000942
ETIM 5.0	EC000942

UNSPSC

UNSPSC 6.01	30212010
UNSPSC 7.0901	39121610
UNSPSC 11	39121610
UNSPSC 12.01	39121610
UNSPSC 13.2	39121620

Approvals

Approvals

Approvals

UL Recognized / VDE Zeichengenehmigung / GL / GL-SW / EAC / EAC / GL


Ex Approvals


Approvals submitted

Approval details

EMC filter - NEF 1- 3 - 2794110

Approvals

UL Recognized 	
mm ² /AWG/kcmil	22-12
Nominal current I _N	3 A
Nominal voltage U _N	250 V

VDE Zeichengenehmigung 	
mm ² /AWG/kcmil	2.5
Nominal current I _N	3 A
Nominal voltage U _N	250 V

GL

GL-SW

EAC

EAC

GL