



Chipsmall Limited consists of a professional team with an average of over 10 year of expertise in the distribution of electronic components. Based in Hongkong, we have already established firm and mutual-benefit business relationships with customers from,Europe,America and south Asia,supplying obsolete and hard-to-find components to meet their specific needs.

With the principle of “Quality Parts,Customers Priority,Honest Operation,and Considerate Service”,our business mainly focus on the distribution of electronic components. Line cards we deal with include Microchip,ALPS,ROHM,Xilinx,Pulse,ON,Everlight and Freescale. Main products comprise IC,Modules,Potentiometer,IC Socket,Relay,Connector.Our parts cover such applications as commercial,industrial, and automotives areas.

We are looking forward to setting up business relationship with you and hope to provide you with the best service and solution. Let us make a better world for our industry!



Contact us

Tel: +86-755-8981 8866 Fax: +86-755-8427 6832

Email & Skype: info@chipsmall.com Web: www.chipsmall.com

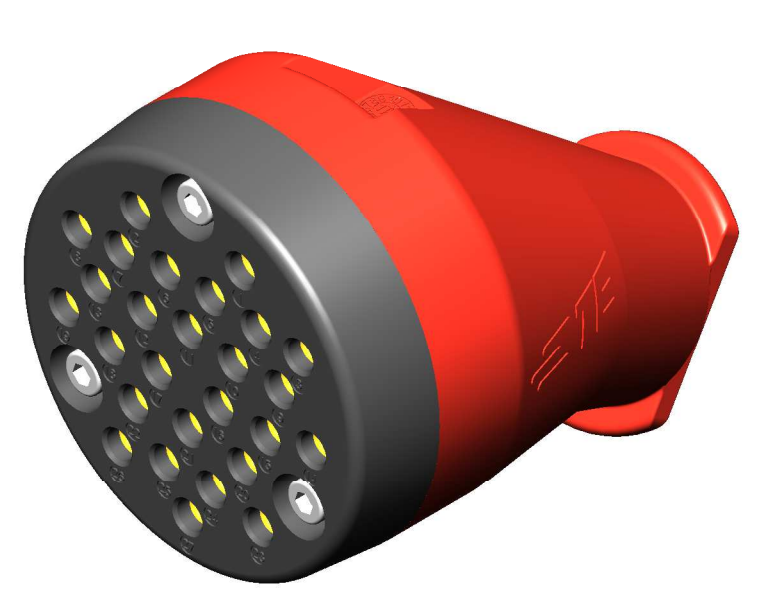
Address: A1208, Overseas Decoration Building, #122 Zhenhua RD., Futian, Shenzhen, China



Project NR		REVISIONS			
P	LTW	DESCRIPTION	DATE	BY	APPV
B		Diffusion N°331170	28.JUL.2015	MB	MV
C		Agg item 15 and 13 - Add note 13	13.MAR.2016	MB	MV
D		Change reference item 2, 6 and 7 - update product spec & application spec - Diffusion 331174	01.FEB.2016	EL	MV

- 1 () : cotes pour information / dimensions for information
cotes de controle / inspection dimensions
- 2 () Instructions de mise en oeuvre à appliquer par le client
Customer instructions to be applied by the customer
- 3 () Ref. YS-UC-212601A-AA1A is a KIT with 3 contacts AWG10
Ref. YS-UC-212602A-AA1A is a KIT with 24 contacts AWG12/14
- 4 () Laser marking :
TE + Commercial reference + Year-Week
- 5 () Red paint
- 6 () Work instruction according to 118-157000-2
- 7 () Groove made to differentiate contacts
- 8 () Sleeves packaging separately and identified
- 9 () Daniels manual crimping tool :
- Hand crimper HX4
- Die Y543
Daniels pneumatic crimping tool :
- Pneumatic pump HX25
- Die Y543
- 10 () Tightening torque = 10Nm
- 11 () A label with the commercial reference and the complete BDM is glued on the cardboard
- 12 Standards :
AAR 5-512, APTA RP-E-019-99
- 13 () Key
- 14 () DRAFT ANGLE
- 15 () Packaging Specification 107-157003
- 16 () Clamping cone Rep 7 suitable with hose acc. to APTA PR-E-RP-019-99 and AAR 5512 definition 1 1/4inch in I.D. and 1 23/32 in O.D. (eg. PARKER ref. GST II BLACK 15 BAR 32x45)

Vue isométrique - Echelle 1:2
Isometric view - Scale 1:2

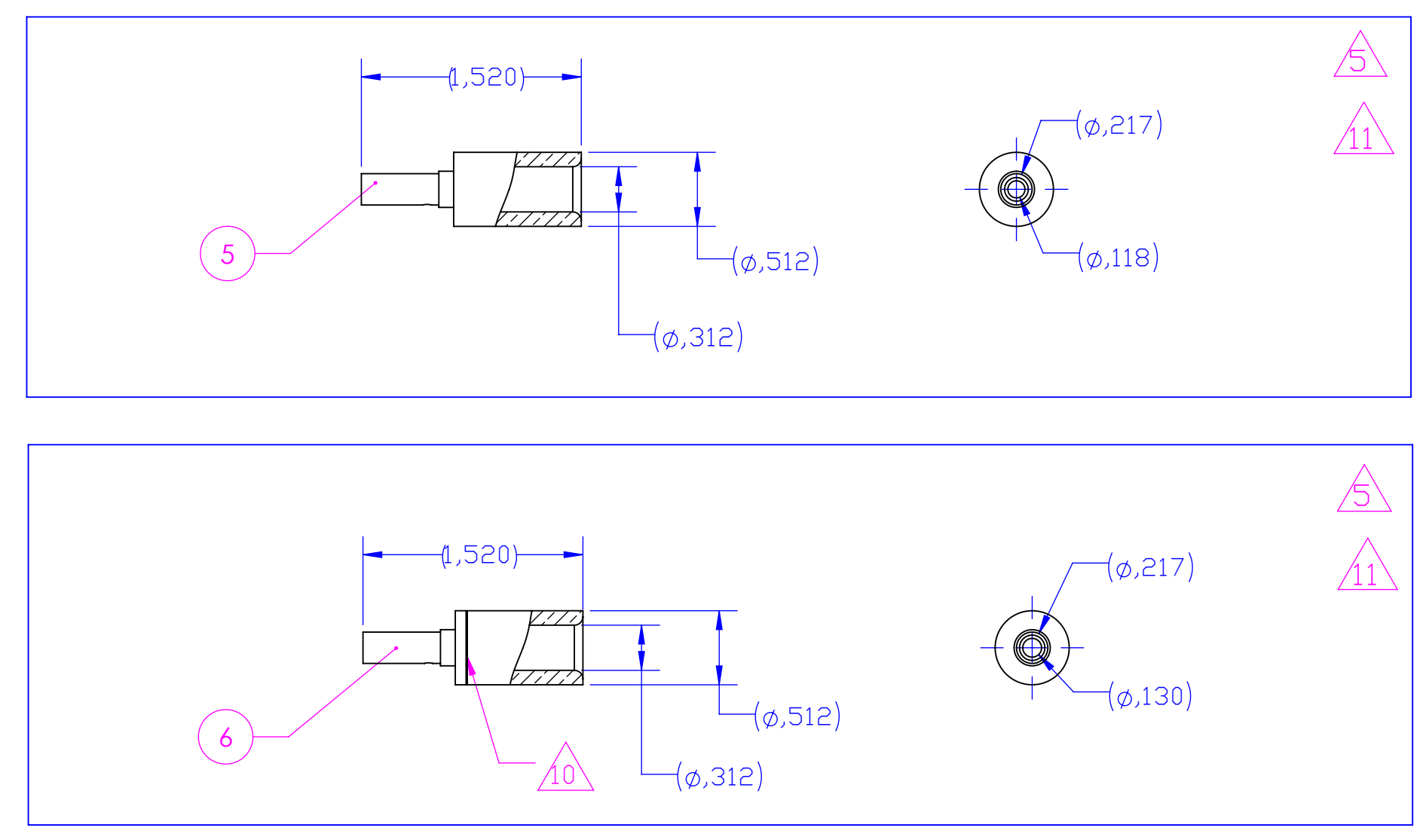
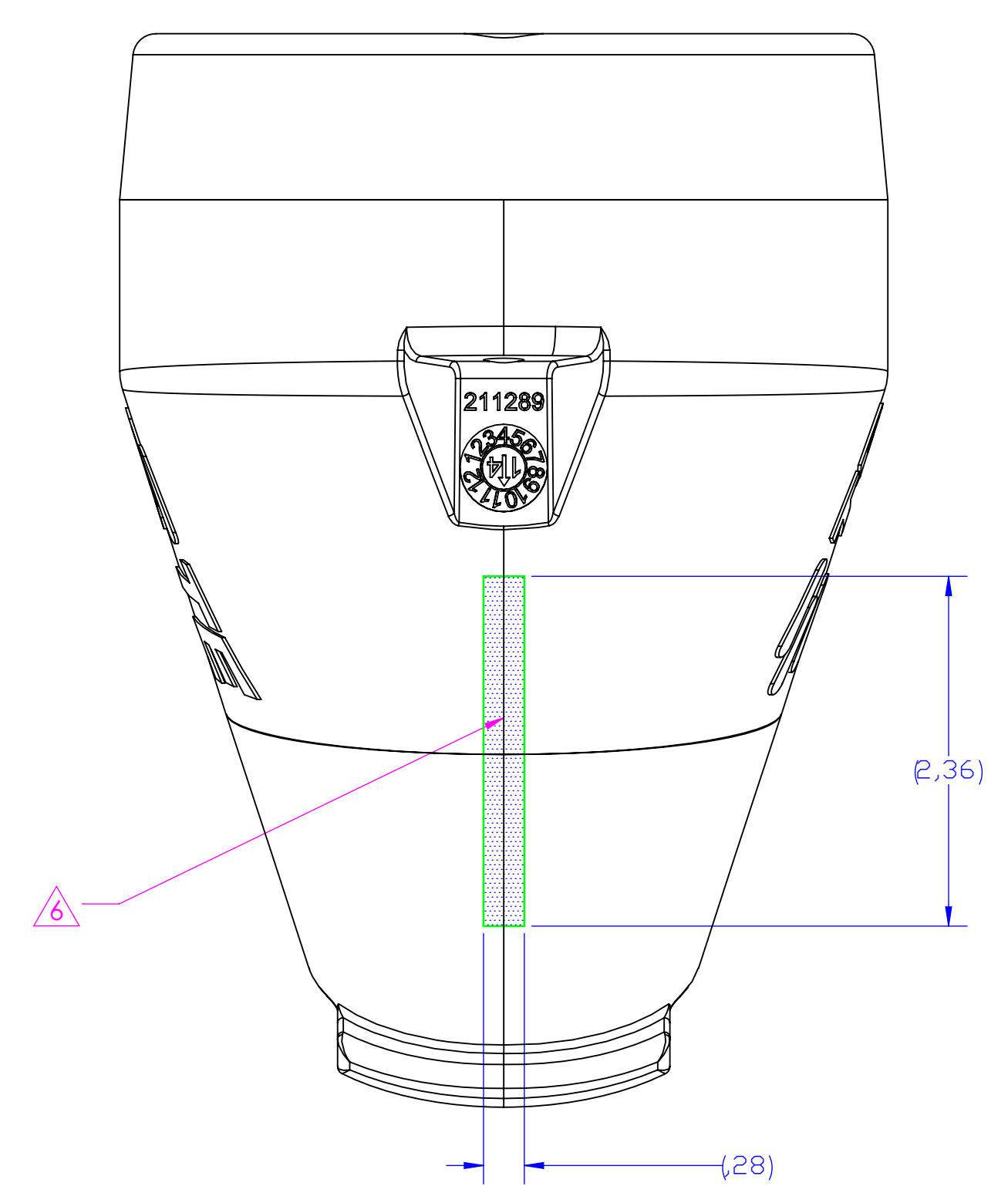
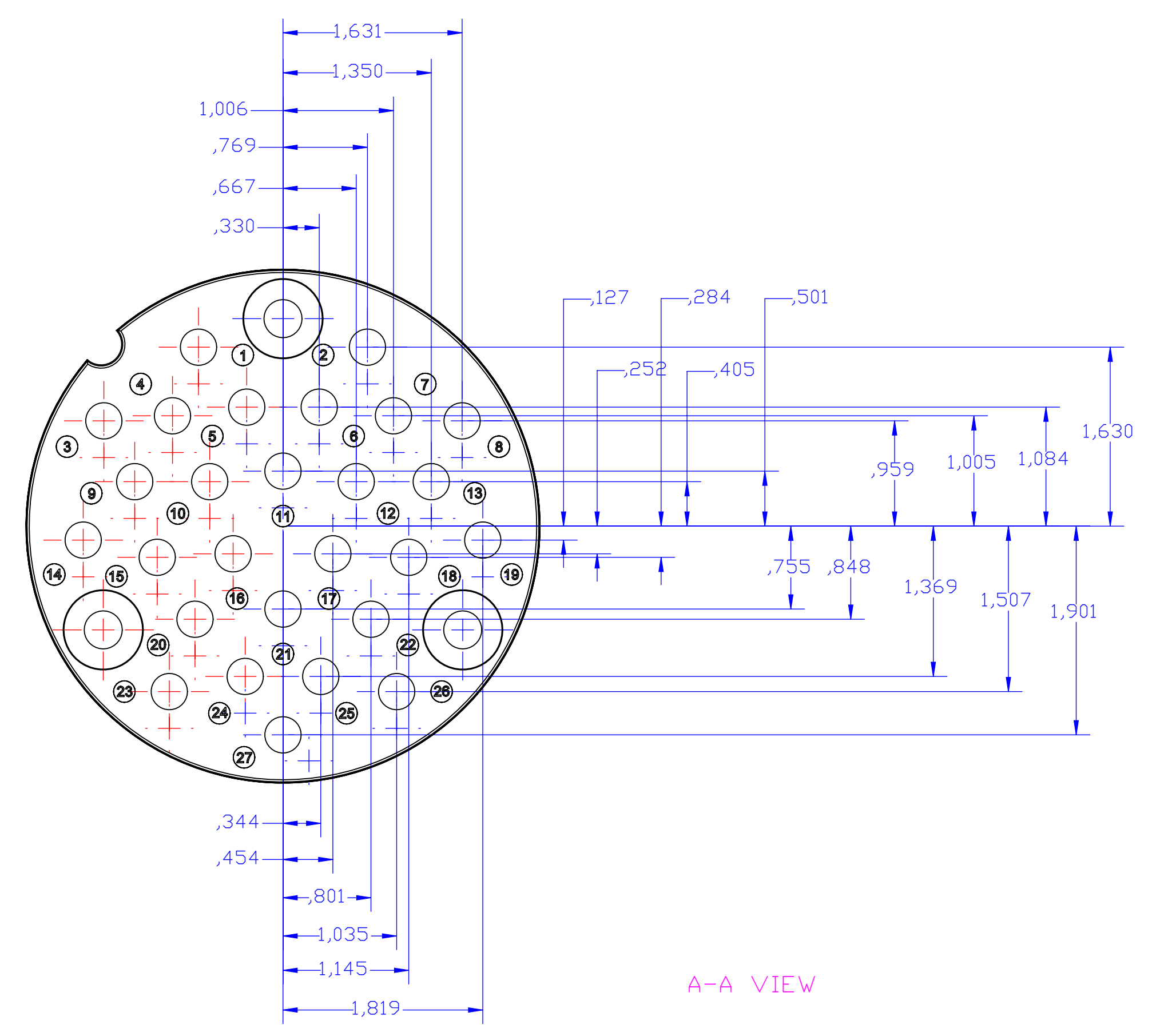


Vue isométrique - Echelle 1:2
Isometric view - Scale 1:2

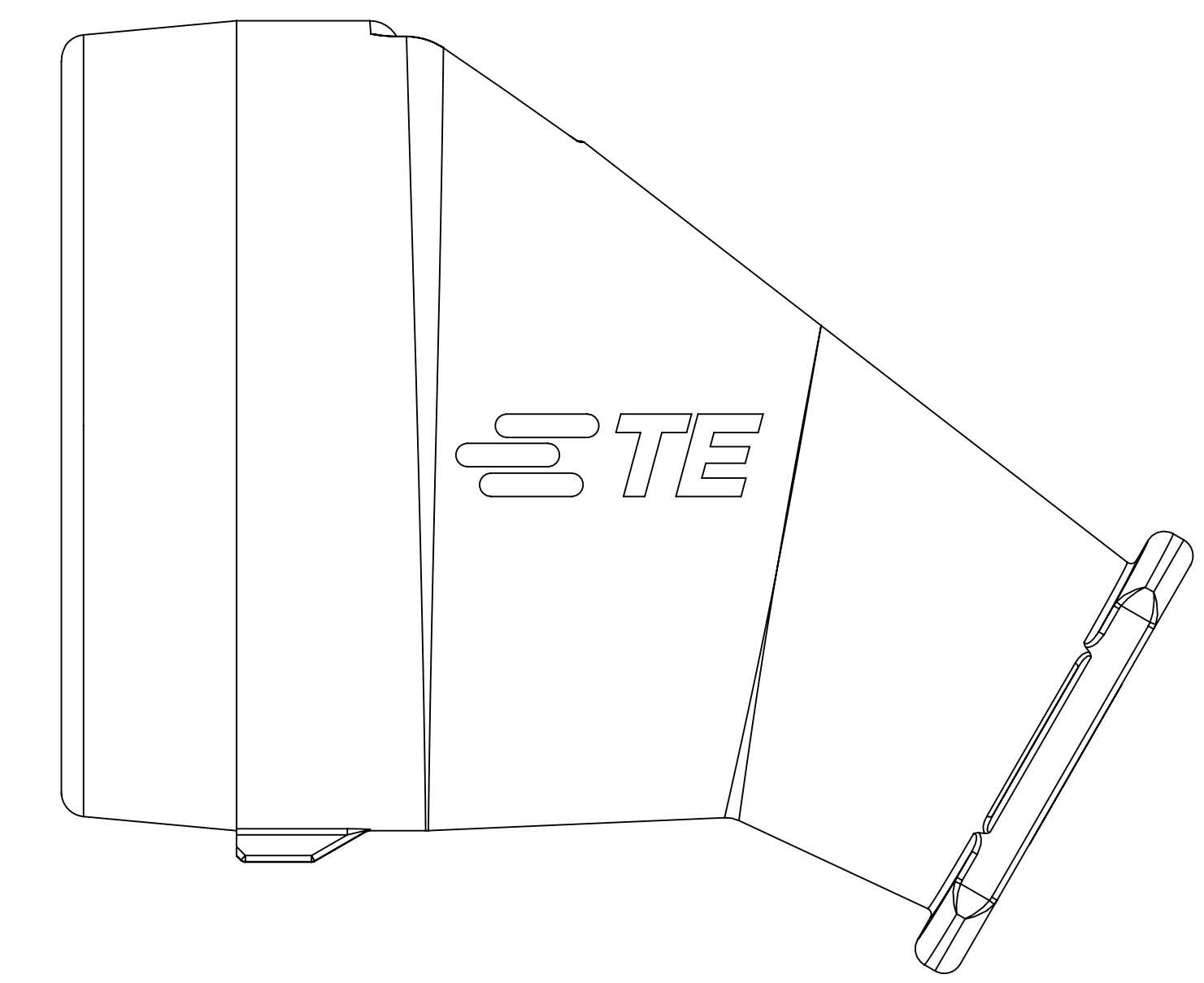
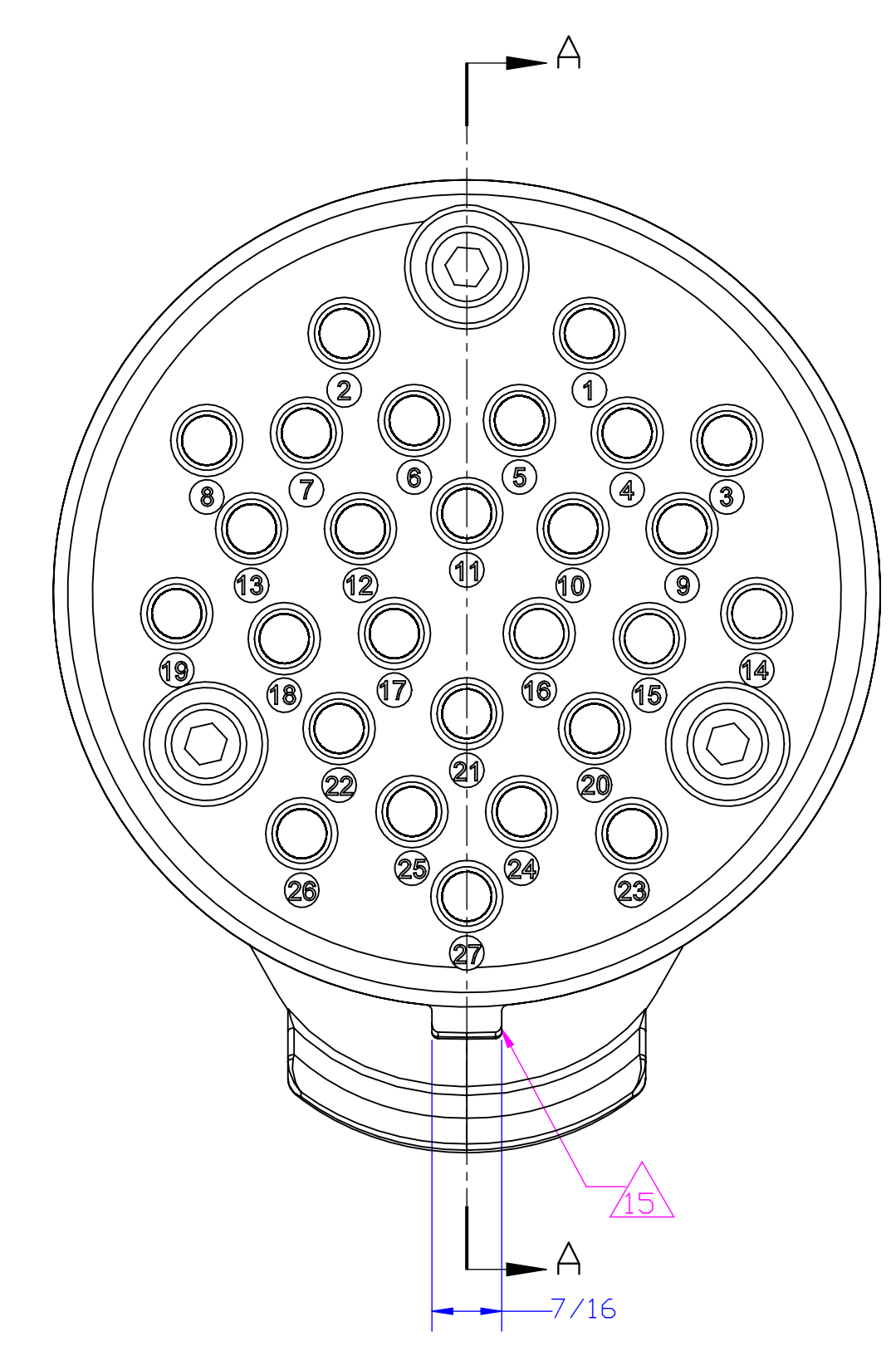
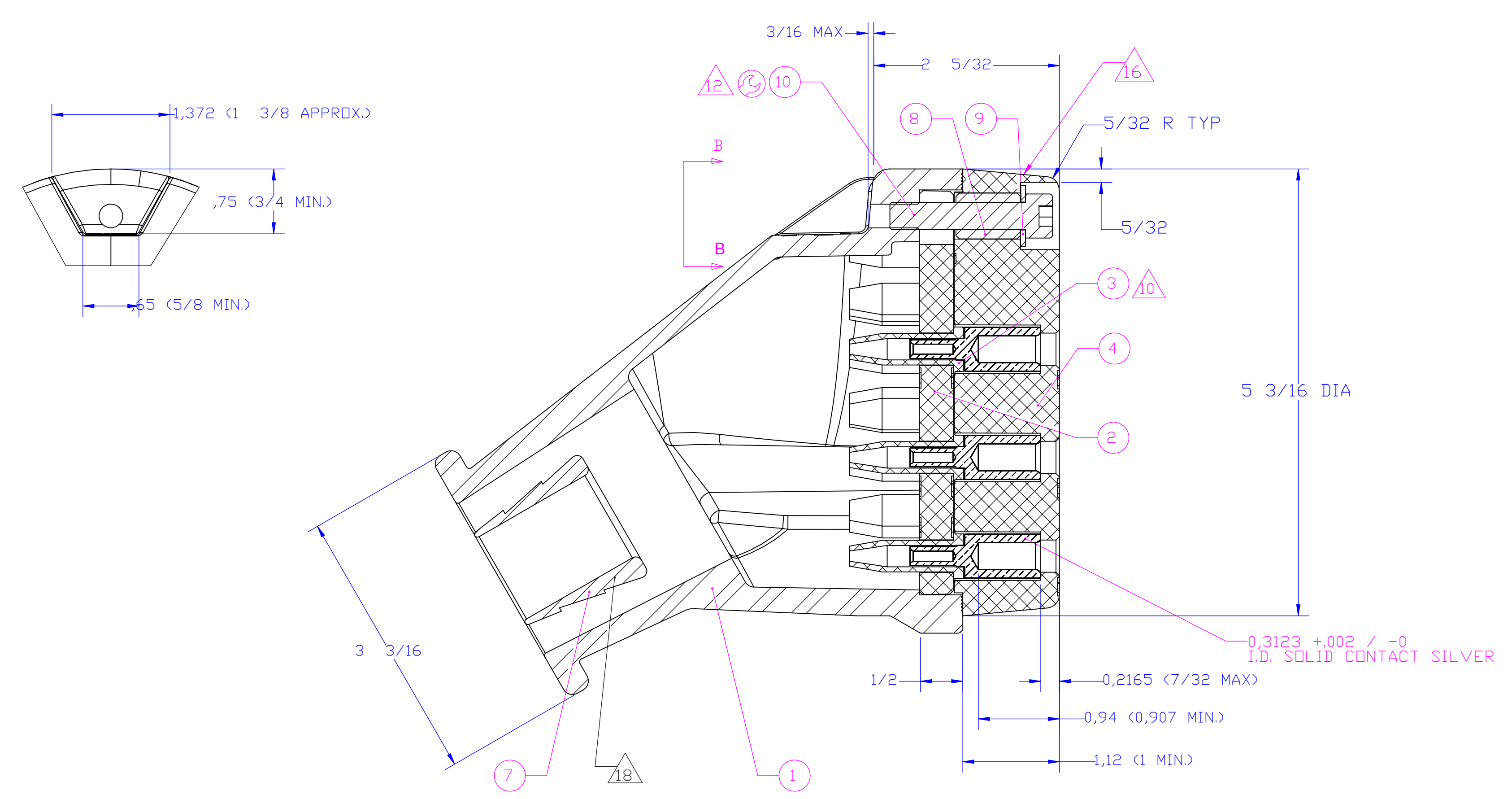


		Papier	Paper	5	1	YSPEC-408-157000-2	Instruction de montage	13									
				1,5	1	0206-0329AS	Sachet déshydratant	12									
		Carton	Carton	60	1	Y00000-0206-0217AS	Boîte en carton	11									
		Inox	Stainless steel	23,2	3	CHCM08x40-1	Vis CHC	10									
		Inox	Stainless steel	2,56	3	MU-08-1	Rondelle plate	9									
		FMME 3017	Inox	Stainless steel	1,72	3	1504-0030U4	Entretoise	8								
		FMME 4016	Aluminium	Aluminium	15,26	1	YA-UC-212590A-JQ00	Cône de serrage	7								
		Argenture	Silver plating	FMME 1001	Laiton	Brass	59,74	1	YS-UC-212601A-AA1A	KIT de 3 contacts femelle AWG 10	6						
		Argenture	Silver plating	FMME 1001	Laiton	Brass	473,57	1	YS-UC-212602A-AA1A	KIT de 24 contacts femelle AWG 12 et 14	5						
		FMEL 31017	Néoprène	Neoprene	258,63	1	YK-UC-211288A-YU00	Isolant femelle	4								
		FMEL 31016	Néoprène	Neoprene	1,4	27	1504-0008A4	Manchon	3								
		FTMP 651	Polycarbonate	Polycarbonate	124,8	1	YK-UC-211276A-QK00	Isolant mixte	2								
		Conversion Cr3	Cr3 conversion	FMME 4010	ALUMINIUM	Aluminium	1037,57	1	YF-UC-211290A-JG04	Corps de fiche - position 0	1						
Observations	Remarks	Protection	Plating	Fiche matière	Data sheet	Matière	Material	Masse (g)	Weight (g)	Nor	Qty	Codification	Part number	Désignation	Designation	REP	Item

INSULATOR VIEW
SCALE 1:1



B-B VIEW



Référence commerciale / Commercial reference : 27P-PLU-4-01

THIS DRAWING IS A CONTROLLED DOCUMENT.

DESIGNED BY	INCH	DATE	28 JUL 2015
DRAWN BY	DATE	28 JUL 2015	
CHECKED BY	DATE	28 JUL 2015	
APPROVED BY	DATE	28 JUL 2015	

PROJECT SPEC: 108-157001
APPLICATION SPEC: 408-157000-2
WEIGHT: 4.480 pound
CUSTOMER DRAWING

STE Connectivity
COMMUNICATION COMMUTER PLUG
AC - C1894-212095
SCALE: 1:1 SHEET: 1 OF 1