



Chipsmall Limited consists of a professional team with an average of over 10 year of expertise in the distribution of electronic components. Based in Hongkong, we have already established firm and mutual-benefit business relationships with customers from,Europe,America and south Asia,supplying obsolete and hard-to-find components to meet their specific needs.

With the principle of "Quality Parts,Customers Priority,Honest Operation,and Considerate Service",our business mainly focus on the distribution of electronic components. Line cards we deal with include Microchip,ALPS,ROHM,Xilinx,Pulse,ON,Everlight and Freescale. Main products comprise IC,Modules,Potentiometer,IC Socket,Relay,Connector.Our parts cover such applications as commercial,industrial, and automotives areas.

We are looking forward to setting up business relationship with you and hope to provide you with the best service and solution. Let us make a better world for our industry!



Contact us

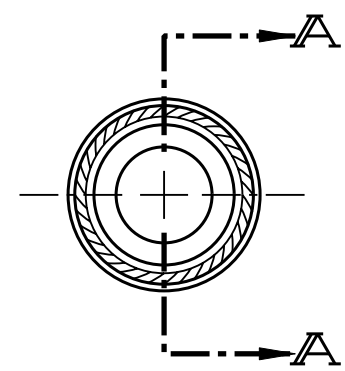
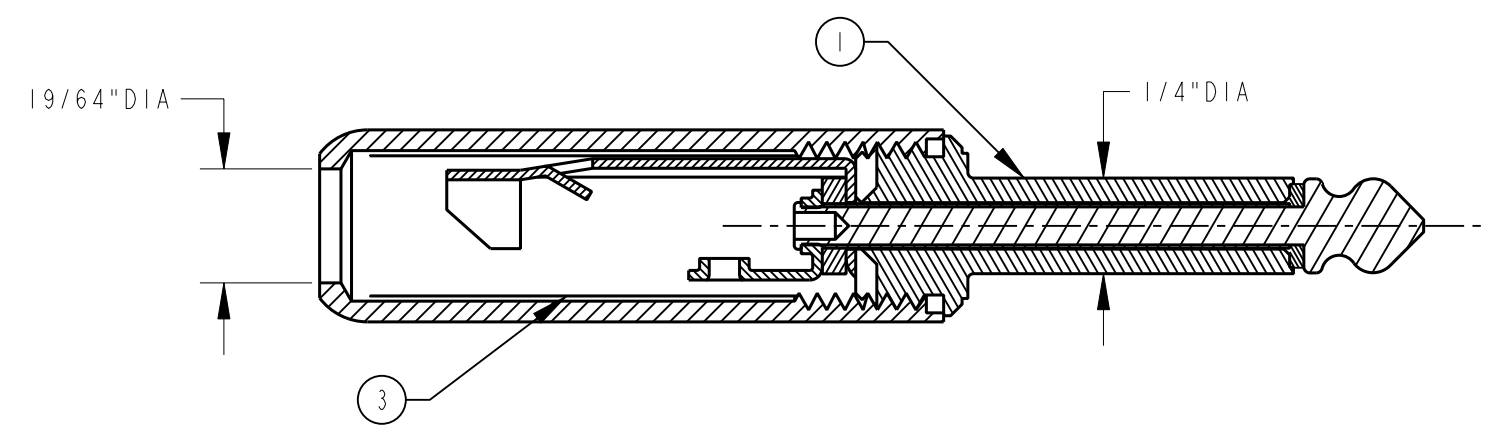
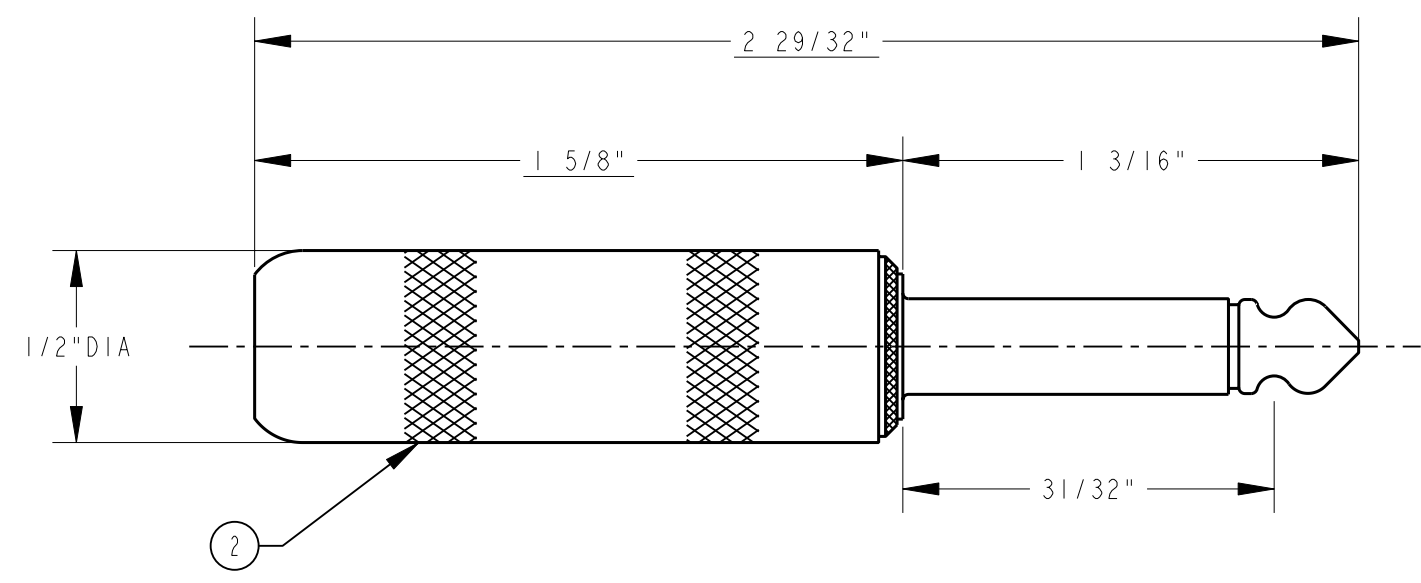
Tel: +86-755-8981 8866 Fax: +86-755-8427 6832

Email & Skype: info@chipsmall.com Web: www.chipsmall.com

Address: A1208, Overseas Decoration Building, #122 Zhenhua RD., Futian, Shenzhen, China



3	TUBING	1
2	HANDLE	1
1	PLUG ASSEMBLY	1
ITEM	DESCRIPTION	REQ'D
STOCK LIST		



SECTION A-A

MATERIALS:

- TIP AND BODY-BRASS-NICKEL PLATE.
- TERMINALS-BRASS-ELECTRO TIN PLATED
- INSULATORS-PHENOLIC
- HANDLE-BRASS-NICKEL PLATE
- TORQUE = HOLDING THE PLUG SLEEVE RIGID, A TWISTING FORCE OF 1 POUND-INCH SHALL BE APPLIED TO THE TIP, IT SHOULD NOT ROTATE OR BECOME LOOSE.

CUSTOMER DRAWING
 CAD/CAM DWG. NO. 280_CD
 SHEET 1 OF 1

ISSUE	CHANGE NO.	DATE	BY	APP'D
D	ECO #19700	3-28-95	RC	GHJ
B	CAD REDRAW WAS REV. A ECO #16155	3-20-92	ES	GHJ

★ STAR SYMBOL DENOTES CRITICAL DIMENSION. SEE S/C ENGINEERING STANDARD ES-0001					THIS DRAWING DESCRIBES A DESIGN CONSIDERED PROPRIETARY IN NATURE, DEVELOPED AND MANUFACTURED BY SWITCHCRAFT INC. AND IS RELEASED ON A CONFIDENTIAL BASIS FOR IDENTIFICATION PURPOSE ONLY.					
UNLESS OTHERWISE SPECIFIED					SIZE	WIDTH	MULT	LBS./M	TEMPER	
1. ALL DIMENSIONS IN INCHES 2. DECIMAL DIMENSIONS ±.005 3. FRACTIONAL DIMENSIONS ±1/64 4. ANGLES ±1/2° 5. ALL DIA'S CONCENTRIC WITHIN .005 T.I.R. 6. REMOVE ALL BURRS 7. MAKE NO DIMENSIONAL ALLOWANCES FOR APPLIED FINISHES, I.E., PLATING, PAINTING, ETC. 8. HOLES ON THE SAME CENTERLINE MUST BE ALIGNED WITHIN ±.002					FINISH		MATERIAL			
					SPEC. NO.		SPEC. NO.			
					FIRST USED ON		SCALE			
					1 = 0.5					
DATE DRAWN		BY	CHK'D	APP'D						
6-17-64		JRT	RB 7-15-64	EB 1-28-88						
REVISIONS					NAME		PART NO.		ISSUE	
					2 CONDUCTOR PHONE PLUG		280		D	