



Chipsmall Limited consists of a professional team with an average of over 10 year of expertise in the distribution of electronic components. Based in Hongkong, we have already established firm and mutual-benefit business relationships with customers from,Europe,America and south Asia,supplying obsolete and hard-to-find components to meet their specific needs.

With the principle of “Quality Parts,Customers Priority,Honest Operation,and Considerate Service”,our business mainly focus on the distribution of electronic components. Line cards we deal with include Microchip,ALPS,ROHM,Xilinx,Pulse,ON,Everlight and Freescale. Main products comprise IC,Modules,Potentiometer,IC Socket,Relay,Connector.Our parts cover such applications as commercial,industrial, and automotives areas.

We are looking forward to setting up business relationship with you and hope to provide you with the best service and solution. Let us make a better world for our industry!



Contact us

Tel: +86-755-8981 8866 Fax: +86-755-8427 6832

Email & Skype: info@chipsmall.com Web: www.chipsmall.com

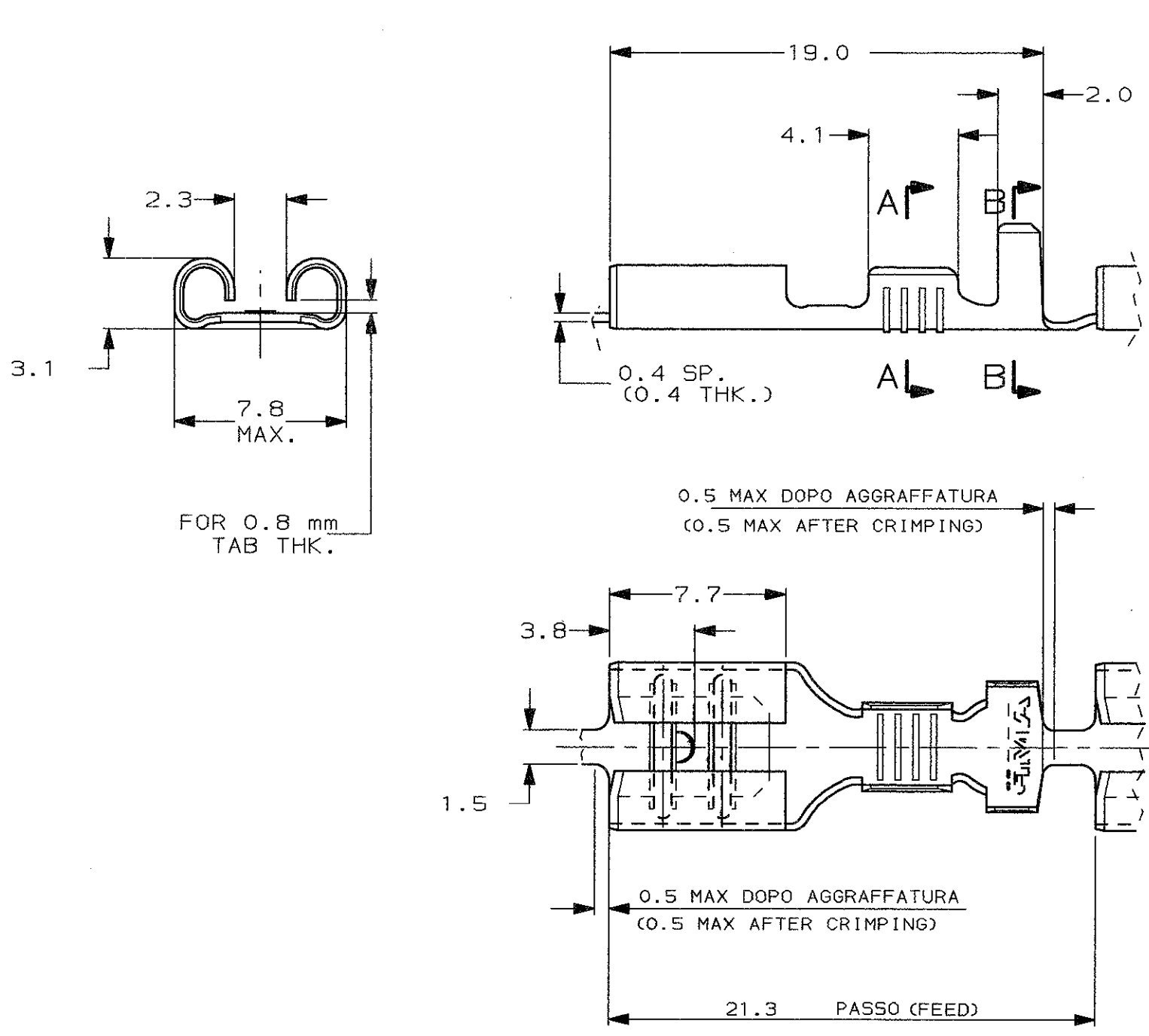
Address: A1208, Overseas Decoration Building, #122 Zhenhua RD., Futian, Shenzhen, China



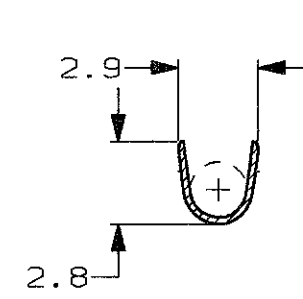
SCALA NON IMPEGNATIVA
(DO NOT SCALE)
DIMENSIONI IN mm
(DIMENSIONS IN)

METRIC

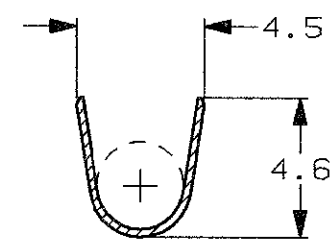
THIRD ANGLE
PROJECTION



SEZIONE A-A
(SECTION A-A)



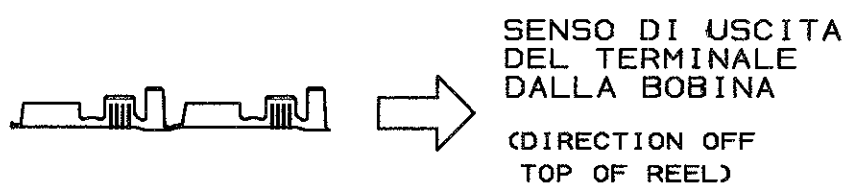
SEZIONE B-B
(SECTION B-B)



- 1) BOBINATI SU BOBINA SPECIALE (7000 PEZZI/BOBINA)
(REELED ON SPECIAL REEL (7000 PCS/REEL))
- 2) SPECIFICA DI PRODOTTO 108-20019.
(PRODUCT SPEC. 108-20019).
SPECIFICA DI AGGRAFFATURA 114-20023.
(APPLICATION SPEC. 114-20023).

-	1	NUDO (UNPLATED)	OTTONE (BRASS)	280000-7	AA
-	1	STAGNATO (TIN PLTD)	OTTONE (BRASS)	280000-6	AA
PEZZO SCIOLTO P/N (LOOSE PIECE P/N)	NOTE	FINITURA / COLORE (FINISH / COLOUR)	MATERIALE (MATERIAL)	NUMERO (PART NUMBER)	REV.

STATO DI FORNITURA -SCALA 1:1
(SUPPLYING CONDITION -SCALE 1:1-)



CUSTOMER DWG. FOR REFERENCE ONLY
DISEGNO PER CLIENTE SOLO PER RIFERIMENTO

THIS DRAWING IS UNPUBLISHED | RELEASE FOR PUBLICATION | 19

TOLLERANZE: SE NON DIVERSAMENTE SPECIFICATO (TOLERANCES: UNLESS OTHERWISE SPECIFIED)	DIAM. ISOLANTE (INS. DIA. RANGE)	RANGO FILO (WIRE RANGE)	SCALA (SCALE)
± 0.3	2.2-3.3 mm	0.3-0.8 mm ²	4:1
ANGOLI (ANGLES)	TE Connectivity		

DIS. 4 LUGLIO 96 (DR.) A. FROLA
DESCRIZIONE (DESCRIPTION) FASTON® Connector .250" sr. REC. CONTACT

CONT. 4 LUGLIO 96 (CHK) C. TARTARI
LOC. SIZE NUMERO (DWG NO) I A3 C-280000

AB1	REVISED PER ECO-11-005140	RK	31MAR11	APP. (APP.)
REV. (REV.)	REVISIONI (REVISION RECORD)	DIS. DATA (DR.)	DATA (DATE)	
				REV. (REV.)
				FOGLIO (SHEET) 1 DI (OF) 1

DISTRIBUZIONE (PRINT DIST.)