



Chipsmall Limited consists of a professional team with an average of over 10 year of expertise in the distribution of electronic components. Based in Hongkong, we have already established firm and mutual-benefit business relationships with customers from,Europe,America and south Asia,supplying obsolete and hard-to-find components to meet their specific needs.

With the principle of “Quality Parts,Customers Priority,Honest Operation,and Considerate Service”,our business mainly focus on the distribution of electronic components. Line cards we deal with include Microchip,ALPS,ROHM,Xilinx,Pulse,ON,Everlight and Freescale. Main products comprise IC,Modules,Potentiometer,IC Socket,Relay,Connector.Our parts cover such applications as commercial,industrial, and automotives areas.

We are looking forward to setting up business relationship with you and hope to provide you with the best service and solution. Let us make a better world for our industry!



Contact us

Tel: +86-755-8981 8866 Fax: +86-755-8427 6832

Email & Skype: info@chipsmall.com Web: www.chipsmall.com

Address: A1208, Overseas Decoration Building, #122 Zhenhua RD., Futian, Shenzhen, China



Surge protection device - DT-UFB-IB-RB0 - 2800056

Please be informed that the data shown in this PDF Document is generated from our Online Catalog. Please find the complete data in the user's documentation. Our General Terms of Use for Downloads are valid (<http://phoenixcontact.com/download>)




Attachment plug with surge protection for 5-conductor remote bus input. Connection: 9-pos. D-SUB socket - plug. Can alternatively be snapped onto DIN rails. Incl. 1 m cable with 9-pos. D-SUB connection.

Why buy this product

- ✓ 9-pos. D-SUB connection
- ✓ Adapter type
- ✓ DIN rail mounting possible by removing the cap
- ✓ D-SUB cable included
- ✓ For remote bus modules (remote bus OUT - RBO)



Key Commercial Data

| | |
|--------------|---|
| Packing unit | 1 STK |
| GTIN |  4 046356 462723 |
| GTIN | 4046356462723 |

Technical data

Dimensions

| | |
|--------|--------|
| Height | 110 mm |
| Width | 25 mm |
| Depth | 63 mm |

Ambient conditions

| | |
|---------------------------------|------------------|
| Ambient temperature (operation) | -40 °C ... 85 °C |
| Degree of protection | IP20 |

General

| | |
|---|---------------|
| Housing material | Zinc die-cast |
| Color | silver/black |
| Standards for clearances and creepage distances | IEC 60664-1 |
| | VDE 0110-1 |

Surge protection device - DT-UFB-IB-RB0 - 2800056

Technical data

General

| | |
|---------------------|---|
| Mounting type | Connection-specific attachment plug and DIN rail, 35 mm |
| Design | Attachment plug for DIN rail mounting |
| Number of positions | 5 |
| Direction of action | Line-Line & Line-Ground/Shield |

Protective circuit

| | |
|--|--|
| IEC test classification | B2 |
| | C1 |
| | C2 |
| | C3 |
| | D1 |
| VDE requirement class | B2 |
| | C1 |
| | C2 |
| | C3 |
| | D1 |
| Maximum continuous voltage U_C | 5.8 V DC |
| Rated current | ≤ 180 mA (25 °C) |
| Operating effective current I_C at U_C | ≤ 1 μ A |
| Residual current I_{PE} | ≤ 5 μ A |
| Nominal discharge current I_n (8/20) μ s (Core-Core) | ≤ 5 kA |
| Nominal discharge current I_n (8/20) μ s (core-earth) | ≤ 5 kA |
| Total discharge current I_{total} (8/20) μ s | 10 kA |
| Output voltage limitation at 1 kV/ μ s (core-earth) spike | ≤ 700 V |
| Output voltage limitation at 1 kV/ μ s (core-core) static | ≤ 15 V |
| Output voltage limitation at 1 kV/ μ s (core-earth) static | ≤ 700 V |
| Output voltage limitation at 1 kV/ μ s (core-GND) static | ≤ 15 V |
| Residual voltage at I_n (conductor-conductor) | ≤ 25 V |
| Residual voltage at I_n (conductor-ground) | ≤ 55 V |
| Residual voltage at I_n (conductor-GND) | ≤ 25 V |
| Voltage protection level U_p (core-core) | ≤ 16 V (B2 - 100 A) |
| | ≤ 20 V (C1 - 500 A) |
| | ≤ 60 V (C2 - 1 kA) |
| | ≤ 60 V (C2 - 5 kA) |
| Voltage protection level U_p (core-ground) | ≤ 700 V (B2 - 100 A) |
| | ≤ 700 V (C1 - 500 A) |
| | ≤ 700 V (C2 - 5 kA) |
| Response time t_A (core-core) | ≤ 1 ns |
| Response time t_A (core-earth) | ≤ 100 ns |
| Input attenuation aE, sym. | typ. 0.5 dB (≤ 5 MHz / 150 Ω) |
| | typ. 0.6 dB (≤ 10 MHz / 100/150 Ω) |

Surge protection device - DT-UFB-IB-RB0 - 2800056

Technical data

Protective circuit

| | |
|--|-----------------|
| Cut-off frequency f_g (3 dB), sym. in 100 Ohm system | ≥ 100 MHz |
| Cut-off frequency f_g (3 dB), sym. in 150 Ohm system | ≥ 100 MHz |
| Capacity (core-core) | typ. 20 pF |
| Resistance in series | typ. 7 Ω |
| Surge protection fault message | None |
| Impulse durability (conductor-conductor) | C1 - 1 kV/500 A |
| | C2 - 10 kV/5 kA |
| | B2 - 4 kV/100 A |
| Impulse durability (conductor-ground) | B2 - 4 kV/100 A |
| | C1 - 1 kV/500 A |
| | C2 - 10 kV/5 kA |
| | D1 - 1 kA |

Connection data

| | |
|-----------------------|-------------------|
| Connection method | D-SUB-9 |
| Connection method IN | D-SUB-9 socket |
| Connection method OUT | D-SUB-9 connector |
| Connection technology | Remote bus output |

Connection, equipotential bonding

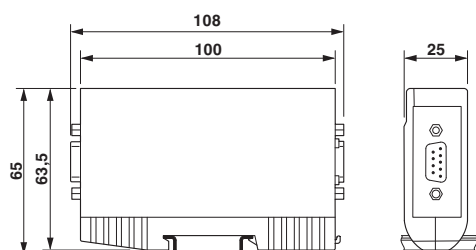
| | |
|-------------------|------------------|
| Connection method | Cable connection |
|-------------------|------------------|

Standards and Regulations

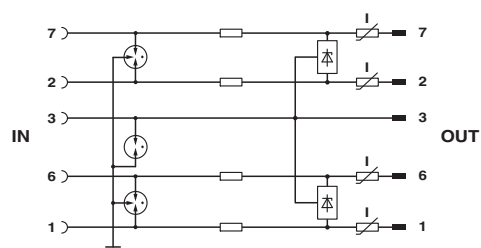
| | |
|--------------------------|----------------------|
| Standards/regulations | IEC 61643-21 |
| | DIN EN 61643-21 |
| Standards/specifications | DIN EN 61643-21 2002 |
| | IEC 61643-21 2000 |

Drawings

Dimensional drawing



Circuit diagram



Surge protection device - DT-UFB-IB-RB0 - 2800056

Approvals

Approvals

Approvals

EAC

Ex Approvals

Approval details

| | | |
|-----|---|-------------------------|
| EAC |  | RU C- DE.A*30.B01561 |
|-----|---|-------------------------|

Phoenix Contact 2017 © - all rights reserved
<http://www.phoenixcontact.com>

PHOENIX CONTACT GmbH & Co. KG
Flachsmarktstr. 8
32825 Blomberg
Germany
Tel. +49 5235 300
Fax +49 5235 3 41200
<http://www.phoenixcontact.com>