



Chipsmall Limited consists of a professional team with an average of over 10 year of expertise in the distribution of electronic components. Based in Hongkong, we have already established firm and mutual-benefit business relationships with customers from,Europe,America and south Asia,supplying obsolete and hard-to-find components to meet their specific needs.

With the principle of “Quality Parts,Customers Priority,Honest Operation,and Considerate Service”,our business mainly focus on the distribution of electronic components. Line cards we deal with include Microchip,ALPS,ROHM,Xilinx,Pulse,ON,Everlight and Freescale. Main products comprise IC,Modules,Potentiometer,IC Socket,Relay,Connector.Our parts cover such applications as commercial,industrial, and automotives areas.

We are looking forward to setting up business relationship with you and hope to provide you with the best service and solution. Let us make a better world for our industry!



## Contact us

Tel: +86-755-8981 8866 Fax: +86-755-8427 6832

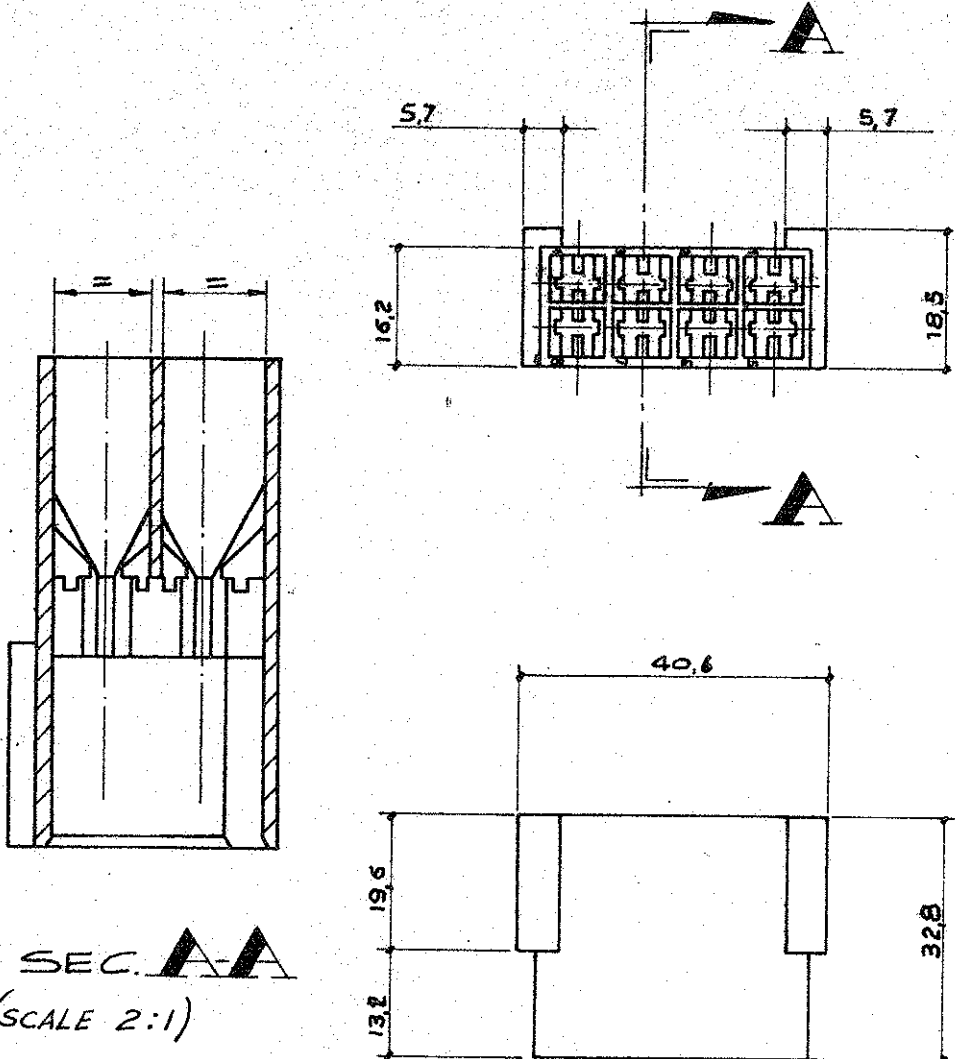
Email & Skype: info@chipsmall.com Web: www.chipsmall.com

Address: A1208, Overseas Decoration Building, #122 Zhenhua RD., Futian, Shenzhen, China



N Revised ETOO-0319-97 A.F. 05.09.1997  
 N1 ECR-10-022530 KKK FMR 07FEB11

280099



SEC. A-A  
 (SCALE 2:1)

BLACK	Poliammide 6.6	280099-5	OBSOLETE
BLUE		280099-3	OBSOLETE
RED		280099-1	OBSOLETE
CLEAR		280099-0	
COLORE	MATERIALE	P/N	

DIMENSIONS IN IN / FT. DO NOT SCALE PRINT

J	Rivisto	UB.		11-11-83
H	ADDED RED - GREEN & BLUE VERSION	R.R.		8/6/83
G	ADDED BLACK VERSION	R.R.		12/4/84
F	AGGIUNTO SEZ. A-A	RR		17/4/84
E	REVISIONATO			12-10-73
L	RIVISTO PER ECN I-2855	VP		27-5-81
LTR	REVISION RECORD	DR	CHK	DATE
DR	Torres 21-1-72	DE		
CHK	V. V. 21-1-72	APP		

© 1972 BY TE INCORPORATED. ALL RIGHTS RESERVED. TE PRODUCTS COVERED BY PATENTS AND/OR PATENTS PENDING.

CUSTOMER COPY REFERENCE ONLY

MATERIAL AND FINISH		SEE TABLE	
WIRE RANGE	INSULATION	TYPE	
—	—	—	
TOLERANCE EXCEPT AS NOTED		SCALE	LOC
.03 - 1.0		—	I
NAME		NO	REV
		A	N1



TE Connectivity

CLASS	—
TYPE	—

NO	C-280099
REV	N1

25 WAY FASTEN-ON HOUSING 250 SERIES WITHOUT EARS