



Chipsmall Limited consists of a professional team with an average of over 10 year of expertise in the distribution of electronic components. Based in Hongkong, we have already established firm and mutual-benefit business relationships with customers from,Europe,America and south Asia,supplying obsolete and hard-to-find components to meet their specific needs.

With the principle of “Quality Parts,Customers Priority,Honest Operation,and Considerate Service”,our business mainly focus on the distribution of electronic components. Line cards we deal with include Microchip,ALPS,ROHM,Xilinx,Pulse,ON,Everlight and Freescale. Main products comprise IC,Modules,Potentiometer,IC Socket,Relay,Connector.Our parts cover such applications as commercial,industrial, and automotives areas.

We are looking forward to setting up business relationship with you and hope to provide you with the best service and solution. Let us make a better world for our industry!



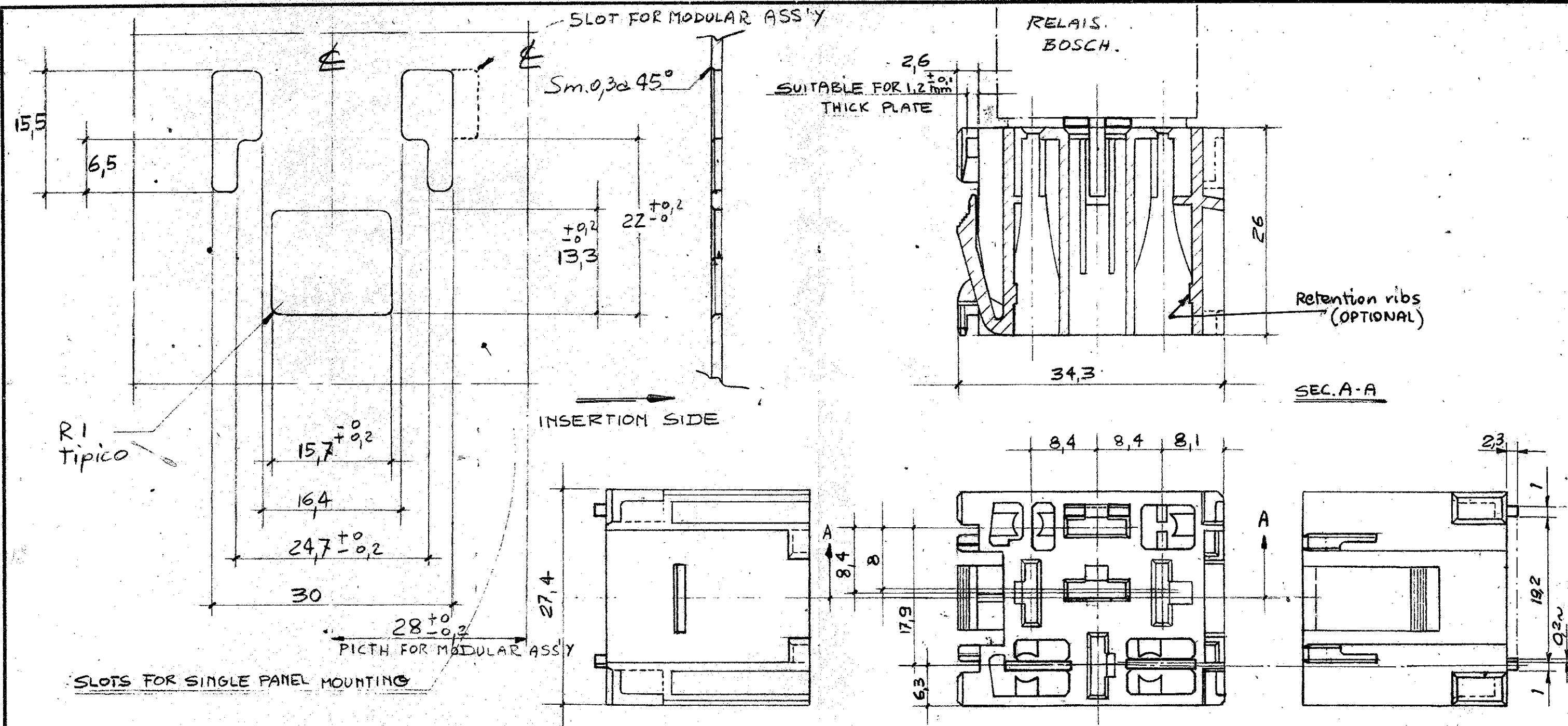
## Contact us

Tel: +86-755-8981 8866 Fax: +86-755-8427 6832

Email & Skype: info@chipsmall.com Web: www.chipsmall.com

Address: A1208, Overseas Decoration Building, #122 Zhenhua RD., Futian, Shenzhen, China





R1  
Tipico

INSERTION SIDE

SEC. A-A

SLOTS FOR SINGLE PANEL MOUNTING

PITCH FOR MODULAR ASS'Y

NO MORE THAN 2 MODULES MAY  
BE ASSEMBLED TOGETHER.

1 OBSOLETE PARTS: OBSOLETE CIS STREAMLINING PER D.RENAUD/D.SINISI

COLOUR CODE

PN. 280289	CLEAR	
PN. 280289	RED	OBsolete
PN. 280289	GREEN	
PN. 280289	BLUE	
PN. 280289	YELLOW	
PN. 280289	BLACK	
PN. 280289	BROWN	OBsolete
PN. 280289	GRAY	OBsolete
PN. 280289	VIOLET	OBsolete
PN. 280289	ORANGE	OBsolete

LTR	REVISION RECORD	DR	CHK	DATE
S1	REVISED PER ECO-09-026346	KK	AEG	NOV 09
S	Revised for ET00-0315-97	A.F.		5-9-97
F	Revised	EB		15-2-84
E	Revised	EB		22-8-83
D	ADDED DASH 9 (ORANGE)	Ref		29/12/81
C	ADDED PIVOTS	Ref		3/3/78
B	ADDED VERSIONS: BROWN-GRAY-VIOLET	Ref		13/3/74
A	RELEASED FOR PRODUCTION	B.G.		11-3-73

NUMBER	REQUIRED PER ASSEMBLY	DESCRIPTION	DWG SIZE	NUMBER	NAME	REMARKS
			© 1973 BY AMP INCORPORATED. ALL RIGHTS RESERVED. AMP PRODUCTS COVERED BY PATENTS AND/OR PATENTS PENDING.			
			DR <b>G. BENEDETTO</b> <b>7-XI-72</b>		MATERIAL AND FINISH <b>Poliammide 6.6</b>	
			CHK <i>Campano 12/1/73</i>		<b>AMP</b> AMP - ITALIA CORSO PESCHIERA 289 TORINO - ITALIA	
			DE		CLASS	
			APP		WIRE - RANGE - INSULATION + +	
			TOLERANCE EXCEPT AS NOTED $\pm 0.3 \pm 10.0$		TYPE SCALE <b>2:1</b>	
			NAME <b>MODULAR CONNECTOR FOR RELAY (BOSCH)</b>		LOC NO <b>I B 280289</b>	
					REV <b>S1</b>	

DIMENSIONS IN INCHES - DO NOT SCALE PRINT