



Chipsmall Limited consists of a professional team with an average of over 10 year of expertise in the distribution of electronic components. Based in Hongkong, we have already established firm and mutual-benefit business relationships with customers from,Europe,America and south Asia,supplying obsolete and hard-to-find components to meet their specific needs.

With the principle of "Quality Parts,Customers Priority,Honest Operation,and Considerate Service",our business mainly focus on the distribution of electronic components. Line cards we deal with include Microchip,ALPS,ROHM,Xilinx,Pulse,ON,Everlight and Freescale. Main products comprise IC,Modules,Potentiometer,IC Socket,Relay,Connector.Our parts cover such applications as commercial,industrial, and automotives areas.

We are looking forward to setting up business relationship with you and hope to provide you with the best service and solution. Let us make a better world for our industry!



Contact us

Tel: +86-755-8981 8866 Fax: +86-755-8427 6832

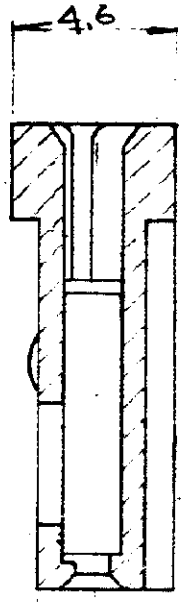
Email & Skype: info@chipsmall.com Web: www.chipsmall.com

Address: A1208, Overseas Decoration Building, #122 Zhenhua RD., Futian, Shenzhen, China



NUMBER
280360

PRELIMINARY

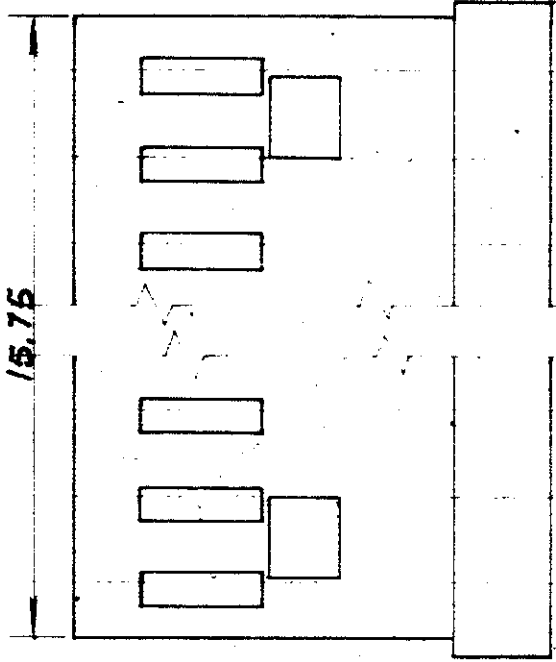
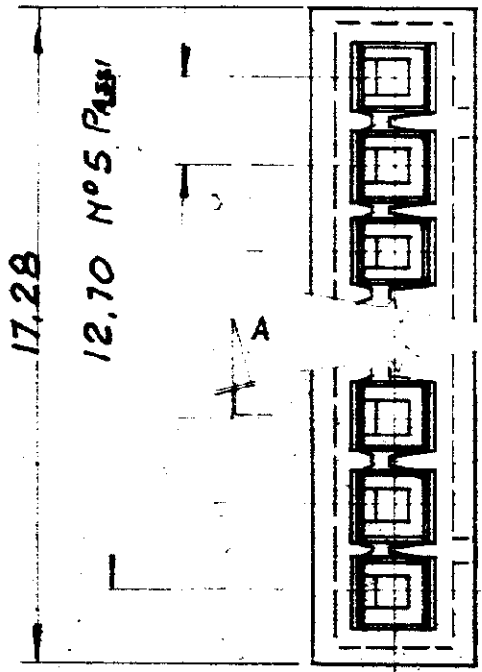


SEZ. A-A

13.8


2.54 (PASSO)

3.1



DIMENSIONS IN MM, DO NOT SCALE PRINT

PRINT DIST

				CUSTOMER COPY REFERENCE ONLY						
MATERIAL AND FINISH FOLIC. NATURALE				 TE Connectivity						
				CLASS						
P	REVISED PER ECO-11-005294	RK	HMR	106APR	11	WIRE RANGE	INSULATION	TYPE		
LTR	REVISION RECORD	DR	CHK	DATE		TOLERANCE EXCEPT AS NOTED ± 0.4	SCALE 5:1	LOC I A	NO 280360	REV P
DR	<i>E. V. ...</i>	DE				NAME 6 POS. SINGLE AMP MODU II REC. HOUSING				
CHK	<i>Revised 12-9-73</i>	APP								