



Chipsmall Limited consists of a professional team with an average of over 10 year of expertise in the distribution of electronic components. Based in Hongkong, we have already established firm and mutual-benefit business relationships with customers from,Europe,America and south Asia,supplying obsolete and hard-to-find components to meet their specific needs.

With the principle of "Quality Parts,Customers Priority,Honest Operation,and Considerate Service",our business mainly focus on the distribution of electronic components. Line cards we deal with include Microchip,ALPS,ROHM,Xilinx,Pulse,ON,Everlight and Freescale. Main products comprise IC,Modules,Potentiometer,IC Socket,Relay,Connector.Our parts cover such applications as commercial,industrial, and automotives areas.

We are looking forward to setting up business relationship with you and hope to provide you with the best service and solution. Let us make a better world for our industry!



Contact us

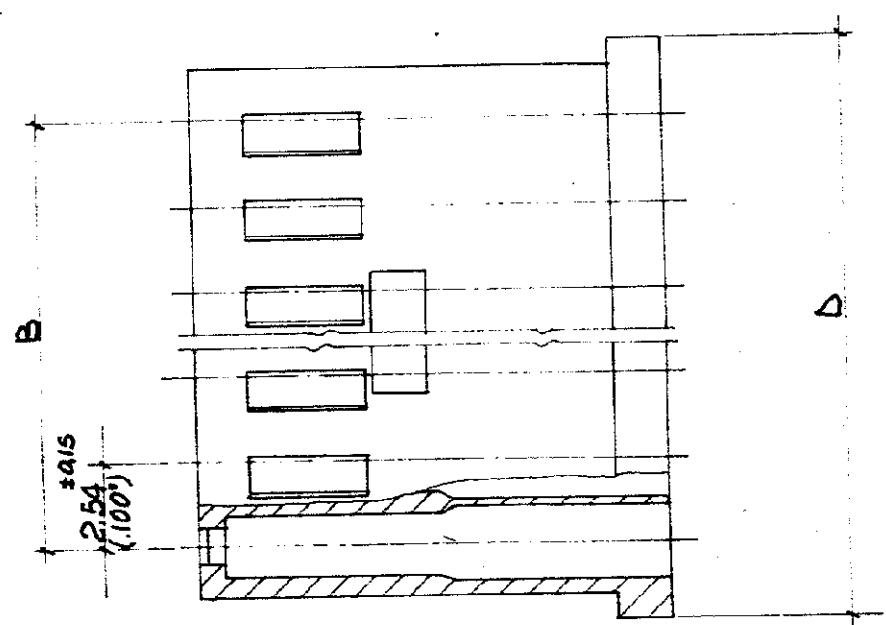
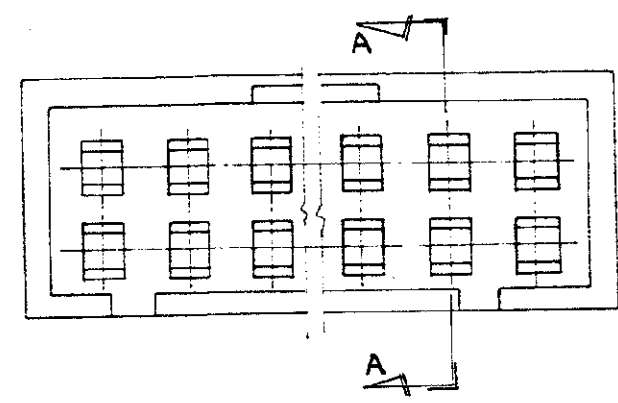
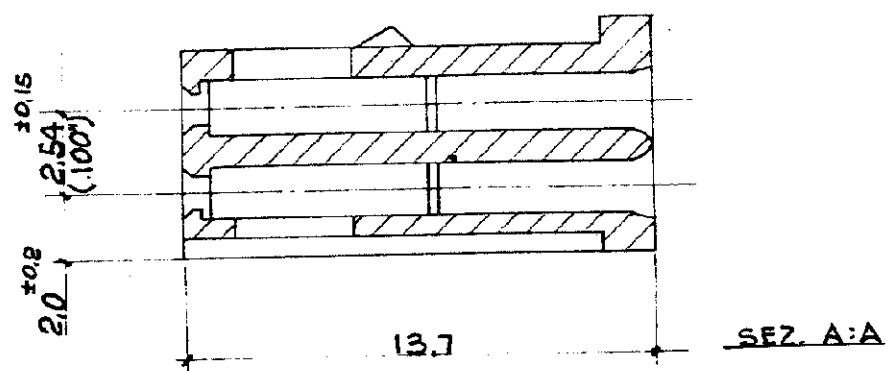
Tel: +86-755-8981 8866 Fax: +86-755-8427 6832

Email & Skype: info@chipsmall.com Web: www.chipsmall.com

Address: A1208, Overseas Decoration Building, #122 Zhenhua RD., Futian, Shenzhen, China



PRINT DATA DIMENSIONS IN mm DO NOT SCALE PRINT



22	280369	№21 PRSGH 2.54	57.9
15	280368	14	40.1
12	280515	11	32.5
9	280513	8	24.9
8	280366	7	22.3
4	280365	3	12.2
NO VIE	NUMERO	B	D

REV.	DESCRIPTION	BY	CHK	DATE
P	REVISED PER ECO-11-005294	RK	HMR	19 APR 11
LTR	REVISION RECORD	DR	CHK	DATE

C-280366(VED.TAB.)

REQUIRED PER ASSEMBLY		DWG SIZE		ITEM NO	
DESCRIPTION		MATERIAL AND FINISH		CUSTOMER COPY REFERENCE ONLY	
DR RANESI 27-5-75		NORYL - NERO		TE Connectivity CLASS ——— TYPE ———	
CHK <i>Scavini</i> 16-7-75		WIRE - RANGE - INSULATION		LOG NO	
DE <i>Scavini</i> 16-7-75		TOLERANCE EXCEPT AS NOTED ±0.3 ± 0.0		I B C-280366(VED.TAB.) P	
APP Batello 16/7/75		SCALE 5:1		REV. NAME	
				4-8-9-12-15-22 POS. DOUBLE ROW REC. HSG.	