



Chipsmall Limited consists of a professional team with an average of over 10 year of expertise in the distribution of electronic components. Based in Hongkong, we have already established firm and mutual-benefit business relationships with customers from,Europe,America and south Asia,supplying obsolete and hard-to-find components to meet their specific needs.

With the principle of “Quality Parts,Customers Priority,Honest Operation,and Considerate Service”,our business mainly focus on the distribution of electronic components. Line cards we deal with include Microchip,ALPS,ROHM,Xilinx,Pulse,ON,Everlight and Freescale. Main products comprise IC,Modules,Potentiometer,IC Socket,Relay,Connector.Our parts cover such applications as commercial,industrial, and automotives areas.

We are looking forward to setting up business relationship with you and hope to provide you with the best service and solution. Let us make a better world for our industry!



Contact us

Tel: +86-755-8981 8866 Fax: +86-755-8427 6832

Email & Skype: info@chipsmall.com Web: www.chipsmall.com

Address: A1208, Overseas Decoration Building, #122 Zhenhua RD., Futian, Shenzhen, China



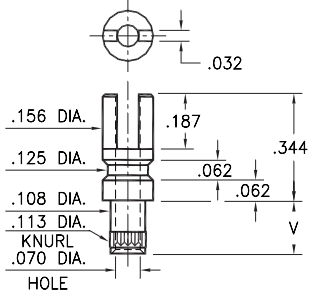
MALE PCB PINS

SOLDER TERMINALS SLOTTED

2715

2715-X-01-XX-00-00-07-0

Swage mount in .116 hole

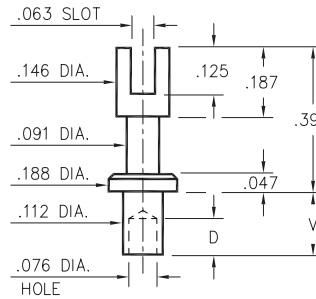


Basic Part Number	Board Thickness	Length V
2715-2	.062	.109
2715-3	.094	.141
2715-4	.125	.172

2809

2809-X-01-XX-00-00-07-0

Swage mount in .116 hole

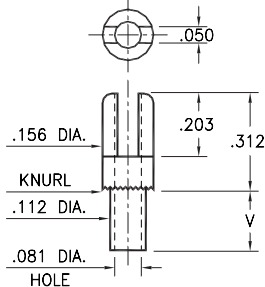


Basic Part Number	Board Thickness	Length V	Depth D
2809-1	.031	.078	.068
2809-2	.062	.109	.098
2809-3	.094	.141	.098
2809-4	.125	.172	.098

2701

2701-X-01-XX-00-00-07-0

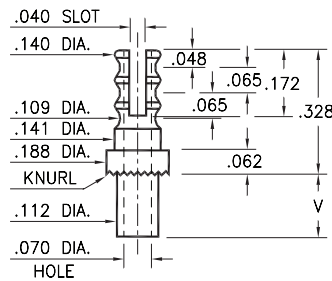
Swage mount in .116 hole



2808

2808-X-01-XX-00-00-07-0

Swage mount in .116 hole

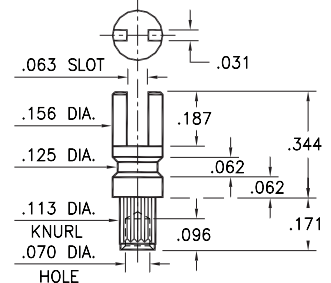


Basic Part Number	Board Thickness	Length V
2XXX-1	.031	.075
2XXX-2	.062	.105
2XXX-3	.094	.135
2XXX-4	.125	.165

2762

2762-4-01-XX-00-00-07-0

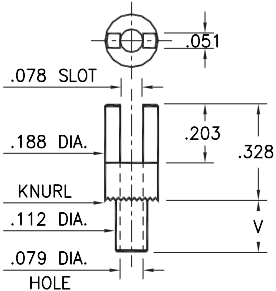
Swage mount in .116 hole
For a .125 thick board



2807

2807-X-01-XX-00-00-07-0

Swage mount in .116 hole

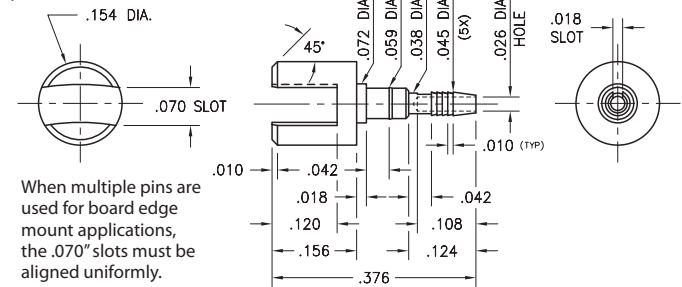


Basic Part Number	Board Thickness	Length V
2807-1	.031	.078
2807-2	.062	.109
2807-3	.094	.140
2807-4	.125	.171

3622

3622-0-32-15-00-00-03-0

Slotted compliant tail press-fit in .040 ± .003 plated hole. For .060" → .100" thick board



When multiple pins are used for board edge mount applications, the .070" slots must be aligned uniformly.

SPECIFICATIONS:

Pin Material: Brass Alloy 360, 1/2 Hard
(Swage pins are annealed)

Dimensions: Inches

Tolerances On: Lengths: ± .005
Diameters: ± .002
Angles: ± 2°



ORDER CODE: **XXXX - X - XX - XX - 00 - 00 - 07 - 0**

BASIC PART #

SPECIFY PIN FINISH:

Part #3622 plating ONLY

- 01 200 μ" TIN/LEAD OVER NICKEL
- 15 10 μ" GOLD OVER NICKEL (RoHS)
- 80 200 μ" TIN OVER NICKEL (RoHS)
- 44 300 μ" SILVER OVER COPPER (RoHS)
- 50 300 μ" ELECTRO-SOLDER (60/40 SnPb)

