



Chipsmall Limited consists of a professional team with an average of over 10 year of expertise in the distribution of electronic components. Based in Hongkong, we have already established firm and mutual-benefit business relationships with customers from,Europe,America and south Asia,supplying obsolete and hard-to-find components to meet their specific needs.

With the principle of “Quality Parts,Customers Priority,Honest Operation,and Considerate Service”,our business mainly focus on the distribution of electronic components. Line cards we deal with include Microchip,ALPS,ROHM,Xilinx,Pulse,ON,Everlight and Freescale. Main products comprise IC,Modules,Potentiometer,IC Socket,Relay,Connector.Our parts cover such applications as commercial,industrial, and automotives areas.

We are looking forward to setting up business relationship with you and hope to provide you with the best service and solution. Let us make a better world for our industry!



Contact us

Tel: +86-755-8981 8866 Fax: +86-755-8427 6832

Email & Skype: info@chipsmall.com Web: www.chipsmall.com


Address: A1208, Overseas Decoration Building, #122 Zhenhua RD., Futian, Shenzhen, China



C-UFB- 5DC/E-LAN

Order No.: 2809487

<http://eshop.phoenixcontact.de/phoenix/treeViewClick.do?UID=2809487>Attachment plug with surge protection for LAN interfaces, connection:
BNC female/male connector**Commercial data**

GTIN (EAN)	
sales group	J401
Pack	10 pcs.
Customs tariff	85363010
Catalog page information	Page 121 (TT-2007)

Product notesWEEE/RoHS-compliant since:
03/01/2008

<http://www.download.phoenixcontact.com>
Please note that the data given here has been taken from the online catalog. For comprehensive information and data, please refer to the user documentation. The General Terms and Conditions of Use apply to Internet downloads.

Technical data**General**

Housing material	Aluminum
Color	black
Standards for air and creepage distances	VDE 0110-1
	IEC 60664-1: 1992-10
Total surge current (8/20) μ s	10 kA

Ambient temperature (operation)	-40 °C ... 80 °C
Mounting type	Connection-specific intermediate plugging
Design	Attachment plug
Number of positions	1
Degree of protection	IP20
Direction of action	Line-Signal Ground/Shield & Signal Ground/Shield-Earth Ground
Width	25.40 mm
Height	93.00 mm
Length	25.40 mm
Protective circuit	
IEC category	C2
	C3
	D1
VDE requirement class	C2
	C3
	D1
Maximum continuous voltage U_C (wire-wire)	- 7.5 V DC (core-shield)
Maximum continuous voltage U_C (wire-shield)	0.5 V DC (- 7.5 V DC)
Nominal current I_N	500 mA (25°C)
Operating effective current I_C at U_C	$\leq 100 \mu\text{A}$
Ground conductor current I_{PE}	$\leq 1 \mu\text{A}$
Nominal discharge surge current I_n (8/20) μs (Core-Earth)	10 kA
Nominal discharge surge current I_n (8/20) μs (Core-Shield)	10 kA
Nominal discharge surge current I_n (8/20) μs (Shield-Earth)	10 kA
Total surge current (8/20) μs	10 kA
Output voltage limitation at 1 kV/ μs (Core-Earth) spike	$\leq 600 \text{ V}$
Output voltage limitation at 1 kV/ μs (Core-Core) static	$\leq 12 \text{ V}$
Output voltage limitation at 1 kV/ μs (Core-Earth) static	$\leq 600 \text{ V}$
Residual voltage at I_n , (conductor-conductor)	$\leq 25 \text{ V}$
Residual voltage at I_n , (conductor-ground)	$\leq 400 \text{ V}$
Protection level U_P (Core-Core)	$\leq 25 \text{ V}$ (core-shield)

Protection level U_p (Core-Earth)	≤ 600 V
Response time t_A (Core-Core)	≤ 1 ns
Response time t_A (Core-Earth)	≤ 100 ns
Input attenuation a_E , asym.	0.3 dB (≤ 40 MHz / 50Ω)
Cut-off frequency f_g (3 dB), asym. (PE) in 100 Ohm system	Typ. 200 MHz (50Ω / core shield)
Cut-off frequency f_g (3 dB), asym. (shield) in 100 Ohm system	Typ. 200 MHz (50Ω)
Capacity (Core-GND)	25 pF ($f = 1$ MHz / $V_R = 0$ V)
Resistance in series	$2.35 \Omega \pm 10 \%$
Surge carrying capacity in acc. with IEC 61643-21 (Core-Core)	C2 (10 kV/5 kA)
Surge carrying capacity in acc. with IEC 61643-21 (Core-Earth)	C2 (10 kV/5 kA)
	D1 (2.5 kA)

Connection data

Type of connection	BNC 50Ω
Connection type IN	BNC socket
Connection type OUT	BNC plug

Connection, protective circuit

Standards/regulations	IEC 61643-21
-----------------------	--------------

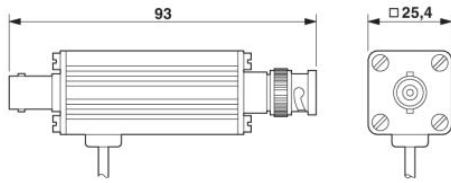
Certificates / Approvals

Certification

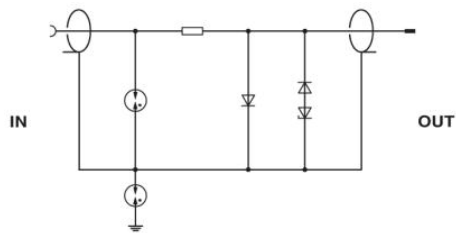
GOST

Diagrams/Drawings

Dimensioned drawing



Circuit diagram



Address

PHOENIX CONTACT Deutschland GmbH
Flachmarktstr. 8
32825 Blomberg, Germany
Phone +49 5235 3 12000
Fax +49 5235 3 41200
<http://www.phoenixcontact.de>



© 2010 Phoenix Contact
Technical modifications reserved;