



Chipsmall Limited consists of a professional team with an average of over 10 year of expertise in the distribution of electronic components. Based in Hongkong, we have already established firm and mutual-benefit business relationships with customers from,Europe,America and south Asia,supplying obsolete and hard-to-find components to meet their specific needs.

With the principle of “Quality Parts,Customers Priority,Honest Operation,and Considerate Service”,our business mainly focus on the distribution of electronic components. Line cards we deal with include Microchip,ALPS,ROHM,Xilinx,Pulse,ON,Everlight and Freescale. Main products comprise IC,Modules,Potentiometer,IC Socket,Relay,Connector.Our parts cover such applications as commercial,industrial, and automotives areas.

We are looking forward to setting up business relationship with you and hope to provide you with the best service and solution. Let us make a better world for our industry!



Contact us

Tel: +86-755-8981 8866 Fax: +86-755-8427 6832

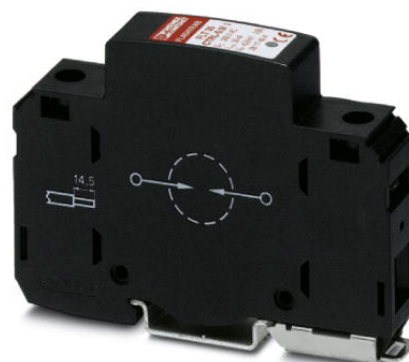
Email & Skype: info@chipsmall.com Web: www.chipsmall.com

Address: A1208, Overseas Decoration Building, #122 Zhenhua RD., Futian, Shenzhen, China



FLT 35 CTRL-0.9


Order No.: 2817411



<http://eshop.phoenixcontact.de/phoenix/treeViewClick.do?UID=2817411>

Type 1 / Class I / B arrester (lightning current arrester) with encapsulated arc chopping spark gap and ignition electronics, 1-channel. Housing width: 17.5 mm (1 Div.)

Commercial data

GTIN (EAN)	 4 017918 810726
sales group	J013
Pack	1 pcs.
Customs tariff	85363030
Catalog page information	Page 19 (TT-2007)

Product notes

WEEE/RoHS-compliant since:
05/16/2006



<http://www.download.phoenixcontact.com>
Please note that the data given here has been taken from the online catalog. For comprehensive information and data, please refer to the user documentation. The General Terms and Conditions of Use apply to Internet downloads.

Technical data

Standards

Housing material	PA
Inflammability class acc. to UL 94	V0
Color	black

Degree of protection	IP20
Mounting type	DIN rail: 35 mm
Design	Rail-mountable module, one-piece
Ambient temperature (operation)	-40 °C ... 85 °C
Permissible humidity (operation)	≤ 95 %
Direction of action	1L-N/PE
Width	17.70 mm
Height	65.50 mm
Length	89.80 mm
Pitch unit	1 Div.

Protective circuit

IEC category	I
	T1
EN type	T1
Nominal voltage U_N	230 V AC
Arrester rated voltage U_C	260 V AC
Arrester rated voltage U_C (L-N)	260 V AC
Arrester rated voltage U_C (L-PEN)	260 V AC
Nominal frequency f_N	50 Hz
	60 Hz
Ground conductor current I_{PE}	≤ 0.5 mA
Operating effective current I_C at U_N	≤ 0.5 mA
Nominal discharge surge current I_n (8/20) μ s	35 kA
Nominal discharge surge current I_n (8/20) μ s (L-N)	35 kA
Nominal discharge surge current I_n (8/20) μ s (L-PEN)	35 kA
Lightning test current (10/350) μ s, charge	17.5 As
Lightning test current (10/350) μ s, specific energy	305.00 kJ/ Ω
Lightning test current (10/350) μ s, peak value I_{imp}	35 kA
100% lightning impulse sparkover voltage (1.2/50) μ s	≤ 0.9 kV
Protection level U_p	≤ 0.9 kV
Protection level U_p (L-N)	≤ 0.9 kV
Protection level U_p (L-PEN)	≤ 0.9 kV
Response time	≤ 100 ns

Response time (L-N)	≤ 100 ns
	≤ 100 ns
Max. required backup fuse with branch wiring	125 A (gL)
Short-circuit resistance I _p with max. backup fuse (effective)	25 kA
Short-circuit current self-quenching	3 kA (260 V)
Follow current quenching capacity I _f (L-N)	3 kA
Follow current quenching capacity I _f (L-PE)	3 kA

Connection, protective circuit

Type of connection	Screw connection
Connection type IN	Biconnect screw terminal block
Connection type OUT	Biconnect screw terminal block
Connection method	Biconnect terminal block
Screw thread	M5
Tightening torque	4.5 Nm
Stripping length	14.5 mm
Conductor cross section stranded min.	0.5 mm ²
Conductor cross section stranded max.	25 mm ²
Conductor cross section solid min.	0.5 mm ²
Conductor cross section solid max.	35 mm ²
Conductor cross section AWG/kcmil min.	20
Conductor cross section AWG/kcmil max	2

Environmental conditions

Standards/regulations	IEC 61643-1
	E DIN VDE 0675-6
	E DIN VDE 0675-6/A1
	E DIN VDE 0675-6/A2
	IEC 61312-1

Certificates / Approvals



Certification

GOST

Accessories

Item	Designation	Description
------	-------------	-------------

Assembly

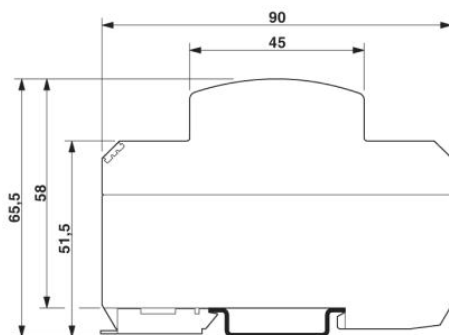
3022218	CLIPFIX 35	Snap-on end bracket, for 35 mm NS 35/7.5 or NS 35/15 DIN rail, can be fitted with Zack strip ZB 8 and ZB 8/27, terminal strip marker KLM 2 and KLM, width: 9.5 mm, color: gray
---------	------------	--

Marking

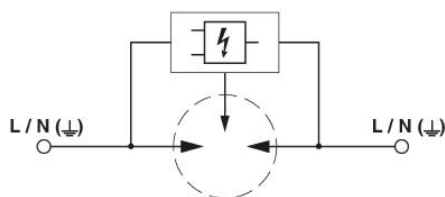
1051993	B-STIFT	Marker pen, for manual labeling of unprinted Zack strips, smear-proof and waterproof, line thickness 0.5 mm
---------	---------	---

Diagrams/Drawings

Dimensioned drawing



Circuit diagram



Address

PHOENIX CONTACT Deutschland GmbH
Flachmarktstr. 8
32825 Blomberg, Germany
Phone +49 5235 3 12000
Fax +49 5235 3 41200
<http://www.phoenixcontact.de>



© 2011 Phoenix Contact
Technical modifications reserved;