



Chipsmall Limited consists of a professional team with an average of over 10 year of expertise in the distribution of electronic components. Based in Hongkong, we have already established firm and mutual-benefit business relationships with customers from,Europe,America and south Asia,supplying obsolete and hard-to-find components to meet their specific needs.

With the principle of “Quality Parts,Customers Priority,Honest Operation,and Considerate Service”,our business mainly focus on the distribution of electronic components. Line cards we deal with include Microchip,ALPS,ROHM,Xilinx,Pulse,ON,Everlight and Freescale. Main products comprise IC,Modules,Potentiometer,IC Socket,Relay,Connector.Our parts cover such applications as commercial,industrial, and automotives areas.

We are looking forward to setting up business relationship with you and hope to provide you with the best service and solution. Let us make a better world for our industry!



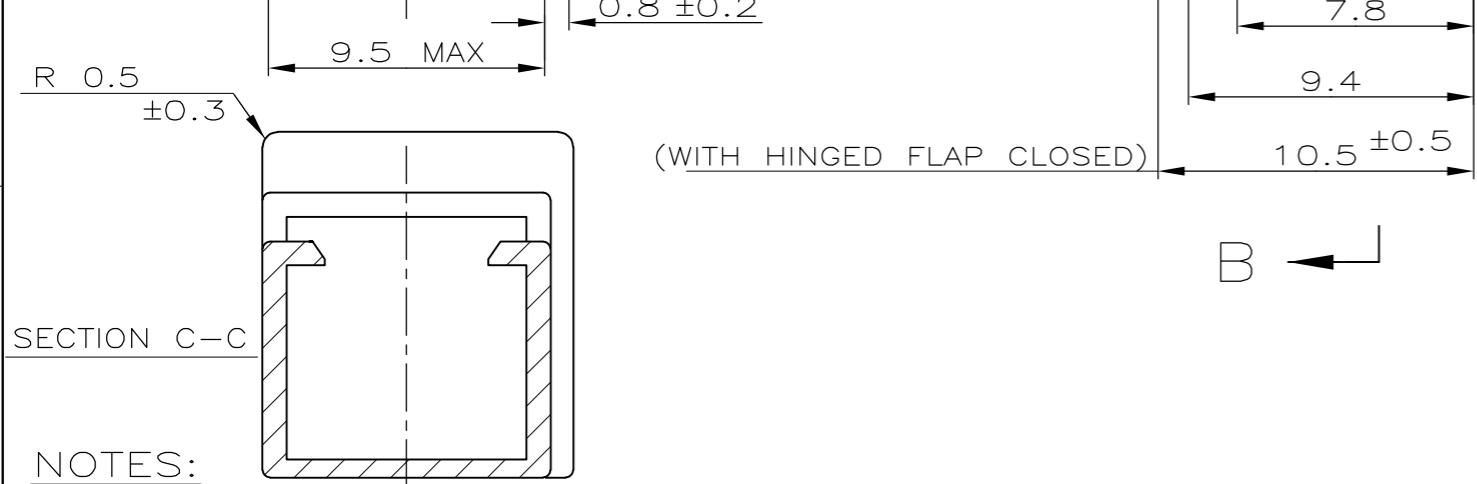
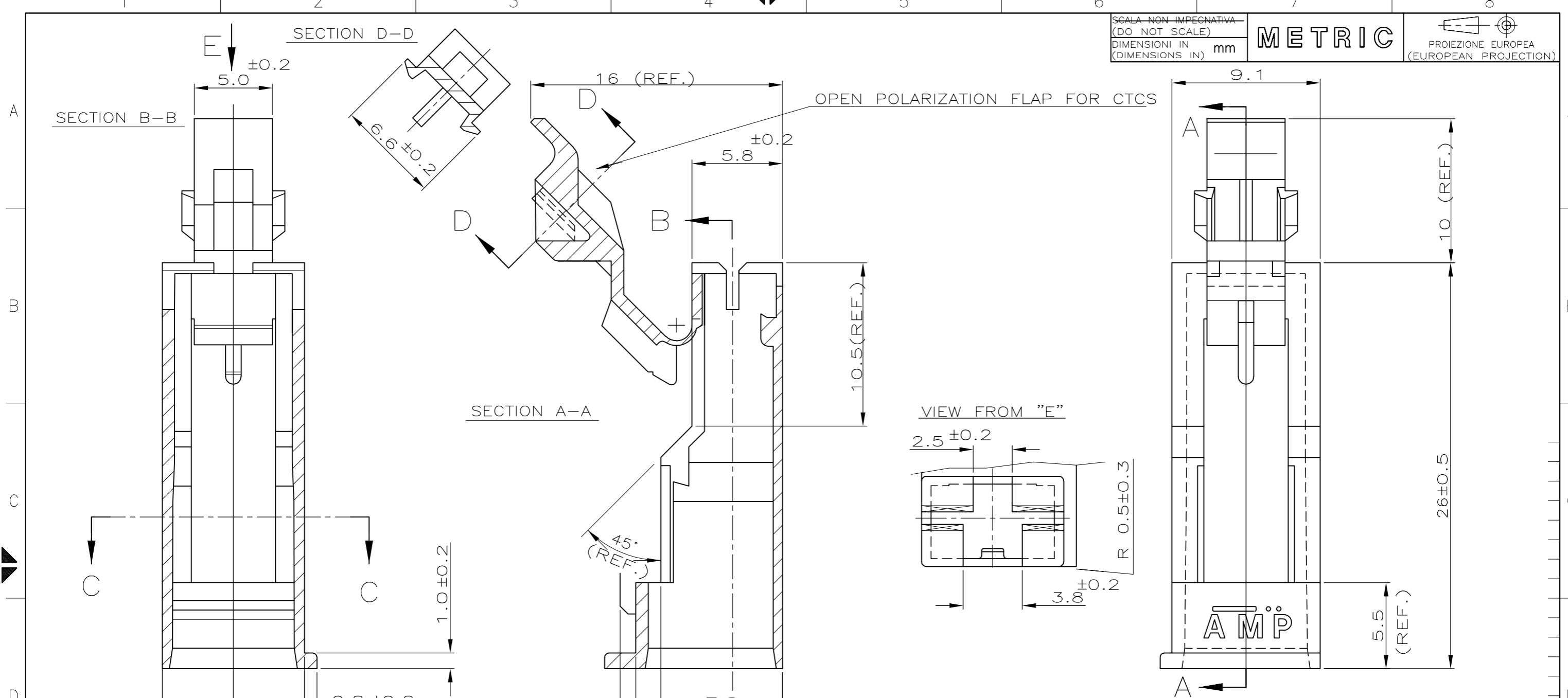
## Contact us

Tel: +86-755-8981 8866 Fax: +86-755-8427 6832

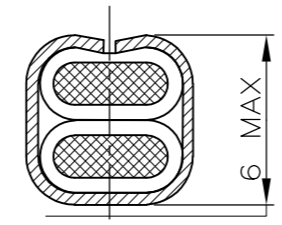
Email & Skype: info@chipsmall.com Web: www.chipsmall.com

Address: A1208, Overseas Decoration Building, #122 Zhenhua RD., Futian, Shenzhen, China





- NOTES:**
- HOUSING FOR CTCS "AMP POSITIVE LOCK MKI WITH ANTIOVERSTRESS" PN.281827-281828-281829-282162
  - HOUSING FOR CONTACT P/N 282553-1 WITH 2 CABLES 2.5mm WIRE SIZE (INSULATION DIA.3.8)
  - OBsolete PARTS: OBSOLETE CIS STREAMLINING PER D.RENAUD/D.SINISI



SEE NOTE 2)	-----	BROWN	POLIAMMIDE 6/6	△ 281991-4
SEE NOTE 1)	-----	RED		△ 281991-3
SEE NOTE 1)	1/23404/87	BLACK		281991-2
SEE NOTE 1)	1/23404/80	NEUTRAL		281991-1
	NUMERO FIAT (FIAT NUMBER)	FINITURA / COLORE (FINISH / COLOUR)	MATERIALE (MATERIAL)	NUMERO (PART NUMBER)

D1	REV PER ECO-09-021510	KK/AEG	03SEP90	CUSTOMER DWG. FOR REFERENCE ONLY	DISEGNO PER CLIENTE SOLO PER RIFERIMENTO
D	ADDED P/N 281991-4 IN PRODUCTION AS PER EC: ET00-0184-93	C.I.	1993 19-10		
C	ADDED P/N 281991-3	C.I.	1992	THIS DRAWING IS UNPUBLISHED RESERVED. AMP PRODUCTS MAY BE COVERED BY U.S. AND FOREIGN PATENT AND/OR PATENT PENDING	
B	MODIFIED SECTION C-C ADDED VIEW FROM "E" DWG.UPDATED:MODIF.SECT.D-D	C.I.	1992	TOLLERANZE: SE NON DIVERSAMENTE SPECIFICATO	DIAM. ISOLANTE (INS. DIA. RANGE)
A	IN PRODUCTION	C.I.	1990	(TOLERANCES: UNLESS OTHERWISE SPECIFIED)	RANGO FILO (WIRE RANGE)
6	UP TO DATE	C.I.	1990	± 0.3	SCALA (SCALE)
5	UP TO DATE	C.I.	1990	ANGOLI (ANGLES)	4:1
4	UP TO DATE	O.C.	1989	DIS. 16/3/89 (DR.) O.CANUTO	DESCRIZIONE (DESCRIPTION) 1 WAY HOUSING FOR POSITIVE LOCK ANTIOVERSTRESS CTCS.
3	REDRAWN WAS P/N 89-51030	O.C.	1989	CONT.1 JUNE 1990 (CHK) C.TARTARI	
2	UP TO DATE	O.C.	1989	APP. (APP.)	LOC.SIZE
1	UP TO DATE	O.C.	1989	DIS. DATA	NUMERO (DWG NO)
REV. (REV. LTR.)	REVISIONI (REVISION RECORD)	DIS. (DR)	DATA (DATE)	APP. (APP.)	REV. FOGLIO (SHEET)
				1 A3 C-281991	D1 1 (OF) 1