



Chipsmall Limited consists of a professional team with an average of over 10 year of expertise in the distribution of electronic components. Based in Hongkong, we have already established firm and mutual-benefit business relationships with customers from,Europe,America and south Asia,supplying obsolete and hard-to-find components to meet their specific needs.

With the principle of “Quality Parts,Customers Priority,Honest Operation,and Considerate Service”,our business mainly focus on the distribution of electronic components. Line cards we deal with include Microchip,ALPS,ROHM,Xilinx,Pulse,ON,Everlight and Freescale. Main products comprise IC,Modules,Potentiometer,IC Socket,Relay,Connector.Our parts cover such applications as commercial,industrial, and automotives areas.

We are looking forward to setting up business relationship with you and hope to provide you with the best service and solution. Let us make a better world for our industry!



Contact us

Tel: +86-755-8981 8866 Fax: +86-755-8427 6832

Email & Skype: info@chipsmall.com Web: www.chipsmall.com

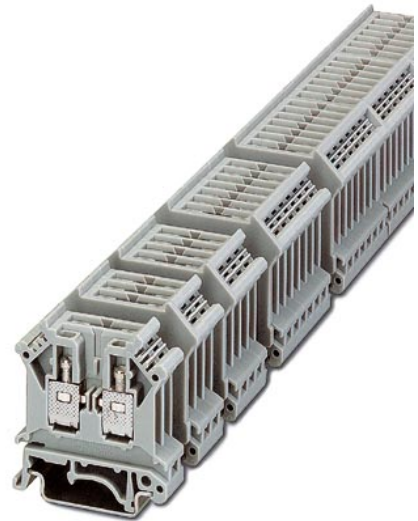
Address: A1208, Overseas Decoration Building, #122 Zhenhua RD., Futian, Shenzhen, China



URELG 7

Order No.: 2820178

The illustration shows versions with a different no. of positions

<http://eshop.phoenixcontact.de/phoenix/treeViewClick.do?UID=2820178>

Basic termination blocks with screw connection for NS 32 and NS 35/7.5 DIN rail, with end cover, for ST-REL..., ST-OV... and ST-OE... plugs, 7-pos.

Commercial data

| | |
|--------------------------|-------------------|
| EAN | 4017918076801 |
| Pack | 10 pcs. |
| Customs tariff | 85369010 |
| Weight/Piece | 0.0742 KG |
| Catalog page information | Page 95 (IF-2005) |

Product notes

WEEE/RoHS-compliant since:
01/01/2003

<http://www.download.phoenixcontact.com>
Please note that the data given here has been taken from the online catalog. For comprehensive information and data, please refer to the user documentation. The General Terms and Conditions of Use apply to Internet downloads.

Technical data

General data

| | |
|---------------------|---|
| Number of positions | 7 |
|---------------------|---|

| | |
|-------------------------------------|--|
| Nominal voltage U_N | 400 V (voltage is determined by the coupling connector.) |
| Nominal current I_N | 16 A (current is determined by the coupling connector.) |
| Color | gray |
| Insulating material | PA |
| Depth | 42.5 mm |
| Width with lid | 45.6 mm |
| Height with coupling plug NS 35/7,5 | 112 mm |

Connection data

| | |
|--|---------------------|
| Conductor cross section solid min. | 0.2 mm ² |
| Conductor cross section solid max. | 4 mm ² |
| Conductor cross section stranded min. | 0.2 mm ² |
| Conductor cross section stranded max. | 4 mm ² |
| Conductor cross section AWG/kcmil min. | 24 |
| Conductor cross section AWG/kcmil max | 12 |
| Type of connection | Screw connection |
| Stripping length | 9 mm |
| Screw thread | M3 |

Certificates / Approvals



Certification DNV, GOST

Accessories

| Item | Designation | Description |
|------|-------------|-------------|
|------|-------------|-------------|

Assembly

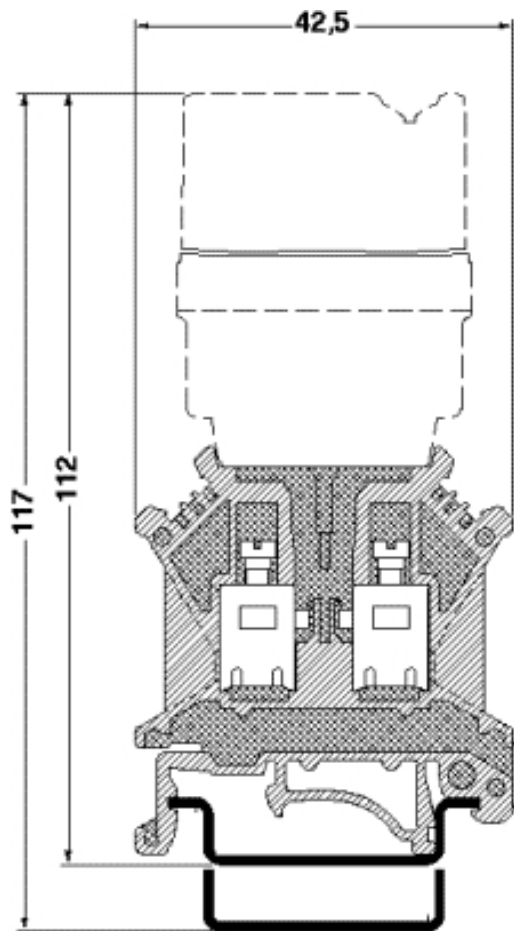
| | | |
|---------|------|--|
| 1201442 | E/UK | End clamp, for assembly on NS 32 or NS 35/7,5 DIN rail |
|---------|------|--|

Bridges

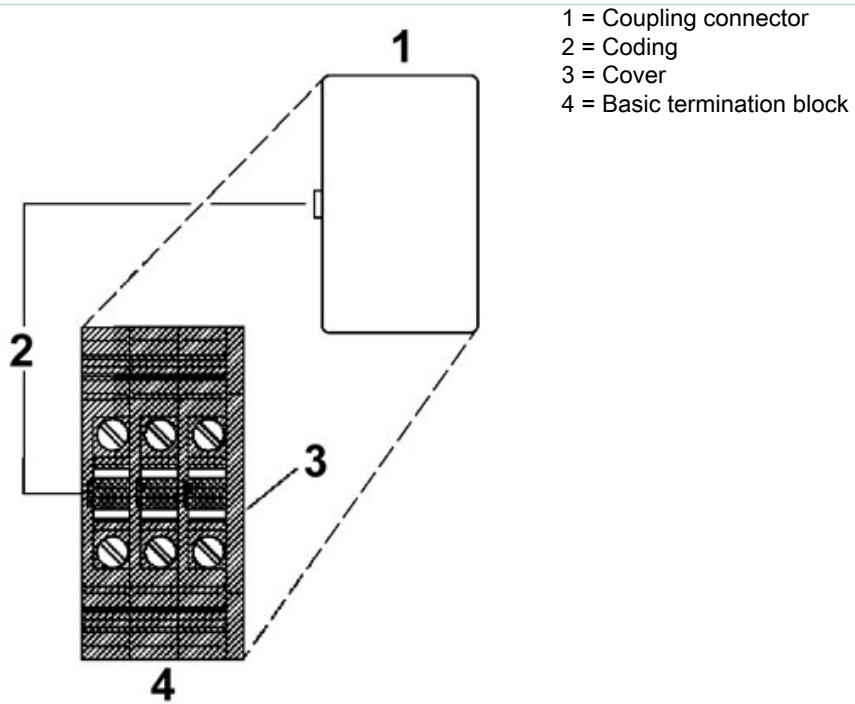
| | | |
|---------|--------------|---------------------------|
| 2820916 | DB 50- 90 BK | Wire bridge, Color: black |
| 2821180 | DB 50- 90 BU | Wire bridge, Color: blue |
| 2820929 | DB 50- 90 GY | Wire bridge, Color: gray |

Diagrams/Drawings

Dimensioned drawing



Schematic diagram



Address

PHOENIX CONTACT Inc., USA
586 Fulling Mill Road
Middletown, PA 17057, USA
Phone (800) 888-7388
Fax (717) 944-1625
<http://www.phoenixcon.com>



© 2010 Phoenix Contact
Technical modifications reserved;