



Chipsmall Limited consists of a professional team with an average of over 10 year of expertise in the distribution of electronic components. Based in Hongkong, we have already established firm and mutual-benefit business relationships with customers from,Europe,America and south Asia,supplying obsolete and hard-to-find components to meet their specific needs.

With the principle of “Quality Parts,Customers Priority,Honest Operation,and Considerate Service”,our business mainly focus on the distribution of electronic components. Line cards we deal with include Microchip,ALPS,ROHM,Xilinx,Pulse,ON,Everlight and Freescale. Main products comprise IC,Modules,Potentiometer,IC Socket,Relay,Connector.Our parts cover such applications as commercial,industrial, and automotives areas.

We are looking forward to setting up business relationship with you and hope to provide you with the best service and solution. Let us make a better world for our industry!



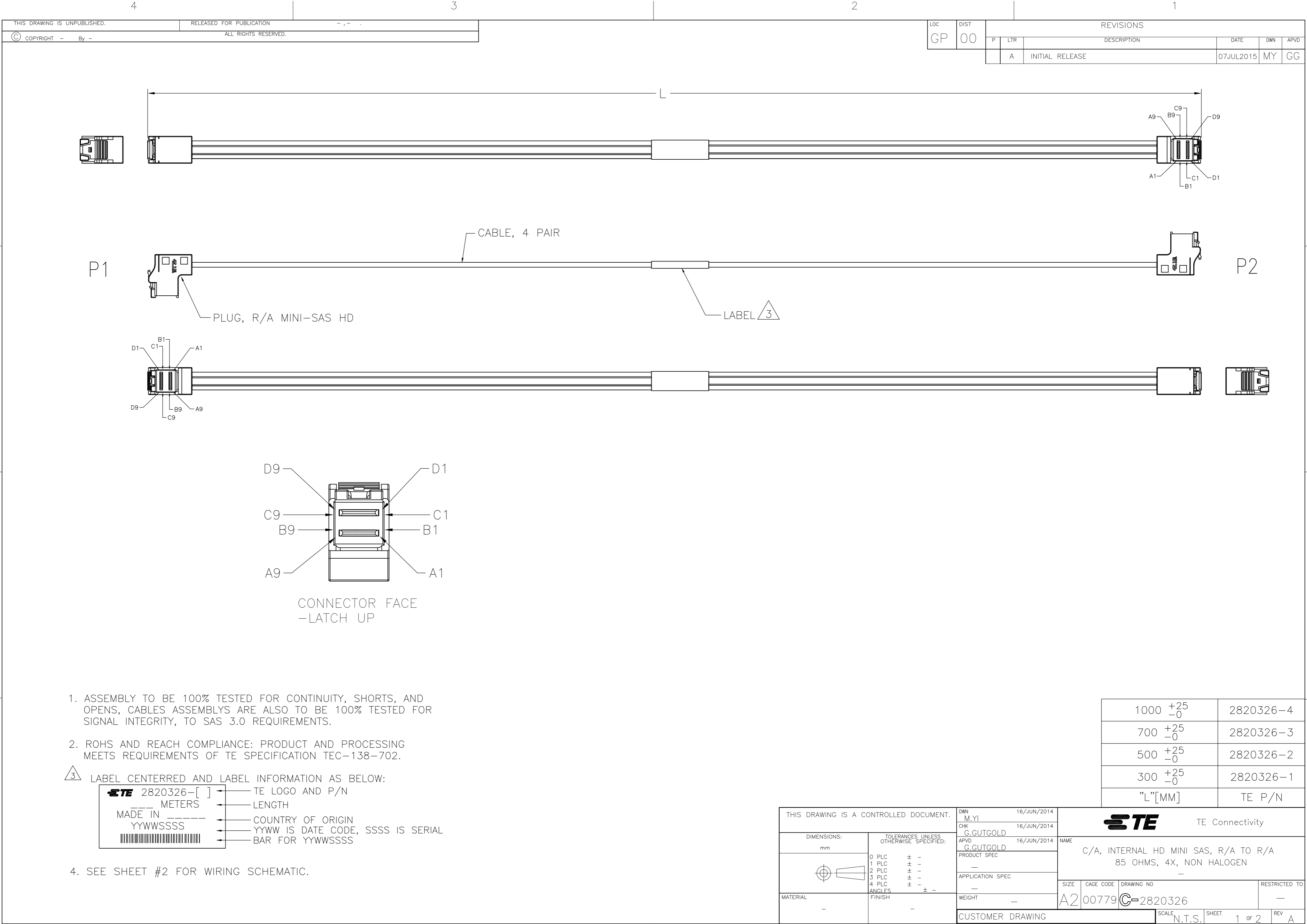
## Contact us

Tel: +86-755-8981 8866 Fax: +86-755-8427 6832

Email & Skype: [info@chipsmall.com](mailto:info@chipsmall.com) Web: [www.chipsmall.com](http://www.chipsmall.com)

Address: A1208, Overseas Decoration Building, #122 Zhenhua RD., Futian, Shenzhen, China





LOC	DIST	REVISIONS							
		P	LTR	DESCRIPTION			DATE	DWN	APVD
GP	00		A	INITIAL RELEASE			07JUL2015	MY	GC



- ASSEMBLY TO BE 100% TESTED FOR CONTINUITY, SHORTS, AND OPENS, CABLES ASSEMBLYS ARE ALSO TO BE 100% TESTED FOR SIGNAL INTEGRITY, TO SAS 3.0 REQUIREMENTS.
- ROHS AND REACH COMPLIANCE: PRODUCT AND PROCESSING MEETS REQUIREMENTS OF TE SPECIFICATION TEC-138-702.

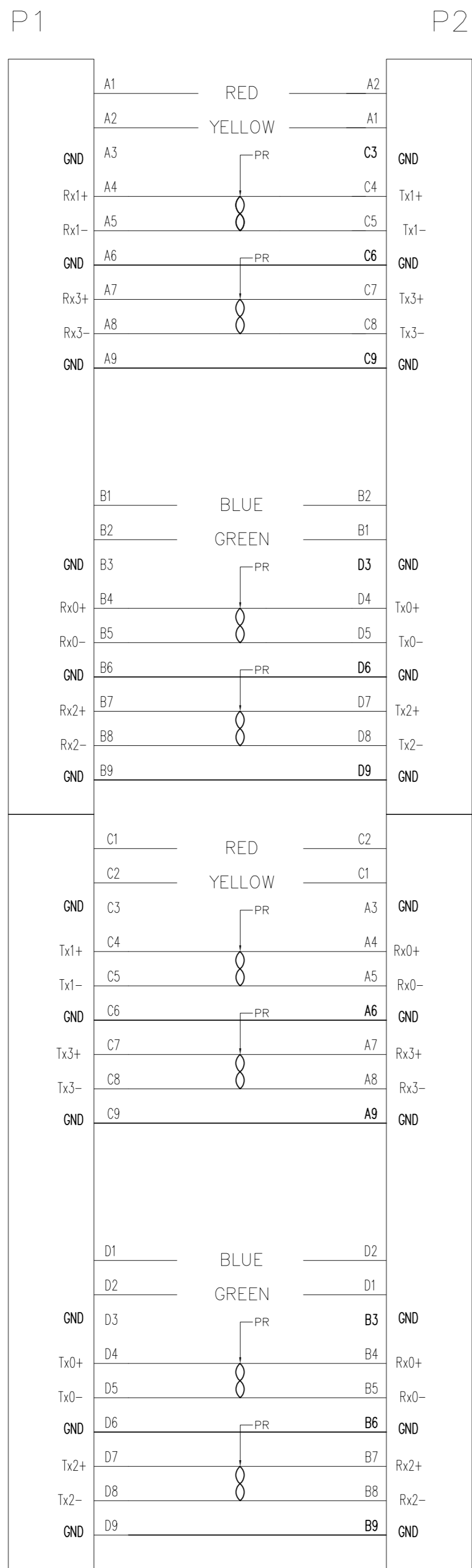
3 LABEL CENTERED AND LABEL INFORMATION AS BELOW:

	2820326-[ ]	TE LOGO AND P/N
----	METERS	LENGTH
MADE IN -----		COUNTRY OF ORIGIN
YYWWSSSS		YYWW IS DATE CODE, SSSS IS SERIAL
		BAR FOR YYWWSSSS



4. SEE SHEET #2 FOR WIRING SCHEMATIC.

1000 $\begin{smallmatrix} +25 \\ -0 \end{smallmatrix}$	2820326-4
700 $\begin{smallmatrix} +25 \\ -0 \end{smallmatrix}$	2820326-3
500 $\begin{smallmatrix} +25 \\ -0 \end{smallmatrix}$	2820326-2
300 $\begin{smallmatrix} +25 \\ -0 \end{smallmatrix}$	2820326-1
"L"[MM]	TE P/N

THIS DRAWING IS A CONTROLLED DOCUMENT.		DWN M.YI 16/JUN/2014		 TE Connectivity			
		CHK G.GUTGOLD 16/JUN/2014					
DIMENSIONS:  mm		TOLERANCES, UNLESS OTHERWISE SPECIFIED:		NAME  C/A, INTERNAL HD MINI SAS, R/A TO R/A 85 OHMS, 4X, NON HALOGEN  —			
		APVD G.GUTGOLD 16/JUN/2014					
		PRODUCT SPEC  —					
		APPLICATION SPEC  —					
		WEIGHT —					
MATERIAL  —		FINISH  —		SIZE A2	CAGE CODE 00779	DRAWING NO C=2820326	RESTRICTED TO —
CUSTOMER DRAWING				SCALE N.T.S.	SHEET 1 of 2	REV A	



# WIRING PATTERN

THIS DRAWING IS A CONTROLLED DOCUMENT.		DWN M.YI 16/JUN/2014 CHK G.GUTGOLD 16/JUN/2014 APVD G.GUTGOLD 16/JUN/2014		 TE Connectivity			
DIMENSIONS: mm		TOLERANCES UNLESS OTHERWISE SPECIFIED:		NAME C/A, INTERNAL HD MINI SAS, R/A TO R/A 85 OHMS, 4X, NON HALOGEN			
		0 PLC ± - 1 PLC ± - 2 PLC ± - 3 PLC ± - 4 PLC ± - ANGLES ± -		PRODUCT SPEC - APPLICATION SPEC - WEIGHT -		SIZE A2	
MATERIAL -		FINISH -		CAGE CODE 00779		DRAWING NO C=2820326	
CUSTOMER DRAWING				SCALE N.T.S.		SHEET 2 of 2	
						REV A	