



Chipsmall Limited consists of a professional team with an average of over 10 year of expertise in the distribution of electronic components. Based in Hongkong, we have already established firm and mutual-benefit business relationships with customers from,Europe,America and south Asia,supplying obsolete and hard-to-find components to meet their specific needs.

With the principle of “Quality Parts,Customers Priority,Honest Operation,and Considerate Service”,our business mainly focus on the distribution of electronic components. Line cards we deal with include Microchip,ALPS,ROHM,Xilinx,Pulse,ON,Everlight and Freescale. Main products comprise IC,Modules,Potentiometer,IC Socket,Relay,Connector.Our parts cover such applications as commercial,industrial, and automotives areas.

We are looking forward to setting up business relationship with you and hope to provide you with the best service and solution. Let us make a better world for our industry!



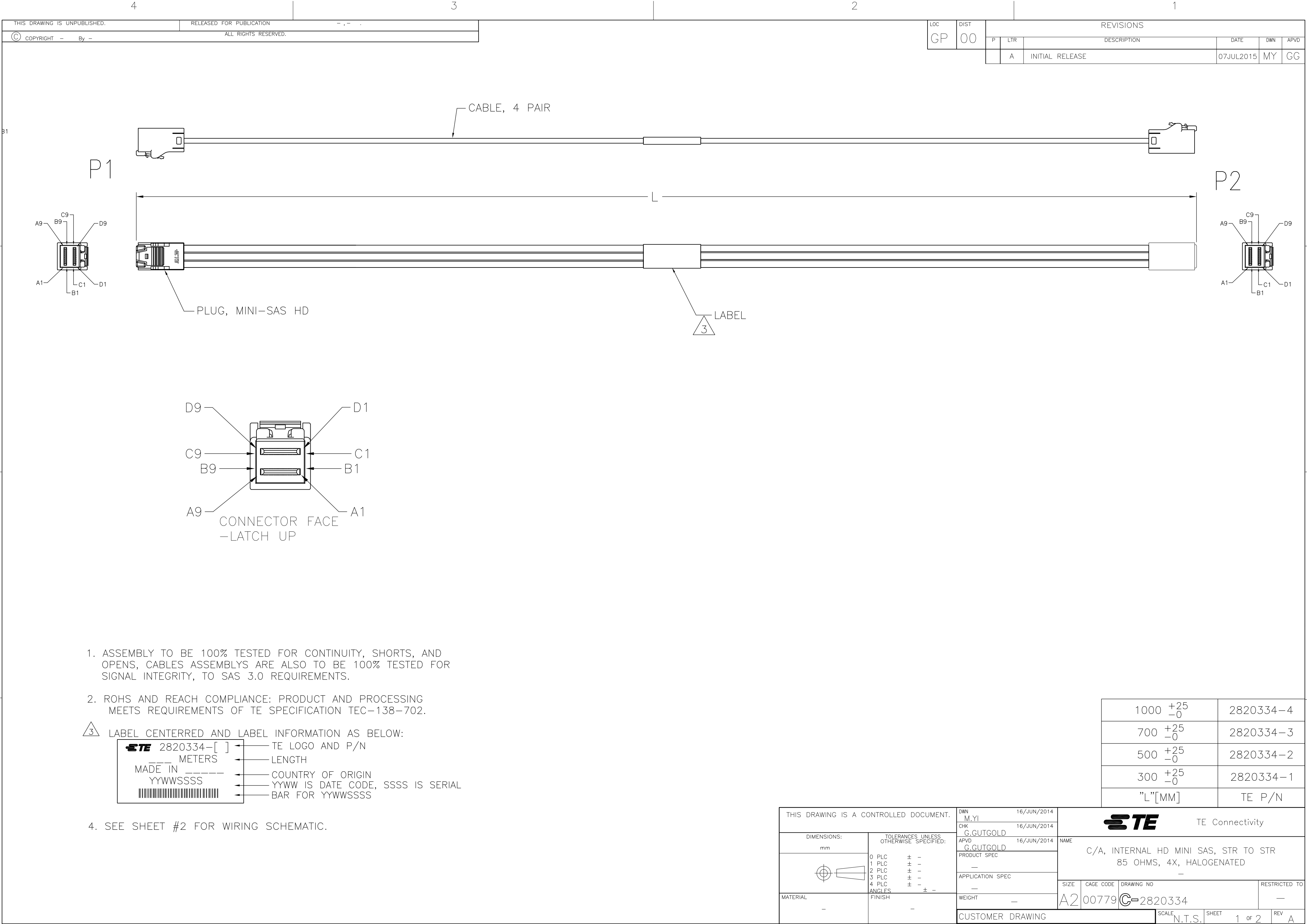
Contact us

Tel: +86-755-8981 8866 Fax: +86-755-8427 6832

Email & Skype: info@chipsmall.com Web: www.chipsmall.com

Address: A1208, Overseas Decoration Building, #122 Zhenhua RD., Futian, Shenzhen, China





1. ASSEMBLY TO BE 100% TESTED FOR CONTINUITY, SHORTS, AND OPENS, CABLES ASSEMBLYS ARE ALSO TO BE 100% TESTED FOR SIGNAL INTEGRITY, TO SAS 3.0 REQUIREMENTS.
2. ROHS AND REACH COMPLIANCE: PRODUCT AND PROCESSING MEETS REQUIREMENTS OF TE SPECIFICATION TEC-138-702.

3

LABEL CENTERED AND LABEL INFORMATION AS BELOW:

STE

2820334-[]

METERS

MADE IN

YYWWSSSS

TE LOGO AND P/N

LENGTH


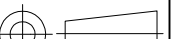
COUNTRY OF ORIGIN

YYWW IS DATE CODE, SSSS IS SERIAL

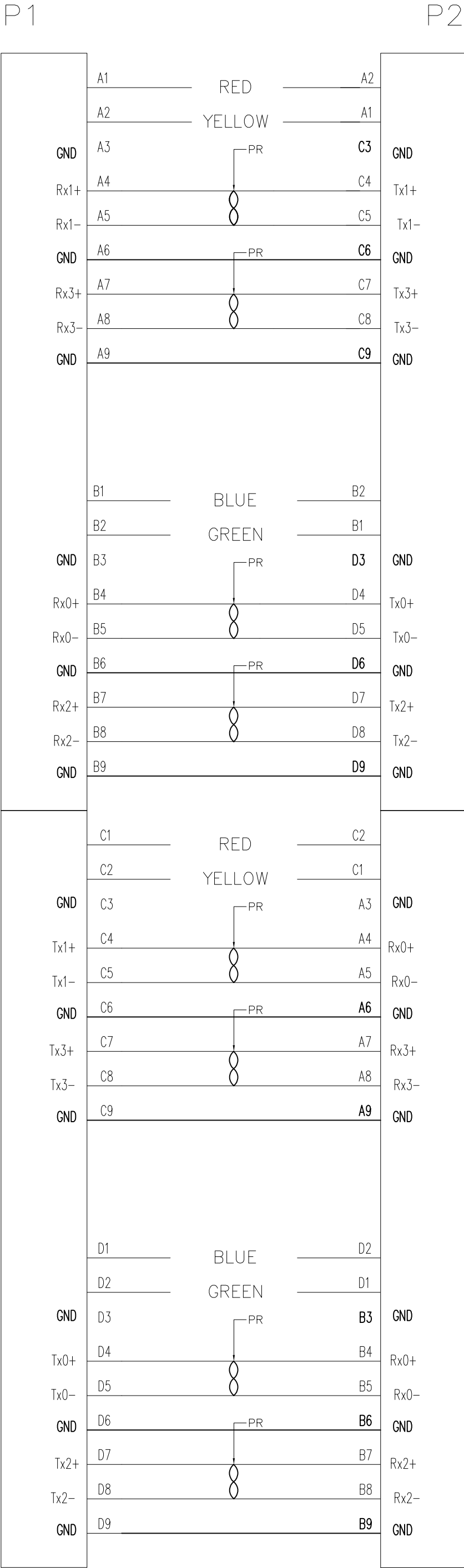
BAR FOR YYWWSSSS

4. SEE SHEET #2 FOR WIRING SCHEMATIC.


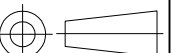
1000 $\begin{smallmatrix} +25 \\ -0 \end{smallmatrix}$	2820334-4
700 $\begin{smallmatrix} +25 \\ -0 \end{smallmatrix}$	2820334-3
500 $\begin{smallmatrix} +25 \\ -0 \end{smallmatrix}$	2820334-2
300 $\begin{smallmatrix} +25 \\ -0 \end{smallmatrix}$	2820334-1
"L"[MM]	TE P/N

THIS DRAWING IS A CONTROLLED DOCUMENT.		DWN M.YI 16/JUN/2014		 TE Connectivity			
		CHK G.GUTGOLD 16/JUN/2014					
DIMENSIONS: mm		TOLERANCES UNLESS OTHERWISE SPECIFIED:		NAME C/A, INTERNAL HD MINI SAS, STR TO STR 85 OHMS, 4X, HALOGENATED —			
		APVD G.GUTGOLD 16/JUN/2014					
		PRODUCT SPEC —					
		APPLICATION SPEC —					
MATERIAL —		FINISH —		SIZE A2	CAGE CODE 00779	DRAWING NO C=2820334	RESTRICTED TO —
CUSTOMER DRAWING				SCALE N.T.S.	SHEET 1 of 2	REV A	

LOC	DIST	REVISIONS				
GP	00	P	LTR	DESCRIPTION	DATE	DWN
		-	-	SEE SHEET 1	-	-



WIRING PATTERN

THIS DRAWING IS A CONTROLLED DOCUMENT.		DWN M.YI 16/JUN/2014		 TE Connectivity			
		CHK G.GUTGOLD 16/JUN/2014					
DIMENSIONS: mm		TOLERANCES UNLESS OTHERWISE SPECIFIED:		NAME C/A, INTERNAL HD MINI SAS, STR TO STR 85 OHMS, 4X, HALOGENATED —			
		APVD G.GUTGOLD 16/JUN/2014					
		PRODUCT SPEC —					
		APPLICATION SPEC —					
		WEIGHT —					
MATERIAL —		FINISH —		SIZE A2	CAGE CODE 00779	DRAWING NO C=2820334	RESTRICTED TO —
CUSTOMER DRAWING				SCALE N.T.S.	SHEET 2 of 2	REV A	