



Chipsmall Limited consists of a professional team with an average of over 10 year of expertise in the distribution of electronic components. Based in Hongkong, we have already established firm and mutual-benefit business relationships with customers from,Europe,America and south Asia,supplying obsolete and hard-to-find components to meet their specific needs.

With the principle of “Quality Parts,Customers Priority,Honest Operation,and Considerate Service”,our business mainly focus on the distribution of electronic components. Line cards we deal with include Microchip,ALPS,ROHM,Xilinx,Pulse,ON,Everlight and Freescale. Main products comprise IC,Modules,Potentiometer,IC Socket,Relay,Connector.Our parts cover such applications as commercial,industrial, and automotives areas.

We are looking forward to setting up business relationship with you and hope to provide you with the best service and solution. Let us make a better world for our industry!



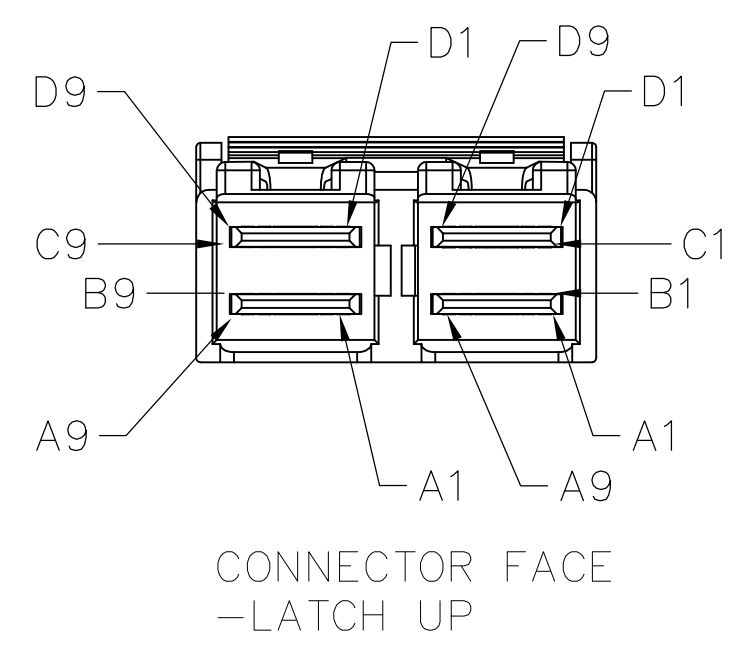
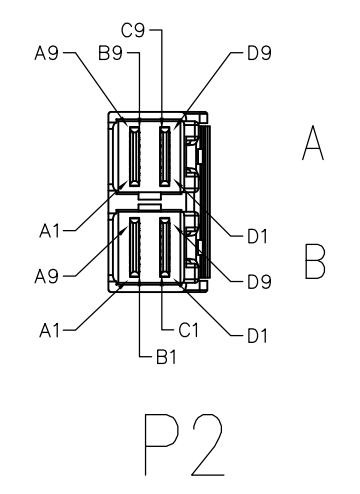
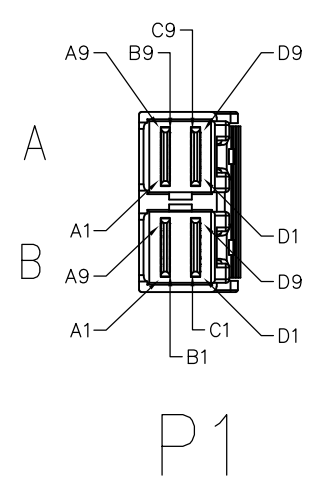
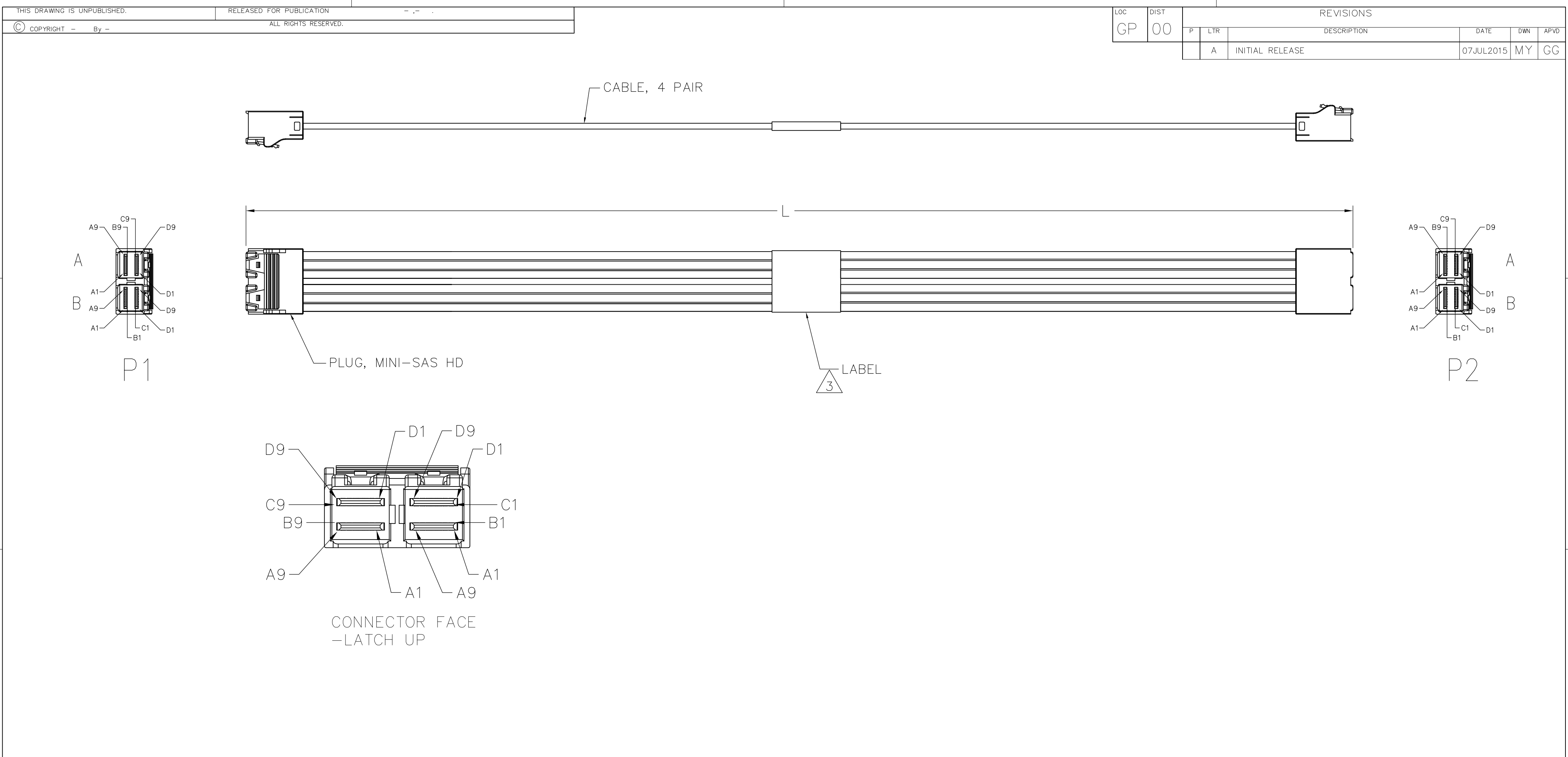
## Contact us

Tel: +86-755-8981 8866 Fax: +86-755-8427 6832

Email & Skype: [info@chipsmall.com](mailto:info@chipsmall.com) Web: [www.chipsmall.com](http://www.chipsmall.com)

Address: A1208, Overseas Decoration Building, #122 Zhenhua RD., Futian, Shenzhen, China





1. ASSEMBLY TO BE 100% TESTED FOR CONTINUITY, SHORTS, AND OPENS, CABLES ASSEMBLYS ARE ALSO TO BE 100% TESTED FOR SIGNAL INTEGRITY, TO SAS 3.0 REQUIREMENTS.
2. ROHS AND REACH COMPLIANCE: PRODUCT AND PROCESSING MEETS REQUIREMENTS OF TE SPECIFICATION TEC-138-702.

3 LABEL CENTERED AND LABEL INFORMATION AS BELOW:

|          |             |                                   |
|----------|-------------|-----------------------------------|
|          | 2820338-[ ] | TE LOGO AND P/N                   |
|          | METERS      | LENGTH                            |
| MADE IN  |             | COUNTRY OF ORIGIN                 |
| YYWWSSSS |             | YYWW IS DATE CODE, SSSS IS SERIAL |
|          |             | BAR FOR YYWWSSSS                  |

4. SEE SHEET #2 FOR WIRING SCHEMATIC.

|               |           |
|---------------|-----------|
| 500 +25<br>-0 | 2820338-2 |
| 300 +25<br>-0 | 2820338-1 |
| "L"[MM]       | TE P/N    |

|  |  |                   |             |                                       |  |
|--|--|-------------------|-------------|---------------------------------------|--|
| THIS DRAWING IS A CONTROLLED DOCUMENT. |  | DWN<br>M.YI       | 16/JUN/2014 | TE Connectivity                       |  |
| DIMENSIONS:<br>mm                      |  | CHK<br>G.GUTGOLD  | 16/JUN/2014 |                                       |  |
| TOLERANCES UNLESS OTHERWISE SPECIFIED: |  | APVD<br>G.GUTGOLD | 16/JUN/2014 | NAME                                  |  |
| 0 PLC ± -                              |  | PRODUCT SPEC      |             | C/A, INTERNAL HD MINI SAS, STR TO STR |  |
| 1 PLC ± -                              |  | APPLICATION SPEC  |             | 100 OHMS, 8X, NON HALOGEN             |  |
| 2 PLC ± -                              |  | WEIGHT            |             | -                                     |  |
| 3 PLC ± -                              |  | CUSTOMER DRAWING  |             | -                                     |  |
| 4 PLC ± -                              |  | SCALE             |             | N.T.S.                                |  |
| ANGLES ± -                             |  | SHEET             |             | 1 of 2                                |  |
| FINISH                                 |  | REV               |             | A                                     |  |

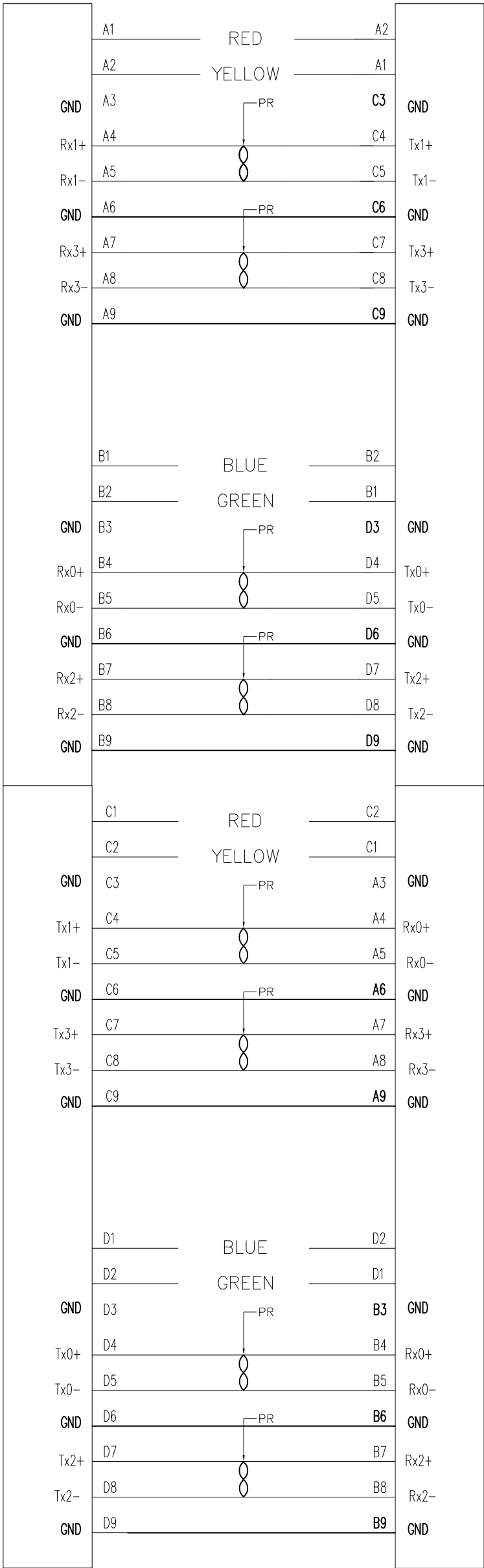
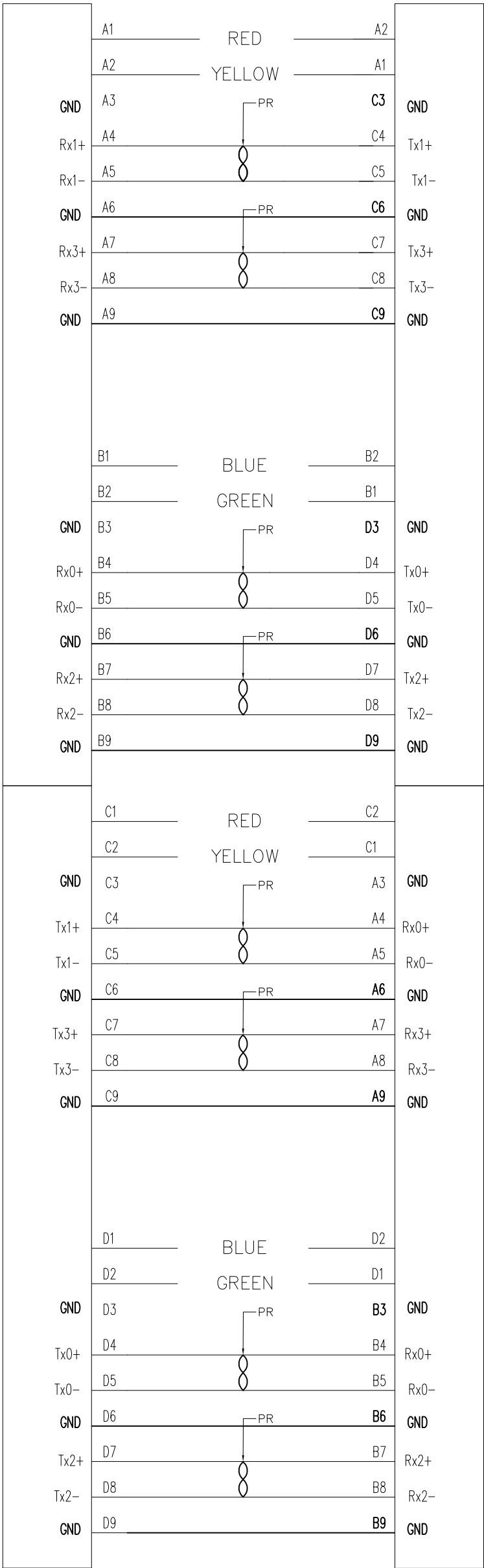
| LOC | DIST | REVISIONS |     |             |      |     |      |
|-----|------|-----------|-----|-------------|------|-----|------|
|     |      | P         | LTR | DESCRIPTION | DATE | DWN | APVD |
| GP  | 00   |           |     |             |      |     |      |
|     |      |           | —   | SEE SHEET 1 | —    | —   | —    |

P1-A

P2-A

P1-B

P2-B



WIRING PATTERN

|  |  |                   |             |  |           |            |               |
|--|--|-------------------|-------------|--|-----------|------------|---------------|
| THIS DRAWING IS A CONTROLLED DOCUMENT. |  | DWN<br>M.YI       | 16/JUN/2014 | TE Connectivity  |           |            |               |
|  |  | CHK<br>G.GUTGOLD  | 16/JUN/2014 |  |           |            |               |
|  |  | APVD<br>G.GUTGOLD | 16/JUN/2014 | NAME   |           |            |               |
|  |  | PRODUCT SPEC      |             | C/A, INTERNAL HD MINI SAS, STR TO STR<br>100 OHMS, 8X, NON HALOGEN |           |            |               |
|  |  | APPLICATION SPEC  |             | -  |           |            |               |
|  |  | WEIGHT            |             | SIZE   | CAGE CODE | DRAWING NO | RESTRICTED TO |
|  |  | -                 |             | A2   | 00779     | C=2820338  | -             |
|  |  | CUSTOMER DRAWING  |             | SCALE  | N.T.S.    | SHEET      | 2 of 2        |
|  |  |                   |             |  |           | REV        | A             |