



Chipsmall Limited consists of a professional team with an average of over 10 year of expertise in the distribution of electronic components. Based in Hongkong, we have already established firm and mutual-benefit business relationships with customers from,Europe,America and south Asia,supplying obsolete and hard-to-find components to meet their specific needs.

With the principle of “Quality Parts,Customers Priority,Honest Operation,and Considerate Service”,our business mainly focus on the distribution of electronic components. Line cards we deal with include Microchip,ALPS,ROHM,Xilinx,Pulse,ON,Everlight and Freescale. Main products comprise IC,Modules,Potentiometer,IC Socket,Relay,Connector.Our parts cover such applications as commercial,industrial, and automotives areas.

We are looking forward to setting up business relationship with you and hope to provide you with the best service and solution. Let us make a better world for our industry!



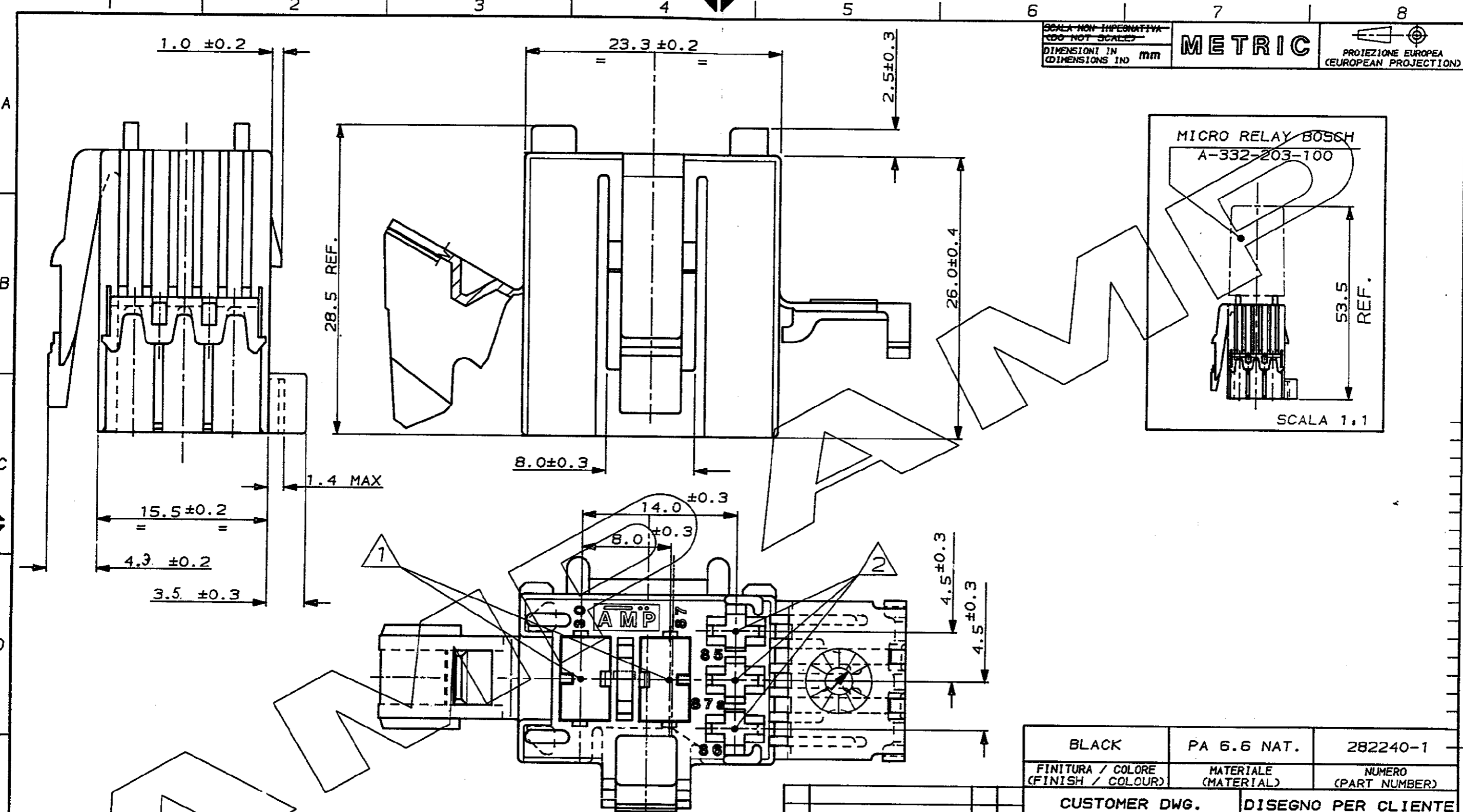
## Contact us

Tel: +86-755-8981 8866 Fax: +86-755-8427 6832

Email & Skype: info@chipsmall.com Web: www.chipsmall.com

Address: A1208, Overseas Decoration Building, #122 Zhenhua RD., Futian, Shenzhen, China





**NOTES**

- ① N.2 CAVITIES SUITABLE FOR POSITIVE LOCK MKI CONTACTS SRS. .250".
- ② N.3 CAVITIES SUITABLE FOR JUNIOR POWER TIMER CONTACTS

REV.	REVISIONI REVISION RECORD	DIS. DATE	DATA DATE
3	WAS 23.1±0.2 (I-3155)	C.I.	23-11-1992
B	DIMENSION 23.3±0.2	C.I.	20-JAN-1992
A	IN PRODUCTION (I-2992)	C.I.	22-NOV-1991
3	REVISED	C.I.	1991
2	REVISED	C.I.	1991
1	WAS P/N 90-S1162	C.I.	1991

BLACK	PA 6.6 NAT.	282240-1
FINITURA / COLORE (FINISH / COLOUR)	MATERIALE (MATERIAL)	NUMERO (PART NUMBER)
CUSTOMER DWG. FOR REFERENCE ONLY		DISEGNO PER CLIENTE SOLO PER RIFERIMENTO
THIS DRAWING IS UNPUBLISHED		RELEASE FOR PUBLICATION
© COPYRIGHT 19 BY AMP INCORPORATED, HARRISBURG, PA. ALL INTERNATIONAL RIGHT RESERVED. AMP PRODUCTS MAY BE COVERED BY U.S. AND FOREIGN PATENT AND/OR PATENT PENDING		
TOLLERANZE, SE NON DIVERSAMENTE SPECIFICATO (TOLERANCES, UNLESS OTHERWISE SPECIFIED)	DIAM. ISOLANTE CINS. DIA. RANGE	RANGO FILO WIRE RANGE
± 0.3	//	//
ANGOLI CAMELSD ± 2°	SCALA (SCALE) 3:1	
<b>AMP</b> AMP ITALIA S.p.A. Corso F.lli Cervi, 15 COLLENO (TORINO)		
DESCRIZIONE (DESCRIPTION) 5 POSITIONS MICRO-RELAY HSG FOR TRUCK		
LOC.	SIZE	NUMERO (DRAWING NO)
I	A3	C-282240
REV.	FOGLIO (SHEET)	
B	1 DI 1	

90-005