



Chipsmall Limited consists of a professional team with an average of over 10 year of expertise in the distribution of electronic components. Based in Hongkong, we have already established firm and mutual-benefit business relationships with customers from,Europe,America and south Asia,supplying obsolete and hard-to-find components to meet their specific needs.

With the principle of “Quality Parts,Customers Priority,Honest Operation,and Considerate Service”,our business mainly focus on the distribution of electronic components. Line cards we deal with include Microchip,ALPS,ROHM,Xilinx,Pulse,ON,Everlight and Freescale. Main products comprise IC,Modules,Potentiometer,IC Socket,Relay,Connector.Our parts cover such applications as commercial,industrial, and automotives areas.

We are looking forward to setting up business relationship with you and hope to provide you with the best service and solution. Let us make a better world for our industry!



Contact us

Tel: +86-755-8981 8866 Fax: +86-755-8427 6832

Email & Skype: info@chipsmall.com Web: www.chipsmall.com

Address: A1208, Overseas Decoration Building, #122 Zhenhua RD., Futian, Shenzhen, China



THIS DRAWING IS UNPUBLISHED.

RELEASED FOR PUBLICATION JAN ,2016.

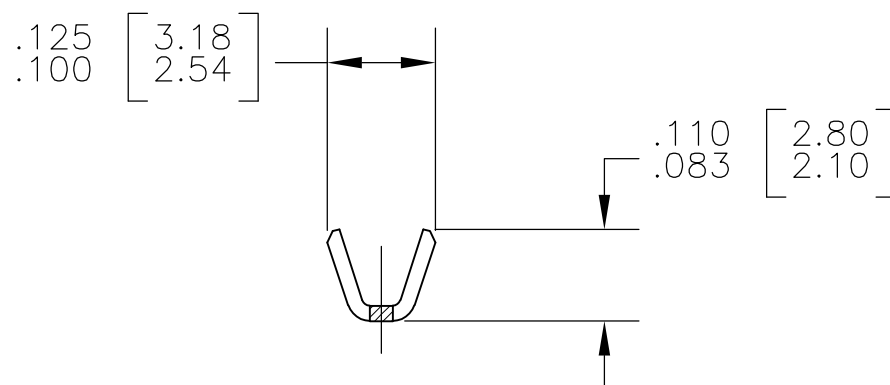
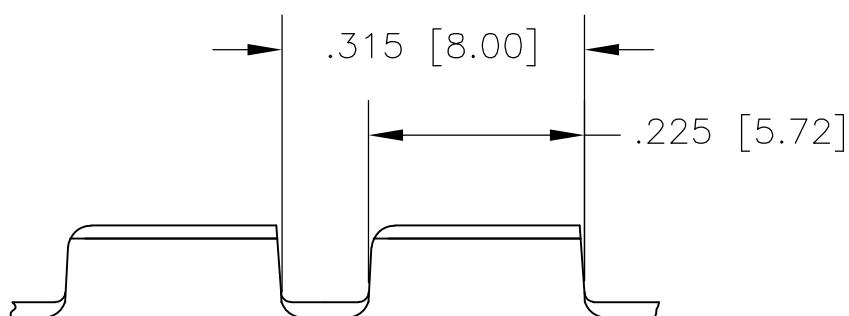
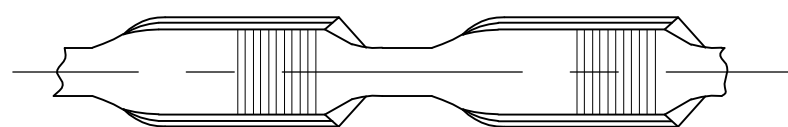
© COPYRIGHT 2015 By TE CONNECTIVITY

ALL RIGHTS RESERVED.


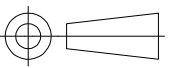
REVISIONS

P	LTR	DESCRIPTION	DATE	DWN	APVD
	A	RELEASED	13JUL2016	PKS	RRP

- 1 PRODUCT SUPPLIED IN STRIP FORM ON REELS
BREAKS MAY BE PRESENT
- 2 DIMENSIONS IN BRACKETS ARE IN MM
- 3 CMA RANGE: 400-1500
- 4 CRIMP WIDTH: .080 F(AMPLIVAR TYPE)
CRIMP HEIGHT (± 0.002) = (TOTAL CMA +5320)/139,200
GENERAL APPLICATION GUIDELINES MUST BE FOLLOWED AS SPECIFIED IN CATALOG #
FOR APPLICATOR INFORMATION CALL: 1-800-722-1111
FOR PRODUCT INFORMATION CALL: 1-800-522-6752
- 5 NOT FOR USE WITH COPPER MAGNET WIRE
USE WITH ALUMINUM MAGNET WIRE ONLY IN COMBINATION WITH STRANDED COPPER LEAD WIRE



5	TIN PLATED	.016[0.41] BRASS	2825180-2
No. of Serrations	Finish	Material	Part Number

THIS DRAWING IS A CONTROLLED DOCUMENT.		DWN SENTHIL 28JAN2016	 TE Connectivity		
DIMENSIONS: INCHES		CHK SENTHIL 28JAN2016			
		APVD RAJENDRA 28JAN2016			
TOLERANCES UNLESS OTHERWISE SPECIFIED:		NAME	FINE MAGWIRE SPLICE		
0 PLC ± -	1 PLC ± - 2 PLC ± - 3 PLC ± .005 4 PLC ± - ANGLES ± 2°	PRODUCT SPEC	MINI MAG-MATE SERRATION		
1 PLC ± -		108-64051	-		
2 PLC ± -		APPLICATION SPEC	SIZE	CAGE CODE	DRAWING NO
3 PLC ± .005		MATERIAL	114-64001	A3	00779
4 PLC ± -	FINISH	WEIGHT	RESTRICTED TO		
ANGLES ± 2°	SEE TABLE	0	-		
MATERIAL SEE TABLE		CUSTOMER DRAWING		SCALE 5:1	
FINISH SEE TABLE		SHEET 1 OF 1		REV A	