



Chipsmall Limited consists of a professional team with an average of over 10 year of expertise in the distribution of electronic components. Based in Hongkong, we have already established firm and mutual-benefit business relationships with customers from,Europe,America and south Asia,supplying obsolete and hard-to-find components to meet their specific needs.

With the principle of “Quality Parts,Customers Priority,Honest Operation,and Considerate Service”,our business mainly focus on the distribution of electronic components. Line cards we deal with include Microchip,ALPS,ROHM,Xilinx,Pulse,ON,Everlight and Freescale. Main products comprise IC,Modules,Potentiometer,IC Socket,Relay,Connector.Our parts cover such applications as commercial,industrial, and automotives areas.

We are looking forward to setting up business relationship with you and hope to provide you with the best service and solution. Let us make a better world for our industry!



## Contact us

Tel: +86-755-8981 8866 Fax: +86-755-8427 6832

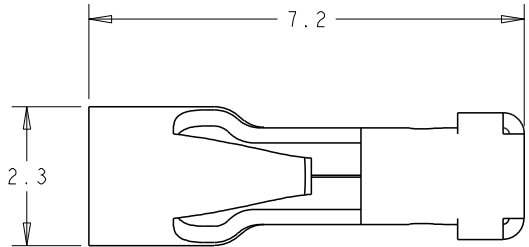
Email & Skype: info@chipsmall.com Web: www.chipsmall.com

Address: A1208, Overseas Decoration Building, #122 Zhenhua RD., Futian, Shenzhen, China



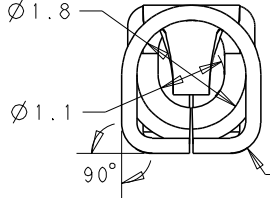
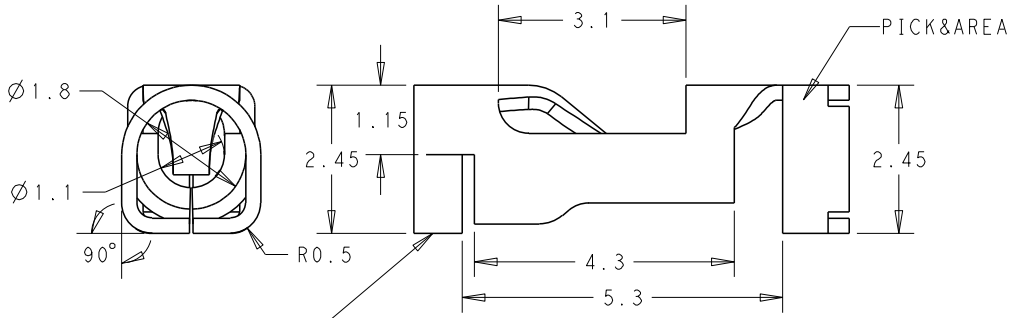
THIS DRAWING IS UNPUBLISHED. RELEASED FOR PUBLICATION 20  
 (C) COPYRIGHT 20 BY - ALL RIGHTS RESERVED.

REVISIONS					
P	LTR	DESCRIPTION	DATE	DWN	APVD
A		ECR-15-012172, RELEASE PRODUCTION VERSION	17AUG2015	GF	SM
A1		ECR-15-012489, UPDATE NOTE DESCRIPTION	24AUG2015	GF	SM

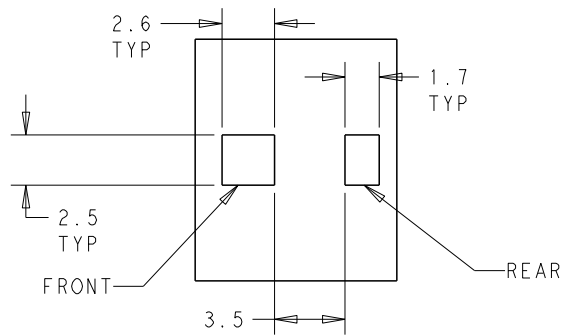


NOTES :

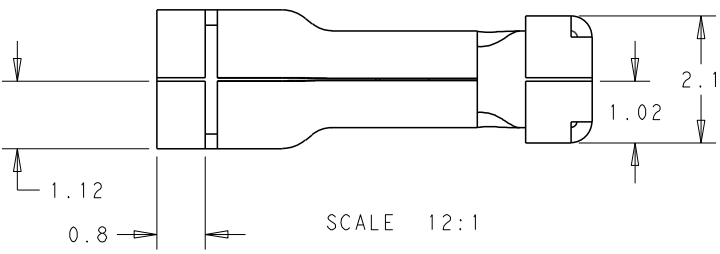
- MATERIALS AND FINISH:  
 - CONTACTS: COPPER ALLOY, FINISH: TIN OVER NICKEL UNDERPLATE
- MUST COMPLY WITH DIRECTIVE 2002/95/EC (ROHS)
- WIRE TYPES AND SIZES ACCEPTED  
 WIRE SIZE: 20AWG SOLID & STRANDED( CONDUCTOR NO:7)  
 22AWG SOLID & STRANDED( CONDUCTOR NO:7)  
 24AWG SOLID  
 TIN-DIPPED FOR ALL STRANDED WIRE  
 MAX INSULATION OD: 1.75mm MAX.  
 STRIP LENGTH: 5.5+/-0.3mm
- PACKAGED IN TAPE AND REEL



FRONT



RECOMMENDED PCB LAYOUT



SCALE 12:1

P/N:2834010-3

THIS DRAWING IS A CONTROLLED DOCUMENT.		DWN	24AUG2015		TE Connectivity
		CHK	24AUG2015		
		APVD	24AUG2015		
		NAME	XU XIANG		
DIMENSIONS: mm		TOLERANCES UNLESS OTHERWISE SPECIFIED:		PRODUCT SPEC	
		0 PLC ±-		108-137049	
		1 PLC ±0.20		APPLICATION SPEC	
		2 PLC ±0.13		114-137049	
		3 PLC ±		WEIGHT	
		4 PLC ±		-	
MATERIAL		FINISH		SIZE	
				A3	
				CAGE CODE	
		DRAWING NO		RESTRICTED TO	
		C=2834010		-	
		CUSTOMER DRAWING		SCALE 12:1 SHEET 1 OF 1 REV A1	